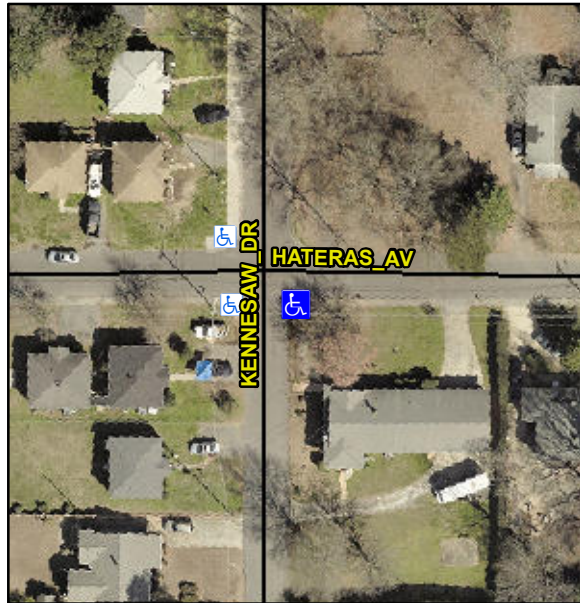


Intersection ID: 8636	Main Street: HATERAS_AV	Cross Street: KENNESAW_DR	Location:	SE
ADA ID: E4025CB24F8D	Ramp Type: Perp	Initial Pass/Fail: Fail	Overall Compliance: No	Severity Score: 50

Codes/Mitigation Info/Possible Solution	Field Measurements/Component Compliance
-----------------------------------------	-----------------------------------------



Possible Solutions:

Remove & Replace Entire Ramp.

Surveyor Notes:

N/A

PROW/ADA:

Not Found, R304.2.2, R304.5.3

Possible Solutions:			Compliance	Description	Data	Compliance	Description	Data		
Remove & Replace Entire Ramp.			N/A	Ramp Length (in)	39.0	No	Ramp Slope (%)	16.1		
			Yes	Ramp Width (in)	72.0	No	Ramp XSlope (%)	9.9		
			N/A	Flare Type LT	N/A	N/A	Flare Type RT	N/A		
			N/A	Flare Slope LT (%)	N/A	N/A	Flare Slope RT (%)	N/A		
			N/A	Flare Traversable LT?	N/A	N/A	Flare Traversable RT?	N/A		
			N/A	Landing Length (in)	N/A	N/A	DWS Provided?	N/A		
			N/A	Landing Width (in)	N/A	N/A	DWS Contrast?	N/A		
			N/A	Landing Slope (%)	N/A	N/A	DWS Length (in)	N/A		
			N/A	Landing X Slope (%)	N/A	N/A	DWS Full Width?	N/A		
			N/A	Landing Curb? (Y/N)	N/A	N/A	DWS Offset (in)	N/A		
Surveyor Notes: N/A			N/A	Shared Landing?	N/A					
			N/A	Gutter Ponding?	N/A	N/A	Gutter Slope (%)	N/A		
			N/A	Gutter Lip Ht (in)	N/A	N/A	Gutter X Slope (%)	N/A		
			N/A	Painted X Walk1?	No	N/A	Painted X Walk2?	N/A		
				X Walk 1 Direction	To W		X Walk 2 Direction	N/A		
			N/A	X Walk 1 Width (in)	N/A	N/A	X Walk 2 Width (in)	N/A		
				X Walk 1 Slope (%)	1.6		X Walk 2 Slope (%)	N/A		
				X Walk 1 X Slope (%)	3.1		X Walk 2 X Slope (%)	N/A		
			N/A	Ramp inside XWalk1?	N/A	N/A	Ramp inside XWalk2?	N/A		
				Road Slope (%)	N/A	N/A	Clear Space?	N/A		
PROW/ADA: Not Found, R304.2.2, R304.5.3				Road X Slope (%)	N/A	N/A	Clear Space to XWalk (in)	N/A		
			N/A	Any Obstructions?	N/A	N/A	Storm Grate/Utility Hazard?	N/A		
				Obstruction Type			Storm Grate/Utility Type			
					N/A			N/A		
						Yes	Surface Condition? (G/P)	Good		
			Total Cost:			\$	1850.00			

Total Cost: \$ 1850.00

