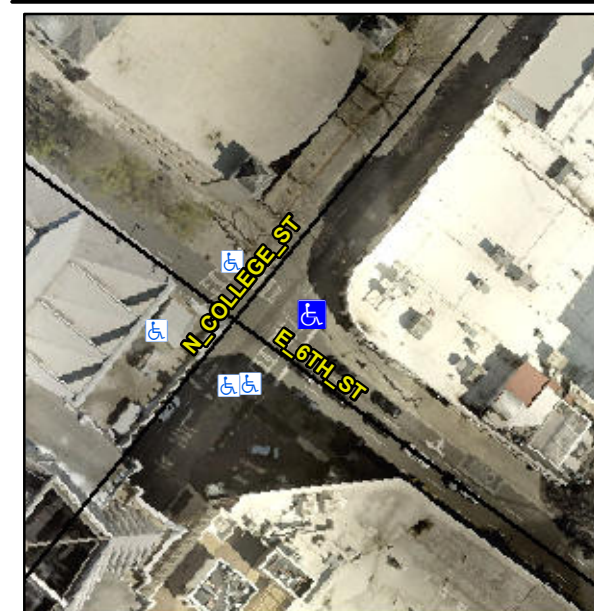


# Access Compliance Report

## Public Rights-of-Way

### (Curb Ramps)

|   |                       |   |                        |
|---|-----------------------|---|------------------------|
| Intersection ID: 12220                  | Main Street: E_6TH_ST | Cross Street: N_COLLEGE_ST              | Location: E            |
| ADA ID: F7CC38EED7B8                    | Ramp Type: PerpDiag   | Initial Pass/Fail: Fail                 | Overall Compliance: No |
| Severity Score: 13.75                   |                       |   |                        |
| Codes/Mitigation Info/Possible Solution |                       | Field Measurements/Component Compliance |                        |



Possible Solutions:

**Remove & Replace Curb Ramp With Two New Directional Ramps or Equivalent. Restripe Crosswalk.**

Surveyor Notes:

**N/A**

PROW/ADA:

**Not Found, R304.2.2**

Total Cost: \$ 3400.00

| Compliance | Description           | Data  | Compliance | Description                 | Data  |
|------------|-----------------------|-------|------------|-----------------------------|-------|
| N/A        | Ramp Length (in)      | 60.0  | No         | Ramp Slope (%)              | 10.1  |
| Yes        | Ramp Width (in)       | 60.0  | Yes        | Ramp XSlope (%)             | 2.1   |
| N/A        | Flare Type LT         | N/A   | N/A        | Flare Type RT               | N/A   |
| N/A        | Flare Slope LT (%)    | N/A   | N/A        | Flare Slope RT (%)          | N/A   |
| N/A        | Flare Traversable LT? | N/A   | N/A        | Flare Traversable RT?       | N/A   |
| N/A        | Landing Length (in)   | N/A   | N/A        | DWS Provided?               | N/A   |
| N/A        | Landing Width (in)    | N/A   | N/A        | DWS Contrast?               | N/A   |
| N/A        | Landing Slope (%)     | N/A   | N/A        | DWS Length (in)             | N/A   |
| N/A        | Landing X Slope (%)   | N/A   | N/A        | DWS Full Width?             | N/A   |
| N/A        | Landing Curb? (Y/N)   | N/A   | N/A        | DWS Offset (in)             | N/A   |
| N/A        | Shared Landing?       | N/A   |            |                             |       |
| N/A        | Gutter Ponding?       | N/A   | N/A        | Gutter Slope (%)            | N/A   |
| N/A        | Gutter Lip Ht (in)    | N/A   | N/A        | Gutter X Slope (%)          | N/A   |
| N/A        | Painted X Walk1?      | Yes   | N/A        | Painted X Walk2?            | Yes   |
|            | X Walk 1 Direction    | To NE |            | X Walk 2 Direction          | To SE |
| N/A        | X Walk 1 Width (in)   | 108.0 | N/A        | X Walk 2 Width (in)         | 104.0 |
|            | X Walk 1 Slope (%)    | 5.4   |            | X Walk 2 Slope (%)          | 0.5   |
|            | X Walk 1 X Slope (%)  | 0.6   |            | X Walk 2 X Slope (%)        | 3.6   |
| N/A        | Ramp inside XWalk1?   | No    | N/A        | Ramp inside XWalk2?         | Yes   |
|            | Road Slope (%)        | 3.6   | N/A        | Clear Space?                | N/A   |
|            | Road X Slope (%)      | 3.9   | N/A        | Clear Space to XWalk (in)   | N/A   |
| N/A        | Any Obstructions?     | N/A   | N/A        | Storm Grate/Utility Hazard? | N/A   |
|            | Obstruction Type      |       |            | Storm Grate/Utility Type    |       |
|            |                       | N/A   |            |                             | N/A   |
|            |                       | Yes   |            | Surface Condition? (G/P)    | Good  |

Street 1 Name N COLLEGE ST  
 Stop Condition-Street 2 Signal  
 Street 2 Name E 6TH ST  
 Stop Condition-Street 1 Signal

