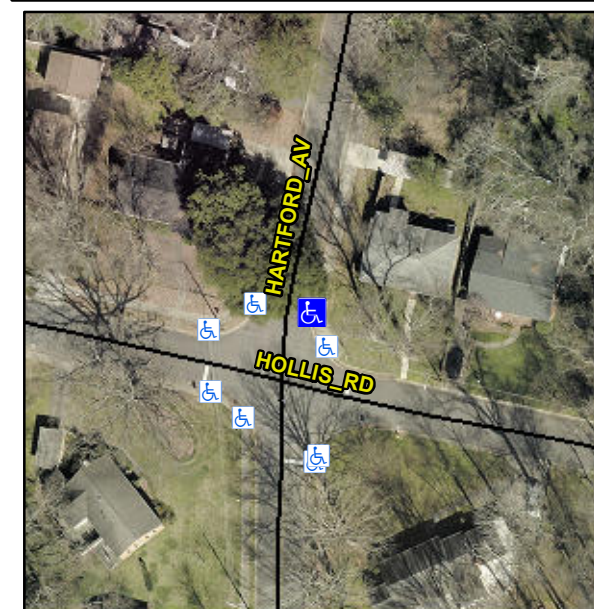


Access Compliance Report

Public Rights-of-Way

(Curb Ramps)

| | | | |
|---|--------------------------|---|------------------------|
| Intersection ID: 16451 | Main Street: HARTFORD_AV | Cross Street: HOLLIS_RD | Location: NE |
| ADA ID: FB0E7AB62520 | Ramp Type: Para | Initial Pass/Fail: Fail | Overall Compliance: No |
| Codes/Mitigation Info/Possible Solution | | Field Measurements/Component Compliance | |



Possible Solutions:

Remove & Replace Entire Ramp.

Surveyor Notes:

LT RP < 5%

PROW/ADA:

R304.5.3, R304.3.2

Total Cost:

\$ 1600.00

| Compliance | Description | Data | Compliance | Description | Data |
|------------|----------------------|------|------------|-----------------------------|------|
| N/A | Ramp Length LT (in) | 55.0 | N/A | Ramp Length RT (in) | 50.0 |
| Yes | Ramp Width LT (in) | 84.0 | Yes | Ramp Width RT (in) | 83.0 |
| Yes | Ramp Slope LT (%) | 3.7 | No | Ramp Slope RT (%) | 8.7 |
| No | Ramp XSlope LT (%) | 4.0 | No | Ramp XSlope RT (%) | 4.0 |
| N/A | Landing Length (in) | N/A | N/A | DWS Provided? | N/A |
| N/A | Landing Width (in) | N/A | N/A | DWS Contrast? | N/A |
| N/A | Landing Slope (%) | N/A | N/A | DWS Length (in) | N/A |
| N/A | Landing X Slope (%) | N/A | N/A | DWS Full Width? | N/A |
| N/A | Landing Curb? (Y/N) | N/A | N/A | DWS Offset (in) | N/A |
| N/A | Shared Landing? | N/A | | | |
| N/A | Gutter Ponding? | N/A | N/A | Gutter Slope (%) | N/A |
| N/A | Gutter Lip Ht (in) | N/A | N/A | Gutter X Slope (%) | N/A |
| N/A | Painted X Walk1? | No | N/A | Painted X Walk2? | N/A |
| | X Walk 1 Direction | To W | | X Walk 2 Direction | N/A |
| N/A | X Walk 1 Width (in) | N/A | N/A | X Walk 2 Width (in) | N/A |
| | X Walk 1 Slope (%) | 2.1 | | X Walk 2 Slope (%) | N/A |
| | X Walk 1 X Slope (%) | 0.1 | | X Walk 2 X Slope (%) | N/A |
| N/A | Ramp inside XWalk1? | N/A | N/A | Ramp inside XWalk2? | N/A |
| | Road Slope (%) | N/A | N/A | Clear Space? | N/A |
| | Road X Slope (%) | N/A | N/A | Clear Space to XWalk (in) | N/A |
| N/A | Any Obstructions? | N/A | N/A | Storm Grate/Utility Hazard? | N/A |
| | Obstruction Type | | | Storm Grate/Utility Type | |
| | | N/A | | | N/A |
| | | | Yes | Surface Condition? (G/P) | Good |
| | | | N/A | Curb Slope (%) | 0.1 |

