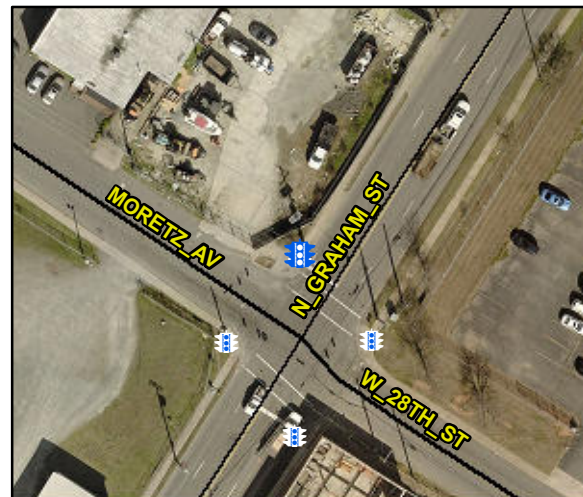


# Access Compliance Report

## Public Rights-of-Way

### (Pedestrian Signals)

|   |                                      |   |   |
|---|--------------------------------------|---|---|
| Intersection ID: N/A                    | Main Street:                         | Cross Street: N/A                       | Location: N/A                                     |
| ADA ID: 38B9E5CD4A24                    | Signal Type: One Push Button-Non APS | Overall Compliance: No                  | Severity Score: BTN 1: N/A BTN 2: N/A No BTN: N/A |
| Codes/Mitigation Info/Possible Solution |                                      | Field Measurements/Component Compliance |   |

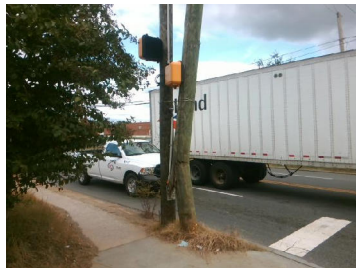


Possible Solutions: Replace Signal Push Button With APS Button on New Post. Remove & Relocate Sign.

Surveyor Notes: BUSTED POWER POLE OBSTRUCTION.

PROW/ADA: TMUTCD 4e.08, R404.3, R406.2

Total Cost: \$ 650.00



| Compliance | Description                             | Data    | Compliance | Description                            | Data |
|------------|---|---------|------------|--|------|
|            | Button Count                            | Button1 | N/A        | Distant to Additional Button (in)      | N/A  |
|            | Additional Button Present?              | No      |            | Additional Button ID                   | N/A  |
| N/A        | Signal Buttons Required?                | N/A     | N/A        | Additional Ped Posts Required          | N/A  |
|            | How Many Ped Street Xings?              | 2       |            | Located In An Island/Median?           | No   |
| N/A        | B 1 Sign Present?                       | Yes     | N/A        | B 2 Sign Present?                      | N/A  |
| Yes        | B 1 Sign Purpose?                       | Yes     | N/A        | B 2 Sign Purpose?                      | N/A  |
| Yes        | B 1 Sign Lettering & Contrast?          | Yes     | N/A        | B 2 Sign Lettering & Contrast?         | N/A  |
| Yes        | B 1 Parallel To XWalk?                  | Yes     | N/A        | B 2 Parallel To XWalk?                 | N/A  |
| Yes        | B 1 PAR to Button?                      | N/A     | N/A        | B 2 PAR to Button?                     | N/A  |
| No         | B 1 PAR to XWalk?                       | Yes     | N/A        | B 2 PAR to XWalk?                      | N/A  |
| Yes        | B 1 Clear Floor Space?                  | Yes     | N/A        | B 2 Clear Floor Space?                 | N/A  |
| N/A        | B 1 FWD Approach?                       | Yes     | N/A        | B 2 FWD Approach?                      | N/A  |
| N/A        | B 1 FWD Approach Constrained?           | No      | N/A        | B 2 FWD Approach Constrained?          | N/A  |
| No         | B 1 FWD Approach Reach (in)             | 6.0     | N/A        | B 2 FWD Approach Reach (in)            | N/A  |
| N/A        | B 1 FWD Approach Width (in)             | N/A     | N/A        | B 2 FWD Approach Width (in)            | N/A  |
| N/A        | B 1 FWD Approach Obstruction?           | Yes     | N/A        | B 2 FWD Approach Obstruction?          | N/A  |
| N/A        | B 1 FWD Approach Obstruction Dist (in)  | 6.0     | N/A        | B 2 FWD Approach ObstructionDist (in)  | N/A  |
| N/A        | B 1 PARA Approach?                      | Yes     | N/A        | B 2 PARA Approach?                     | N/A  |
| N/A        | B 1 PARA Approach Constrained?          | No      | N/A        | B 2 PARA Approach Constrained?         | N/A  |
| Yes        | B 1 PARA Approach Reach (in)            | 6.0     | N/A        | B 2 PARA Approach Reach (in)           | N/A  |
| N/A        | B 1 PARA Approach Width (in)            | N/A     | N/A        | B 2 PARA Approach Width (in)           | N/A  |
| N/A        | B 1 PARA Approach Obstruction?          | Yes     | N/A        | B 2 PARA Approach Obstruction?         | N/A  |
| N/A        | B 1 PARA Approach Obstruction Dist (in) | 6.0     | N/A        | B 2 PARA Approach ObstructionDist (in) | N/A  |
| Yes        | B 1 Clear Floor Space Slope (%)         | 0.1     | N/A        | B 2 Clear Floor Space Slope (%)        | N/A  |
| Yes        | B 1 Clear Floor Space XSlope (%)        | 0.4     | N/A        | B 2 Clear Floor Space XSlope (%)       | N/A  |
| N/A        | B 1 PAR Slope (%)                       | 0.1     | N/A        | B 2 PAR Slope (%)                      | N/A  |
| Yes        | B 1 Height (in)                         | 39.0    | N/A        | B 2 Height (in)                        | N/A  |
| Yes        | B 1 Pressure (#)                        | 1.0     | N/A        | B 2 Pressure (#)                       | N/A  |
| Yes        | B 1 Closed Fist Operation?              | Yes     | N/A        | B 2 Closed Fist Operation?             | N/A  |

#### MUTCD Compliance

|     |                           |               |     |                           |     |
|-----|---------------------------|---------------|-----|---------------------------|-----|
| Yes | B 1 Clear Xing Direction? | ClearlyMarked | N/A | B 2 Clear Xing Direction? | N/A |
|     | B 1 Crossing Direction    | To E          |     | B 2 Crossing Direction    | N/A |
| No  | B 1 DistanceTo XWalk (in) | 119.0         | N/A | B 2 DistanceTo XWalk (in) | N/A |
| Yes | B 1 DistanceTo Curb (in)  | 34.0          | N/A | B 2 DistanceTo Curb (in)  | N/A |
| Yes | B 1 Diameter (in)         | 2.0           | N/A | B 2 Diameter (in)         | N/A |

#### APS Compliance

| Is Button 1 APS or Non-APS?         | NonAPS | Is Button 2 APS or Non-APS?         | N/A |
|-------------------------------------|--------|-------------------------------------|-----|
| N/A B 1 VibroTact Arrow?            | N/A    | N/A B 2 VibroTact Arrow?            | N/A |
| N/A B 1 VibroTact Parallel to Xing? | N/A    | N/A B 2 VibroTact Parallel to Xing? | N/A |
| N/A B 1 VibroTact Contrast          | N/A    | N/A B 2 VibroTact Contrast          | N/A |
| N/A B 1 Pilot Light?                | N/A    | N/A B 2 Pilot Light?                | N/A |
| N/A B 1 Pilot Light Illumination?   | N/A    | N/A B 2 Pilot Light Illumination?   | N/A |
| N/A B 1 Verbal Walk Cycle?          | N/A    | N/A B 2 Verbal Walk Cycle?          | N/A |
| N/A B 1 Verbal Message Audible?     | N/A    | N/A B 2 Verbal Message Audible?     | N/A |
| N/A B 1 Locator Tone?               | N/A    | N/A B 2 Locator Tone?               | N/A |
| N/A B 1 Percussive Walk Cycle?      | N/A    | N/A B 2 Percussive Walk Cycle?      | N/A |
| N/A B 1 Extended Press Feature?     | N/A    | N/A B 2 Extended Press Feature?     | N/A |
| N/A B 1 Tone Audible Range?         | N/A    | N/A B 2 Tone Audible Range?         | N/A |