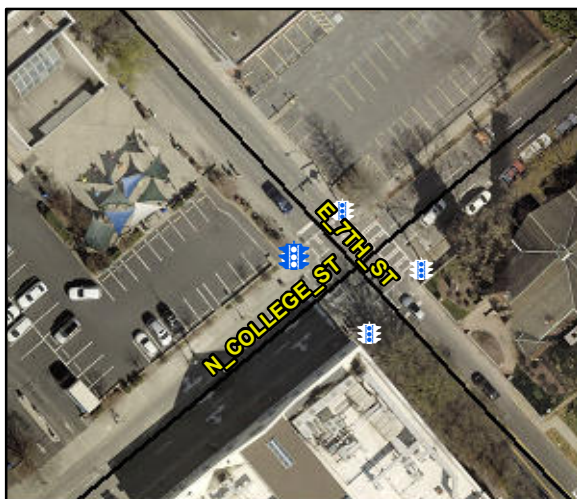


# Access Compliance Report

## Public Rights-of-Way

### (Pedestrian Signals)

|   |              |   |  |
|---|--------------|---|--|
| Intersection ID: N/A                    | Main Street: | Cross Street: N/A                       | Location: N/A                                    |
| ADA ID: 61E964F16471                    | Signal Type: | Overall Compliance: Yes                 | Severity Score: BTN 1:N/A BTN 2: N/A No BTN: N/A |
| Codes/Mitigation Info/Possible Solution |              | Field Measurements/Component Compliance |  |



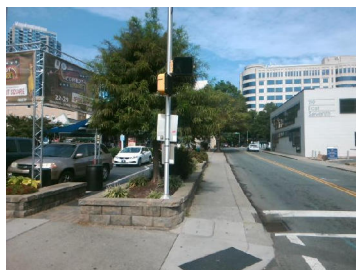
Possible Solutions: N/A

Surveyor Notes: N/A

PROW/ADA: N/A

Total Cost:

\$ 0.00



| Compliance | Description                             | Data    | Compliance | Description                            | Data |
|------------|---|---------|------------|--|------|
|            | Button Count                            | Button0 | N/A        | Distant to Additional Button (in)      | N/A  |
|            | Additional Button Present?              | N/A     |            | Additional Button ID                   | N/A  |
| N/A        | Signal Buttons Required?                | N/A     | N/A        | Additional Ped Posts Required          | N/A  |
|            | How Many Ped Street Xings?              | 2       |            | Located In An Island/Median?           | No   |
| N/A        | B 1 Sign Present?                       | N/A     | N/A        | B 2 Sign Present?                      | N/A  |
| N/A        | B 1 Sign Purpose?                       | N/A     | N/A        | B 2 Sign Purpose?                      | N/A  |
| N/A        | B 1 Sign Lettering & Contrast?          | N/A     | N/A        | B 2 Sign Lettering & Contrast?         | N/A  |
| N/A        | B 1 Parallel To XWalk?                  | N/A     | N/A        | B 2 Parallel To XWalk?                 | N/A  |
| N/A        | B 1 PAR to Button?                      | N/A     | N/A        | B 2 PAR to Button?                     | N/A  |
| N/A        | B 1 PAR to XWalk?                       | N/A     | N/A        | B 2 PAR to XWalk?                      | N/A  |
| N/A        | B 1 Clear Floor Space?                  | N/A     | N/A        | B 2 Clear Floor Space?                 | N/A  |
| N/A        | B 1 FWD Approach?                       | N/A     | N/A        | B 2 FWD Approach?                      | N/A  |
| N/A        | B 1 FWD Approach Constrained?           | N/A     | N/A        | B 2 FWD Approach Constrained?          | N/A  |
| N/A        | B 1 FWD Approach Reach (in)             | N/A     | N/A        | B 2 FWD Approach Reach (in)            | N/A  |
| N/A        | B 1 FWD Approach Width (in)             | N/A     | N/A        | B 2 FWD Approach Width (in)            | N/A  |
| N/A        | B 1 FWD Approach Obstruction?           | N/A     | N/A        | B 2 FWD Approach Obstruction?          | N/A  |
| N/A        | B 1 FWD Approach Obstruction Dist (in)  | N/A     | N/A        | B 2 FWD Approach ObstructionDist (in)  | N/A  |
| N/A        | B 1 PARA Approach?                      | N/A     | N/A        | B 2 PARA Approach?                     | N/A  |
| N/A        | B 1 PARA Approach Constrained?          | N/A     | N/A        | B 2 PARA Approach Constrained?         | N/A  |
| N/A        | B 1 PARA Approach Reach (in)            | N/A     | N/A        | B 2 PARA Approach Reach (in)           | N/A  |
| N/A        | B 1 PARA Approach Width (in)            | N/A     | N/A        | B 2 PARA Approach Width (in)           | N/A  |
| N/A        | B 1 PARA Approach Obstruction?          | N/A     | N/A        | B 2 PARA Approach Obstruction?         | N/A  |
| N/A        | B 1 PARA Approach Obstruction Dist (in) | N/A     | N/A        | B 2 PARA Approach ObstructionDist (in) | N/A  |
| N/A        | B 1 Clear Floor Space Slope (%)         | N/A     | N/A        | B 2 Clear Floor Space Slope (%)        | N/A  |
| N/A        | B 1 Clear Floor Space XSlope (%)        | N/A     | N/A        | B 2 Clear Floor Space XSlope (%)       | N/A  |
| N/A        | B 1 PAR Slope (%)                       | N/A     | N/A        | B 2 PAR Slope (%)                      | N/A  |
| N/A        | B 1 Height (in)                         | N/A     | N/A        | B 2 Height (in)                        | N/A  |
| N/A        | B 1 Pressure (#)                        | N/A     | N/A        | B 2 Pressure (#)                       | N/A  |
| N/A        | B 1 Closed Fist Operation?              | N/A     | N/A        | B 2 Closed Fist Operation?             | N/A  |

#### MUTCD Compliance

|     |                           |     |     |                           |     |
|-----|---------------------------|-----|-----|---------------------------|-----|
| N/A | B 1 Clear Xing Direction? | N/A | N/A | B 2 Clear Xing Direction? | N/A |
|     | B 1 Crossing Direction    | N/A |     | B 2 Crossing Direction    | N/A |
| N/A | B 1 DistanceTo XWalk (in) | N/A | N/A | B 2 DistanceTo XWalk (in) | N/A |
| N/A | B 1 DistanceTo Curb (in)  | N/A | N/A | B 2 DistanceTo Curb (in)  | N/A |
| N/A | B 1 Diameter (in)         | N/A | N/A | B 2 Diameter (in)         | N/A |

#### APS Compliance

|                             |                                 |                             |                                 |
|-----------------------------|---------------------------------|-----------------------------|---------------------------------|
| Is Button 1 APS or Non-APS? | N/A                             | Is Button 2 APS or Non-APS? | N/A                             |
| N/A                         | B 1 VibroTact Arrow?            | N/A                         | B 2 VibroTact Arrow?            |
| N/A                         | B 1 VibroTact Parallel to Xing? | N/A                         | B 2 VibroTact Parallel to Xing? |
| N/A                         | B 1 VibroTact Contrast          | N/A                         | B 2 VibroTact Contrast          |
| N/A                         | B 1 Pilot Light?                | N/A                         | B 2 Pilot Light?                |
| N/A                         | B 1 Pilot Light Illumination?   | N/A                         | B 2 Pilot Light Illumination?   |
| N/A                         | B 1 Verbal Walk Cycle?          | N/A                         | B 2 Verbal Walk Cycle?          |
| N/A                         | B 1 Verbal Message Audible?     | N/A                         | B 2 Verbal Message Audible?     |
| N/A                         | B 1 Locator Tone?               | N/A                         | B 2 Locator Tone?               |
| N/A                         | B 1 Percussive Walk Cycle?      | N/A                         | B 2 Percussive Walk Cycle?      |
| N/A                         | B 1 Extended Press Feature?     | N/A                         | B 2 Extended Press Feature?     |
| N/A                         | B 1 Tone Audible Range?         | N/A                         | B 2 Tone Audible Range?         |