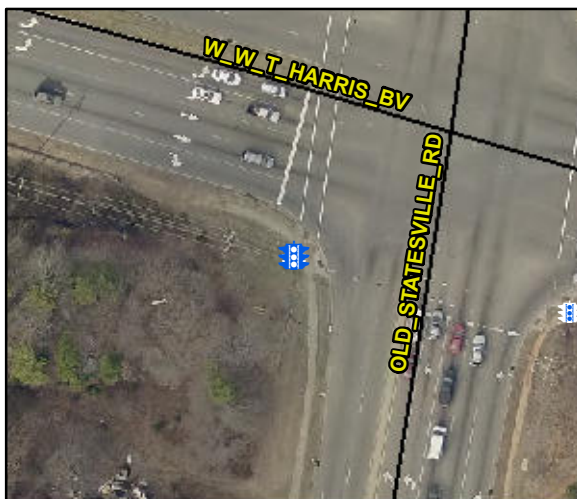


Access Compliance Report

Public Rights-of-Way

(Pedestrian Signals)

| | | | |
|---|--------------------------------------|---|---|
| Intersection ID: N/A | Main Street: | Cross Street: N/A | Location: N/A |
| ADA ID: 699D090AEAFB | Signal Type: One Push Button-Non APS | Overall Compliance: No | Severity Score: BTN 1: N/A BTN 2: N/A No BTN: N/A |
| Codes/Mitigation Info/Possible Solution | | Field Measurements/Component Compliance | |



Possible Solutions: Replace Signal Push Button With APS Button on New Post. Remove & Relocate Sign.

Surveyor Notes: N/A

PROW/ADA: TMUTCD 4e.08, R404.2, R406.2

Total Cost: \$ 650.00



| Compliance | Description | Data | Compliance | Description | Data |
|------------|---|---------|------------|--|------|
| | Button Count | Button1 | N/A | Distant to Additional Button (in) | N/A |
| | Additional Button Present? | No | | Additional Button ID | N/A |
| N/A | Signal Buttons Required? | N/A | N/A | Additional Ped Posts Required | N/A |
| | How Many Ped Street Xings? | 2 | | Located In An Island/Median? | No |
| N/A | B 1 Sign Present? | Yes | N/A | B 2 Sign Present? | N/A |
| Yes | B 1 Sign Purpose? | Yes | N/A | B 2 Sign Purpose? | N/A |
| Yes | B 1 Sign Lettering & Contrast? | Yes | N/A | B 2 Sign Lettering & Contrast? | N/A |
| Yes | B 1 Parallel To XWalk? | Yes | N/A | B 2 Parallel To XWalk? | N/A |
| Yes | B 1 PAR to Button? | Yes | N/A | B 2 PAR to Button? | N/A |
| Yes | B 1 PAR to XWalk? | Yes | N/A | B 2 PAR to XWalk? | N/A |
| Yes | B 1 Clear Floor Space? | Yes | N/A | B 2 Clear Floor Space? | N/A |
| N/A | B 1 FWD Approach? | Yes | N/A | B 2 FWD Approach? | N/A |
| N/A | B 1 FWD Approach Constrained? | No | N/A | B 2 FWD Approach Constrained? | N/A |
| No | B 1 FWD Approach Reach (in) | 11.0 | N/A | B 2 FWD Approach Reach (in) | N/A |
| N/A | B 1 FWD Approach Width (in) | N/A | N/A | B 2 FWD Approach Width (in) | N/A |
| N/A | B 1 FWD Approach Obstruction? | Yes | N/A | B 2 FWD Approach Obstruction? | N/A |
| N/A | B 1 FWD Approach Obstruction Dist (in) | 5.0 | N/A | B 2 FWD Approach ObstructionDist (in) | N/A |
| N/A | B 1 PARA Approach? | Yes | N/A | B 2 PARA Approach? | N/A |
| N/A | B 1 PARA Approach Constrained? | No | N/A | B 2 PARA Approach Constrained? | N/A |
| Yes | B 1 PARA Approach Reach (in) | 9.0 | N/A | B 2 PARA Approach Reach (in) | N/A |
| N/A | B 1 PARA Approach Width (in) | 60.0 | N/A | B 2 PARA Approach Width (in) | N/A |
| N/A | B 1 PARA Approach Obstruction? | Yes | N/A | B 2 PARA Approach Obstruction? | N/A |
| N/A | B 1 PARA Approach Obstruction Dist (in) | 6.0 | N/A | B 2 PARA Approach ObstructionDist (in) | N/A |
| Yes | B 1 Clear Floor Space Slope (%) | 1.5 | N/A | B 2 Clear Floor Space Slope (%) | N/A |
| No | B 1 Clear Floor Space XSlope (%) | 2.9 | N/A | B 2 Clear Floor Space XSlope (%) | N/A |
| N/A | B 1 PAR Slope (%) | 0.8 | N/A | B 2 PAR Slope (%) | N/A |
| Yes | B 1 Height (in) | 36.5 | N/A | B 2 Height (in) | N/A |
| Yes | B 1 Pressure (#) | 1.0 | N/A | B 2 Pressure (#) | N/A |
| Yes | B 1 Closed Fist Operation? | Yes | N/A | B 2 Closed Fist Operation? | N/A |

MUTCD Compliance

| | | | | | |
|-----|---------------------------|---------------|-----|---------------------------|-----|
| Yes | B 1 Clear Xing Direction? | ClearlyMarked | N/A | B 2 Clear Xing Direction? | N/A |
| | B 1 Crossing Direction | To N | | B 2 Crossing Direction | N/A |
| Yes | B 1 DistanceTo XWalk (in) | 0.0 | N/A | B 2 DistanceTo XWalk (in) | N/A |
| No | B 1 DistanceTo Curb (in) | 125.0 | N/A | B 2 DistanceTo Curb (in) | N/A |
| Yes | B 1 Diameter (in) | 2.0 | N/A | B 2 Diameter (in) | N/A |

APS Compliance

| Is Button 1 APS or Non-APS? | NonAPS | Is Button 2 APS or Non-APS? | N/A |
|-------------------------------------|--------|-------------------------------------|-----|
| N/A B 1 VibroTact Arrow? | N/A | N/A B 2 VibroTact Arrow? | N/A |
| N/A B 1 VibroTact Parallel to Xing? | N/A | N/A B 2 VibroTact Parallel to Xing? | N/A |
| N/A B 1 VibroTact Contrast | N/A | N/A B 2 VibroTact Contrast | N/A |
| N/A B 1 Pilot Light? | N/A | N/A B 2 Pilot Light? | N/A |
| N/A B 1 Pilot Light Illumination? | N/A | N/A B 2 Pilot Light Illumination? | N/A |
| N/A B 1 Verbal Walk Cycle? | N/A | N/A B 2 Verbal Walk Cycle? | N/A |
| N/A B 1 Verbal Message Audible? | N/A | N/A B 2 Verbal Message Audible? | N/A |
| N/A B 1 Locator Tone? | N/A | N/A B 2 Locator Tone? | N/A |
| N/A B 1 Percussive Walk Cycle? | N/A | N/A B 2 Percussive Walk Cycle? | N/A |
| N/A B 1 Extended Press Feature? | N/A | N/A B 2 Extended Press Feature? | N/A |
| N/A B 1 Tone Audible Range? | N/A | N/A B 2 Tone Audible Range? | N/A |