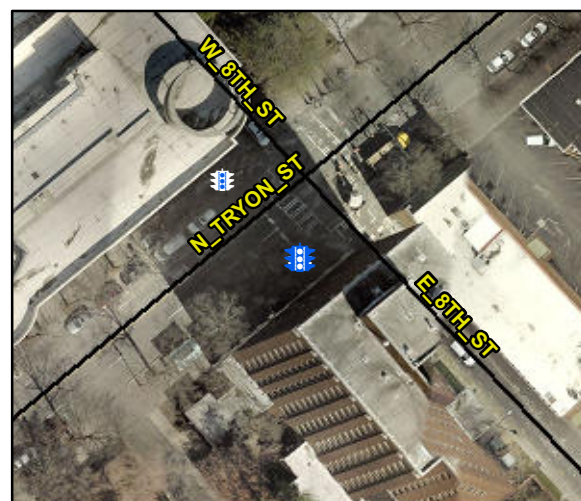


Access Compliance Report

Public Rights-of-Way

(Pedestrian Signals)

| | | | |
|---|--------------|---|--|
| Intersection ID: N/A | Main Street: | Cross Street: N/A | Location: N/A |
| ADA ID: 9C1AE03475E2 | Signal Type: | Overall Compliance: Yes | Severity Score: BTN 1:N/A BTN 2: N/A No BTN: N/A |
| Codes/Mitigation Info/Possible Solution | | Field Measurements/Component Compliance | |



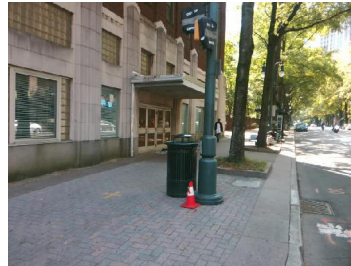
Possible Solutions: N/A

Surveyor Notes: TEXT HT 7/16

PROW/ADA: N/A

Total Cost:

\$ 0.00



| Compliance | Description | Data | Compliance | Description | Data |
|------------|---|---------|------------|--|------|
| | Button Count | Button0 | N/A | Distant to Additional Button (in) | N/A |
| | Additional Button Present? | N/A | | Additional Button ID | N/A |
| N/A | Signal Buttons Required? | N/A | N/A | Additional Ped Posts Required | N/A |
| | How Many Ped Street Xings? | 2 | | Located In An Island/Median? | No |
| N/A | B 1 Sign Present? | N/A | N/A | B 2 Sign Present? | N/A |
| N/A | B 1 Sign Purpose? | N/A | N/A | B 2 Sign Purpose? | N/A |
| N/A | B 1 Sign Lettering & Contrast? | N/A | N/A | B 2 Sign Lettering & Contrast? | N/A |
| N/A | B 1 Parallel To XWalk? | N/A | N/A | B 2 Parallel To XWalk? | N/A |
| N/A | B 1 PAR to Button? | N/A | N/A | B 2 PAR to Button? | N/A |
| N/A | B 1 PAR to XWalk? | N/A | N/A | B 2 PAR to XWalk? | N/A |
| N/A | B 1 Clear Floor Space? | N/A | N/A | B 2 Clear Floor Space? | N/A |
| N/A | B 1 FWD Approach? | N/A | N/A | B 2 FWD Approach? | N/A |
| N/A | B 1 FWD Approach Constrained? | N/A | N/A | B 2 FWD Approach Constrained? | N/A |
| N/A | B 1 FWD Approach Reach (in) | N/A | N/A | B 2 FWD Approach Reach (in) | N/A |
| N/A | B 1 FWD Approach Width (in) | N/A | N/A | B 2 FWD Approach Width (in) | N/A |
| N/A | B 1 FWD Approach Obstruction? | N/A | N/A | B 2 FWD Approach Obstruction? | N/A |
| N/A | B 1 FWD Approach Obstruction Dist (in) | N/A | N/A | B 2 FWD Approach ObstructionDist (in) | N/A |
| N/A | B 1 PARA Approach? | N/A | N/A | B 2 PARA Approach? | N/A |
| N/A | B 1 PARA Approach Constrained? | N/A | N/A | B 2 PARA Approach Constrained? | N/A |
| N/A | B 1 PARA Approach Reach (in) | N/A | N/A | B 2 PARA Approach Reach (in) | N/A |
| N/A | B 1 PARA Approach Width (in) | N/A | N/A | B 2 PARA Approach Width (in) | N/A |
| N/A | B 1 PARA Approach Obstruction? | N/A | N/A | B 2 PARA Approach Obstruction? | N/A |
| N/A | B 1 PARA Approach Obstruction Dist (in) | N/A | N/A | B 2 PARA Approach ObstructionDist (in) | N/A |
| N/A | B 1 Clear Floor Space Slope (%) | N/A | N/A | B 2 Clear Floor Space Slope (%) | N/A |
| N/A | B 1 Clear Floor Space XSlope (%) | N/A | N/A | B 2 Clear Floor Space XSlope (%) | N/A |
| N/A | B 1 PAR Slope (%) | N/A | N/A | B 2 PAR Slope (%) | N/A |
| N/A | B 1 Height (in) | N/A | N/A | B 2 Height (in) | N/A |
| N/A | B 1 Pressure (#) | N/A | N/A | B 2 Pressure (#) | N/A |
| N/A | B 1 Closed Fist Operation? | N/A | N/A | B 2 Closed Fist Operation? | N/A |

MUTCD Compliance

| | | | | | |
|-----|---------------------------|-----|-----|---------------------------|-----|
| N/A | B 1 Clear Xing Direction? | N/A | N/A | B 2 Clear Xing Direction? | N/A |
| | B 1 Crossing Direction | N/A | | B 2 Crossing Direction | N/A |
| N/A | B 1 DistanceTo XWalk (in) | N/A | N/A | B 2 DistanceTo XWalk (in) | N/A |
| N/A | B 1 DistanceTo Curb (in) | N/A | N/A | B 2 DistanceTo Curb (in) | N/A |
| N/A | B 1 Diameter (in) | N/A | N/A | B 2 Diameter (in) | N/A |

APS Compliance

| | | | |
|-----------------------------|---------------------------------|-----------------------------|---------------------------------|
| Is Button 1 APS or Non-APS? | N/A | Is Button 2 APS or Non-APS? | N/A |
| N/A | B 1 VibroTact Arrow? | N/A | B 2 VibroTact Arrow? |
| N/A | B 1 VibroTact Parallel to Xing? | N/A | B 2 VibroTact Parallel to Xing? |
| N/A | B 1 VibroTact Contrast | N/A | B 2 VibroTact Contrast |
| N/A | B 1 Pilot Light? | N/A | B 2 Pilot Light? |
| N/A | B 1 Pilot Light Illumination? | N/A | B 2 Pilot Light Illumination? |
| N/A | B 1 Verbal Walk Cycle? | N/A | B 2 Verbal Walk Cycle? |
| N/A | B 1 Verbal Message Audible? | N/A | B 2 Verbal Message Audible? |
| N/A | B 1 Locator Tone? | N/A | B 2 Locator Tone? |
| N/A | B 1 Percussive Walk Cycle? | N/A | B 2 Percussive Walk Cycle? |
| N/A | B 1 Extended Press Feature? | N/A | B 2 Extended Press Feature? |
| N/A | B 1 Tone Audible Range? | N/A | B 2 Tone Audible Range? |