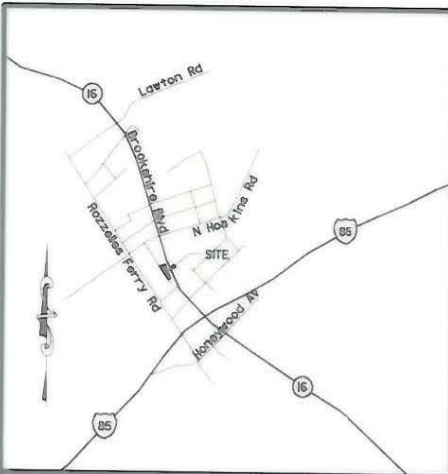
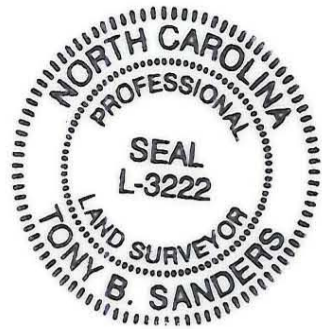


I, TONY B. SANDERS, CERTIFY THAT THIS PLAT WAS PREPARED UNDER MY SUPERVISION AND THAT THE PLAT WAS PREPARED FOR THE PURPOSE OF THE ACQUISITION AND EASEMENTS ONLY, AND IS NOT INTENDED TO BE A BOUNDARY SURVEY OF PROPERTY SHOWN.

*Tony B. Sanders* 7.22.02  
 TONY B. SANDERS, NC P.L.S. L-3222, DATE



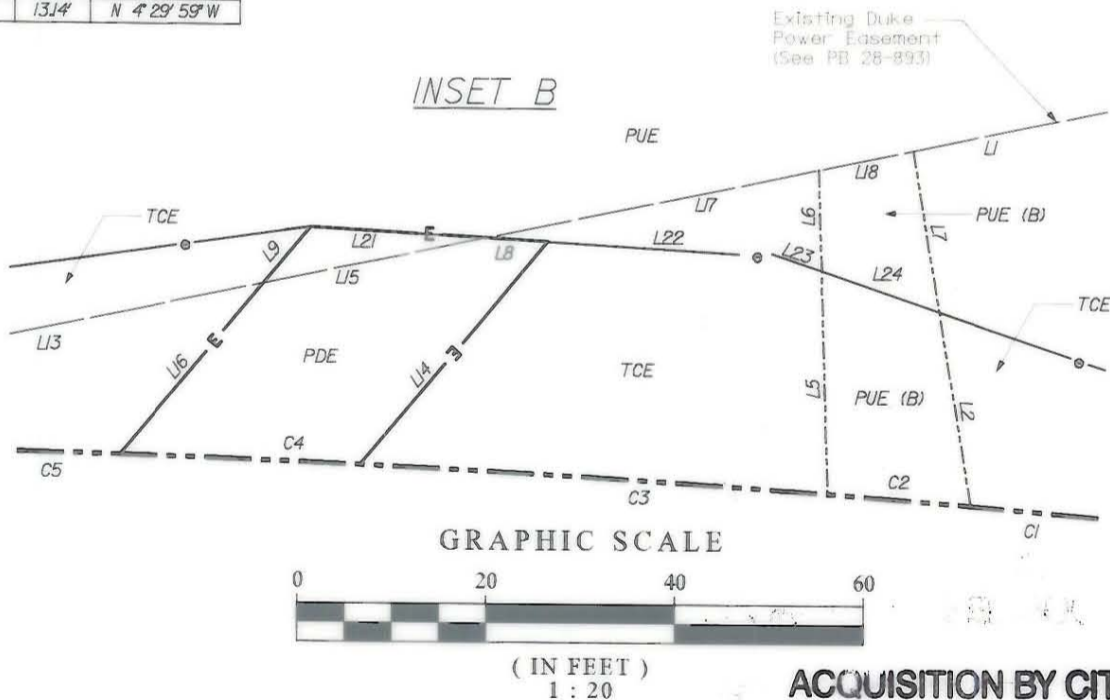
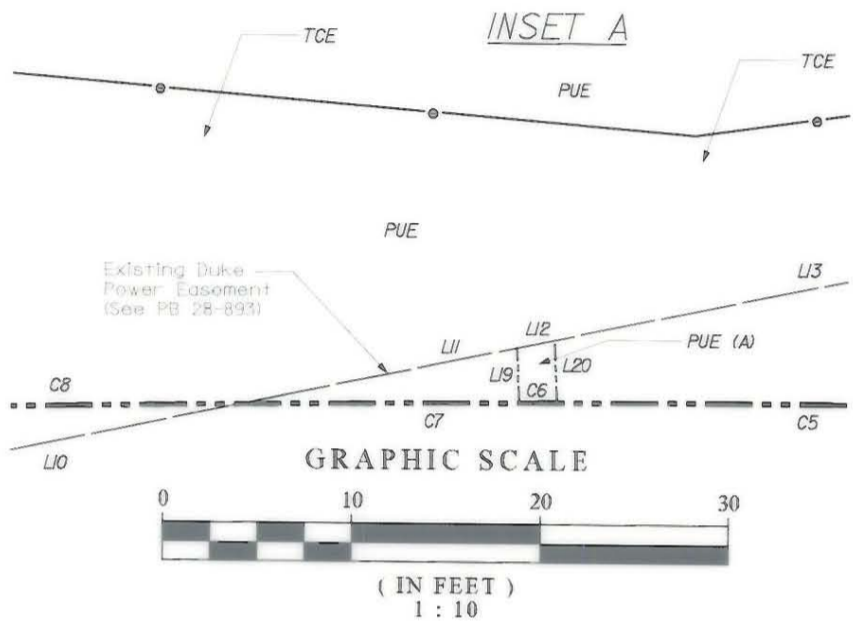
VICINITY MAP (NOT TO SCALE)

REVISIONS:  
 NEW IRON PINS SET 7/22/02



CURVE TABLE				
CURVE	CHORD BEARING	CHORD	LENGTH	RADIUS
C1	N 17° 59' 10" W	13.65'	13.65'	1694.51'
C2	N 18° 28' 27" W	15.21'	15.21'	1694.51'
C3	N 19° 34' 12" W	49.61'	49.62'	1694.51'
C4	N 20° 50' 30" W	25.60'	25.60'	1694.51'
C5	N 22° 10' 52" W	53.63'	53.63'	1694.51'
C6	N 23° 07' 18" W	2.00'	2.00'	1694.51'
C7	N 23° 24' 20" W	14.80'	14.80'	1694.51'
C8	N 25° 55' 13" W	133.91'	133.94'	1694.51'

LINE TABLE		
LINE	LENGTH	BEARING
L2	20.39'	N 57° 26' 44" E
L5	23.09'	S 65° 18' 05" W
L6	10.39'	N 65° 18' 05" E
L7	16.78'	N 57° 26' 44" E
L8	6.62'	N 19° 31' 36" W
L9	7.68'	S 72° 13' 38" E
L11	14.98'	N 34° 17' 51" W
L12	2.03'	N 34° 17' 51" W
L13	70.45'	N 34° 17' 51" W
L14	30.44'	S 72° 13' 38" E
L15	23.97'	N 34° 17' 51" W
L16	23.49'	S 72° 13' 38" E
L17	35.98'	N 34° 17' 51" W
L18	10.19'	N 34° 17' 51" W
L19	2.83'	N 64° 49' 20" E
L20	3.22'	N 64° 49' 20" E
L21	18.53'	N 19° 31' 36" W
L22	24.71'	N 19° 31' 36" W
L23	4.54'	N 4° 29' 59" W
L24	13.14'	N 4° 29' 59" W



**ACQUISITION BY CITY**  
**RECORDED IN DEED BOOK**  
**15310-296**  
**DATE 5-8-03**

LEGEND	
● IPS	IRON PIN SET
○ EIP	EXISTING IRON PIN
◇ R/W	R/W MONUMENT
—	PROPERTY LINE
- - -	EXISTING R/W
— · — ·	NEW R/W
- - -	EXISTING DUKE POWER EASEMENT
— P — P	PERMANENT UTILITY EASEMENT (PUE)
— E — E	PERMANENT DRAINAGE EASEMENT (PDE)
— T — T	TEMPORARY CONSTRUCTION EASEMENT (TCE)
▨	BUILDING TO BE REMOVED

PREPARED BY:  
**CTE ENGINEERS**  
 CONSER TOWNSEND ENVIRONMENTAL ENGINEERS, INC.  
 13325 SOUTH POINT BOULEVARD, SUITE 400  
 CHARLOTTE, NC 28273  
 704-583-0902

CHECKED BY:  
 SURVEY AND MAPPING CONTROL, INC.  
 10100 PARK CEDAR DRIVE, SUITE 162  
 CHARLOTTE, NC 28210  
 704-542-9095

CHARLOTTE	
ENGINEERING AND PROPERTY MANAGEMENT	
512-99-014 JOB NO.	FILE NO.
AS BUILT	DATE
<b>BROOKSHIRE BOULEVARD (NC16)</b> <b>PROPERTY ACQUISITION</b>	
<b>PARCEL 7</b> <b>McCLURE REAL ESTATE &amp; INVESTMENTS, INC.</b>	
TBS SURVEYED BY	MKA PREPARED BY
HKA CHECKED BY	TBS APPROVED BY
12/12/01 DATE	SHEET 2
	OF 2