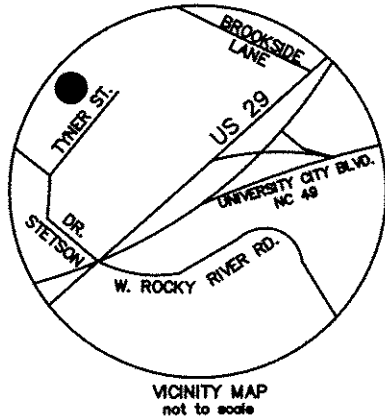


I, DAVID H. SNIDER, CERTIFY THAT THIS PLAT WAS DRAWN UNDER MY SUPERVISION FROM AN ACTUAL FIELD SURVEY UNDER MY SUPERVISION. THAT THE DEEDS AND PLATS NOTED WERE USED AS REFERENCES. THAT THE BOUNDARIES NOT SURVEYED ARE CLEARLY INDICATED AS DRAWN FROM INFORMATION INDICATED, THAT THE RATIO OF PRECISION AS CALCULATED IS 1:10,000;

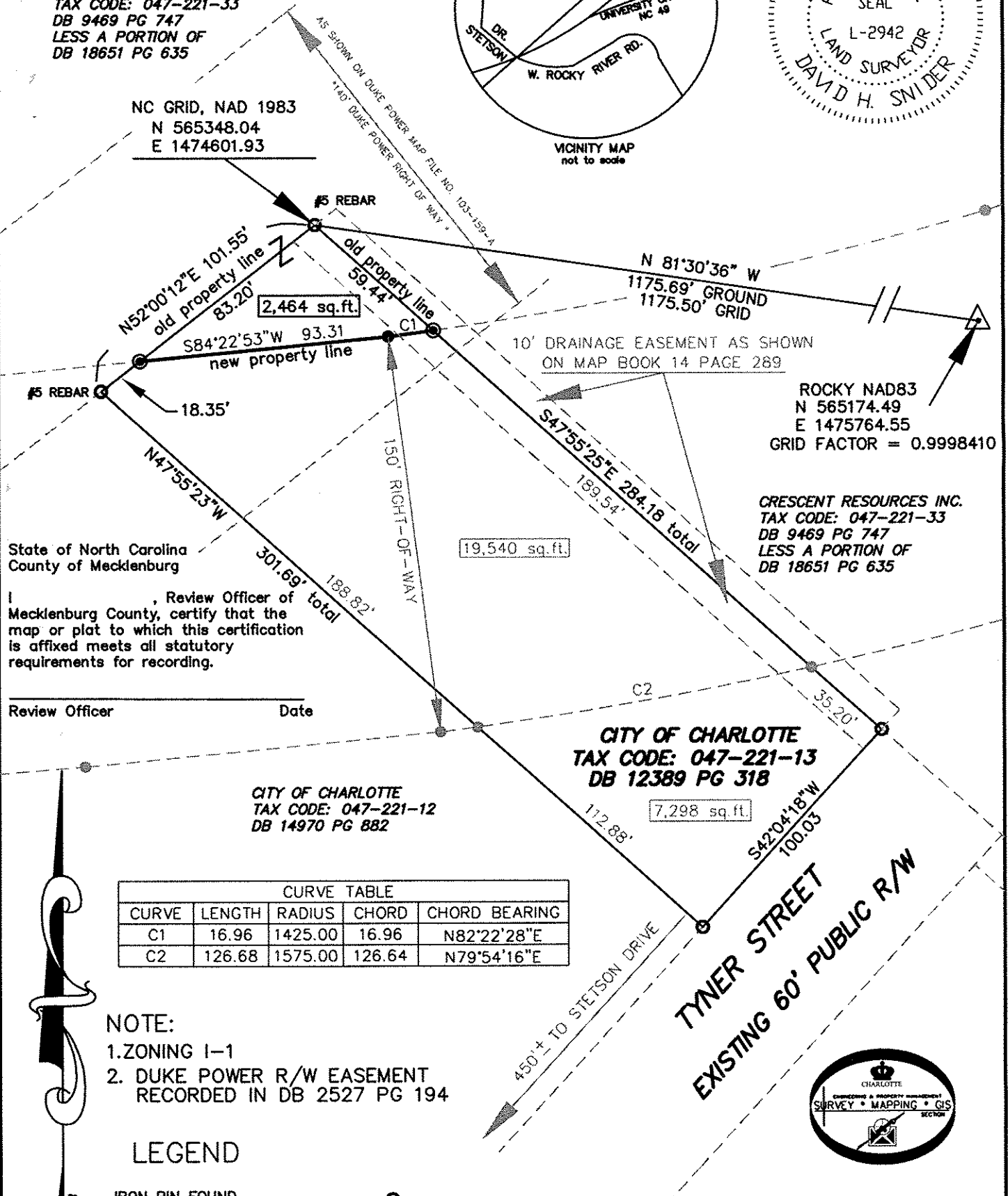
WITNESS MY ORIGINAL SIGNATURE, REGISTRATION NUMBER AND SEAL THIS 3rd. DAY OF OCTOBER, A.D., 2007

David H. Snider 10/03/07
 DAVID H. SNIDER, NC P.L.S. L-2942 DATE



CRESCENT RESOURCES INC.
 TAX CODE: 047-221-33
 DB 9469 PG 747
 LESS A PORTION OF
 DB 18651 PG 635

NC GRID, NAD 1983
 N 565348.04
 E 1474601.93



ROCKY NAD83
 N 565174.49
 E 1475764.55
 GRID FACTOR = 0.9998410

CRESCENT RESOURCES INC.
 TAX CODE: 047-221-33
 DB 9469 PG 747
 LESS A PORTION OF
 DB 18651 PG 635

State of North Carolina
 County of Mecklenburg

I, _____, Review Officer of Mecklenburg County, certify that the map or plat to which this certification is affixed meets all statutory requirements for recording.

Review Officer _____ Date _____

CITY OF CHARLOTTE
 TAX CODE: 047-221-12
 DB 14970 PG 882

CITY OF CHARLOTTE
 TAX CODE: 047-221-13
 DB 12389 PG 318

CURVE TABLE				
CURVE	LENGTH	RADIUS	CHORD	CHORD BEARING
C1	16.96	1425.00	16.96	N82°22'28"E
C2	126.68	1575.00	126.64	N79°54'16"E

- NOTE:
- ZONING I-1
 - DUKE POWER R/W EASEMENT RECORDED IN DB 2527 PG 194

LEGEND

- IRON PIN FOUND
- IRON PIN SET #6 rebar & cap
- NO CORNER SET OR FOUND
- NCGS CONTROL MONUMENT
- LINES SURVEYED
- LINES NOT SURVEYED

PREPARED BY:
 CITY OF CHARLOTTE
 ENGINEERING AND PROPERTY MANAGEMENT
 600 EAST FOURTH STREET
 CHARLOTTE, NC 28208
 704-336-2291

		CHARLOTTE ENGINEERING DEPARTMENT
REVISIONS	NC. 49 / US 29 INTERCHANGE RECONSTRUCTION	JOB NO. 512-99-009
		FILE NO. LAN #299009
SCALE 1" = 50' DRAWN BY G.C.F.		SHEET 1
		OF 1
DATE	CHECKED BY	SURVEY SUPR. <i>DHS</i>

DB 23614 - 601