

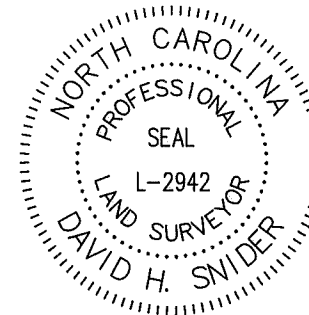
VICINITY MAP
Not to Scale

LEGEND

- REBAR OR IRON PIPE FOUND
- CITY TRAVERSE REBAR & CAP
- CALCULATED POINT
- LINES SURVEYED
- LINES NOT SURVEYED
- TEMPORARY CONSTRUCTION EASEMENT (TCE)
- STORM DRAINAGE EASEMENT (SDE)

I, DAVID H. SNIDER, CERTIFY THAT THIS PLAT WAS PREPARED UNDER MY SUPERVISION AND THAT THE PLAT WAS PREPARED FOR THE PURPOSE OF EASEMENTS ONLY, AND IS NOT INTENDED TO BE A BOUNDARY SURVEY OF PROPERTY SHOWN.

David H. Snider
DAVID H. SNIDER, NC P.L.S. L-2942 DATE



047-361-15
ROBINSON & WATERS
REALTY
DB 3079-263
6557 RUMPLE RD.

NOTES:

- 1) BEARINGS AND DISTANCES SHOWN IN PARENTHESES ARE BASED ON RECORDED INFORMATION, DB 5980-658
- 2) TOTAL AREA 20,574 SQ.FT.
- 3) TEMPORARY CONSTRUCTION EASEMENT 1,663 SQ.FT.
- 4) STORM DRAINAGE EASEMENT 1,138 SQ.FT.
- 5) AREA REMAINING 20,574 SQ.FT.

047-361-22
COMMON OPEN SPACE
PER MB 57-79

State of North Carolina
County of Mecklenburg

_____, Review Officer of Mecklenburg County, certify that the map or plat to which this certification is affixed meets all statutory requirements for recording.

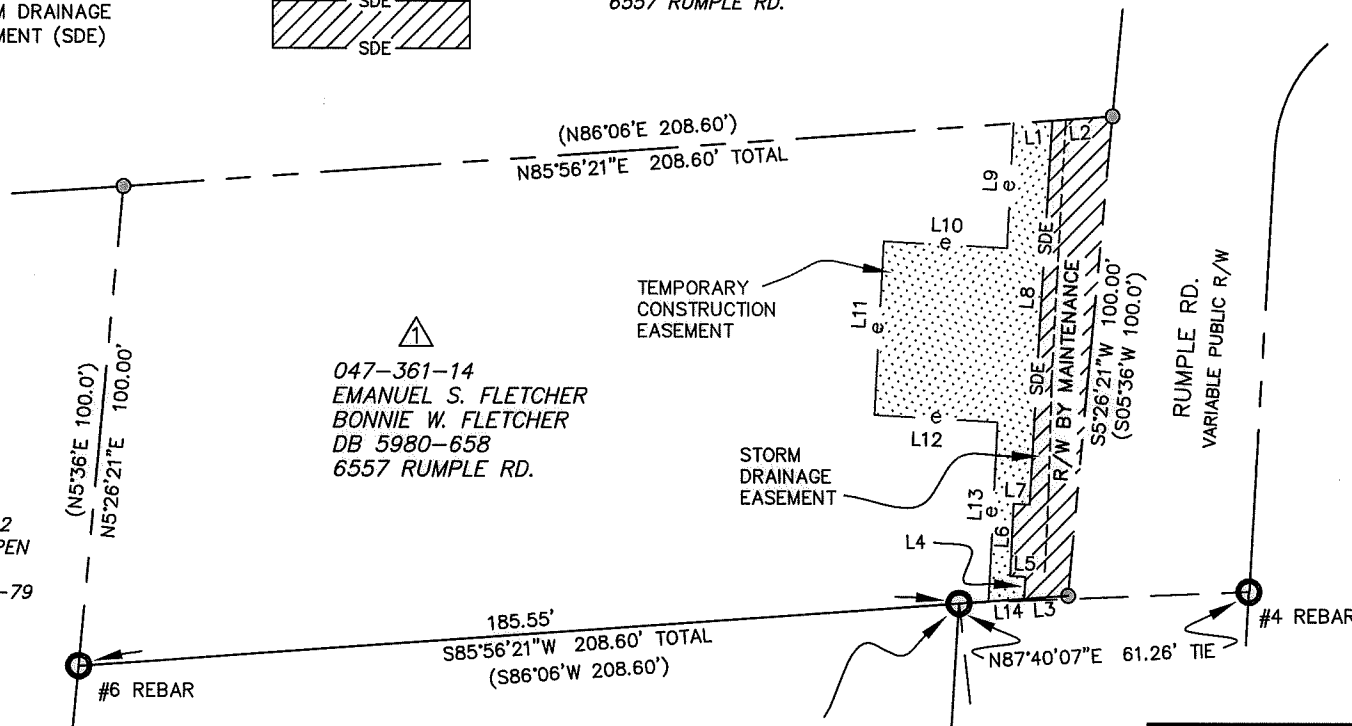
Review Officer _____ Date _____

PREPARED BY:
CITY OF CHARLOTTE
ENGINEERING & PROPERTY MANAGEMENT
600 EAST FOURTH STREET
CHARLOTTE, NC 28208
704-336-2291

047-361-21
LGI HOMES - NC, LLC
A NORTH CAROLINA LIMITED LIABILITY COMPANY
DB 29488-215
6531 RUMPLE RD.

1 1/2" PIPE ON LINE @ 23.05'
NC GRID NAD 83 (2011)
NC GRID COORDINATES
N 568158.07'
E 1466041.90'

#6 REBAR & CAP
NC GRID NAD 83 (2011)
NC GRID COORDINATES
N 567810.00'
E 1466080.99'
CGF: 0.99983896



EASEMENTS LINE TABLE		
LINE	BEARING	DIST.
1	N85°56'21"E	8.13'
2	N85°56'21"E	12.78'
3	S85°56'21"W	9.31'
4	N03°27'59"E	4.56'
5	N87°06'47"W	3.20'
6	N02°53'13"E	15.00'
7	S87°06'47"E	3.35'
8	N03°27'59"E	79.92'
9	N03°07'50"E	26.03'
10	S86°52'10"E	26.00'
11	N03°07'50"E	36.16'
12	N86°52'10"W	26.00'
13	N03°07'50"E	37.22'
14	S85°56'21"W	7.54'

NC GRID NAD 83 (2011)

CHARLOTTE		
ENGINEERING & PROPERTY MANAGEMENT DEPARTMENT		
REVISIONS	6557 RUMPLE RD. STORM WATER MAINTENANCE IMPROVEMENT PROJECT	JOB NO. SWDES00018
	OWNERS: EMANUEL S. FLETCHER BONNIE W. FLETCHER 6557 RUMPLE RD. CHARLOTTE, MECKLENBURG CO., NC	FILE NO.
SCALE 1" = 40' 		SHEET 1
DRAWN BY: JPG	CHECKED BY: SURVEY SUPVR. <i>DS</i>	OF 1
P:\acadproj\Surproj\SWATER\MAINT\RUMPLE ROAD\6557\PLATS\6557 Rumble Rd PLAT 1of1.dwg		

DB 30127-384