

H25.02 NAD 83
 N. 5522415.52
 E. 1431591.55
 GRID FACTOR = 0.9998365

NC GRID NAD 83
 N. 551647.31
 E. 1432022.45

I, DAVID H. SNIDER, CERTIFY THAT THIS PLAT WAS DRAWN UNDER MY SUPERVISION FROM AN ACTUAL FIELD SURVEY UNDER MY SUPERVISION. THAT THE DEEDS AND PLATS NOTED WERE USED AS REFERENCES. THAT THE BOUNDARIES NOT SURVEYED ARE CLEARLY INDICATED AS DRAWN FROM INFORMATION INDICATED, THAT THE RATIO OF PRECISION AS CALCULATED IS 1:10,000.
 WITNESS MY ORIGINAL SIGNATURE, REGISTRATION NUMBER AND SEAL THIS 19th DAY OF SEPT. A.D., 2000

GARY A. PETERS
 TAX CODE: 059-022-10
 DB 9648 PG 698
 MAP BOOK 3 PG 459

RODNEY D. WIKI
 TAX CODE: 059-022-11
 DB 6312 PG 470
 MAP BOOK 3 PG 459

IED D. MEACHAM
 TAX CODE: 059-022-12
 DB 9916 PG 083
 MAP BOOK 3 PG 459

DOROTHY D. GORDON
 TAX CODE: 059-022-13
 DB 5529 PG 045
 MAP BOOK 3 PG 459

GARY D. CALHOUN
 TAX CODE: 059-022-25
 DB 5378 PG 798
 MAP BOOK 3 PG 459

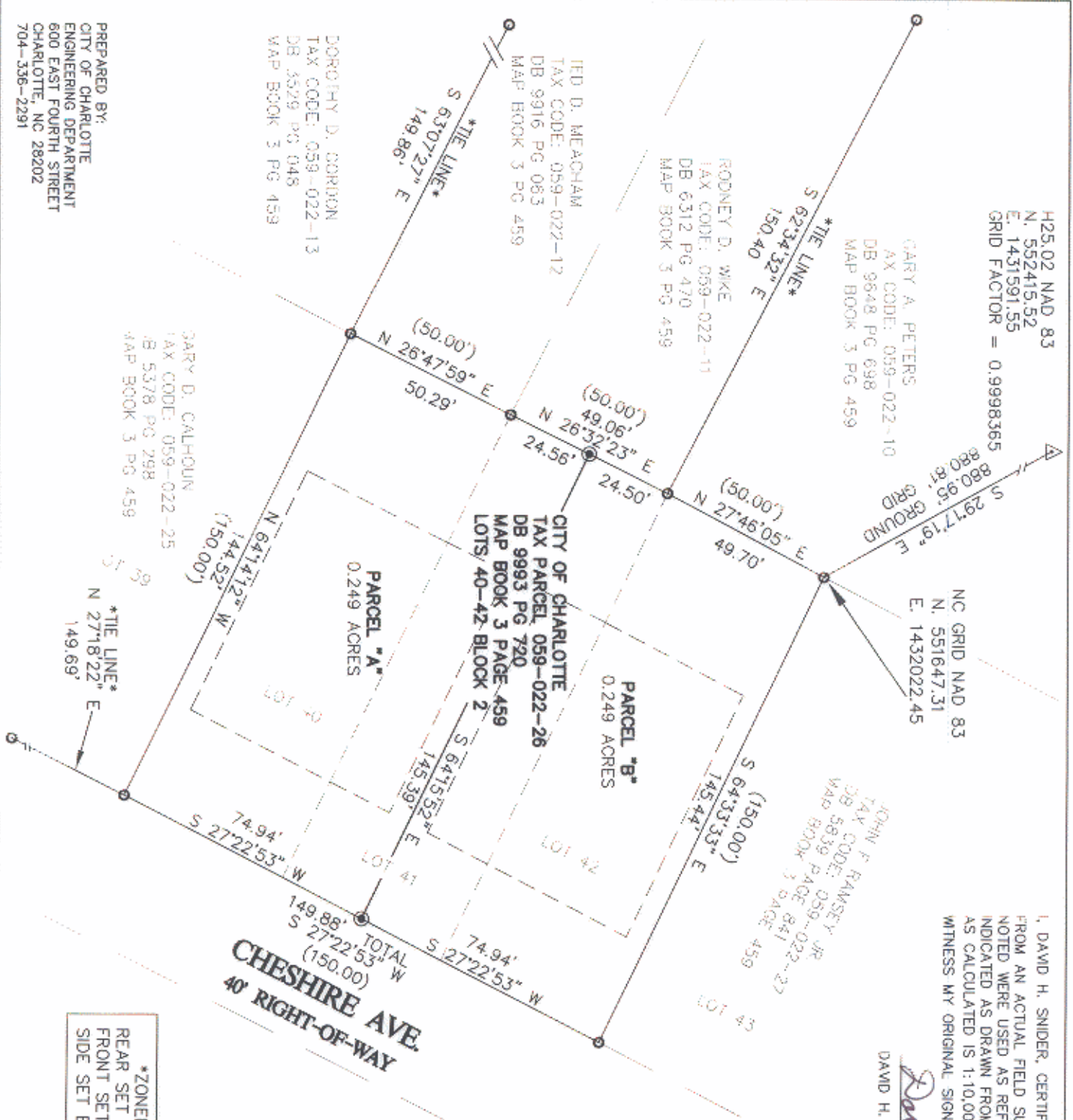
JOHN F. RAMSEY JR
 TAX CODE: 059-022-27
 DB 5639 PAGE 841
 MAP BOOK 3 PAGE 459

DAVID H. SNIDER, NC P.L.S. L-2942 DATE

State of North Carolina
 County of Mecklenburg

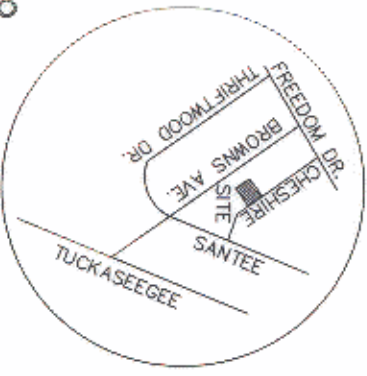
I, Review Officer of Mecklenburg County, certify that the map or plot to which this certification is affixed meets all statutory requirements for recording.

Review Officer _____ Date _____



LEGEND

- IRON PIN FOUND
- IRON PIN SET
- CITY CONTROL MONUMENT
- LINES SURVEYED
- LINES NOT SURVEYED
- VICINITY MAP N.T.S.



ZONED R-4
 REAR SET BACK = 40'
 FRONT SET BACK = 30'
 SIDE SET BACK = 6'

		REVISIONS	
		DATE	BY
CHARLOTTE ENGINEERING DEPARTMENT		RECOMBINATION SURVEY OF LOTS 41-42 BLOCK 2 MAP BOOK 3 PAGE 459	
PROPERTY OF THE CITY OF CHARLOTTE CHARLOTTE, MECKLENBURG CO., NC		JOB NO. 330-220	FILE NO. JAN #30833
DRAWN BY G.C.F.	CHECKED BY SURVEY SUPERVISOR	SHEET 1 OF 1	DATE 9-18-00

PREPARED BY:
 CITY OF CHARLOTTE
 ENGINEERING DEPARTMENT
 600 EAST FOURTH STREET
 CHARLOTTE, NC 28202
 704-336-2291