

I, JAMES E. DAVIS, CERTIFY THAT THIS PLAT WAS PREPARED UNDER MY SUPERVISION AND THAT THE PLAT WAS PREPARED FOR THE PURPOSE OF ACQUISITION AND EASEMENTS ONLY, AND IS NOT INTENDED TO BE A BOUNDARY SURVEY OF PROPERTY SHOWN.

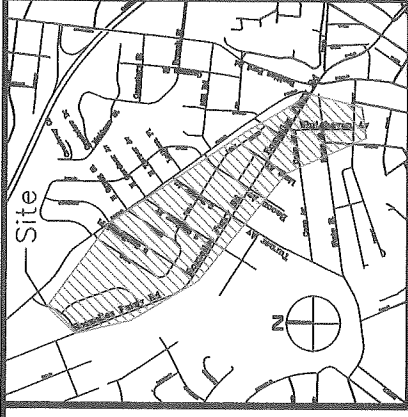
[Signature]
JAMES E. DAVIS, NC P.L.S. L-3747 DATE _____

State of North Carolina
 County of Mecklenburg

 Review Officer of Mecklenburg County, certify that the map or plat to which this certification is affixed meets all statutory requirements for recording.

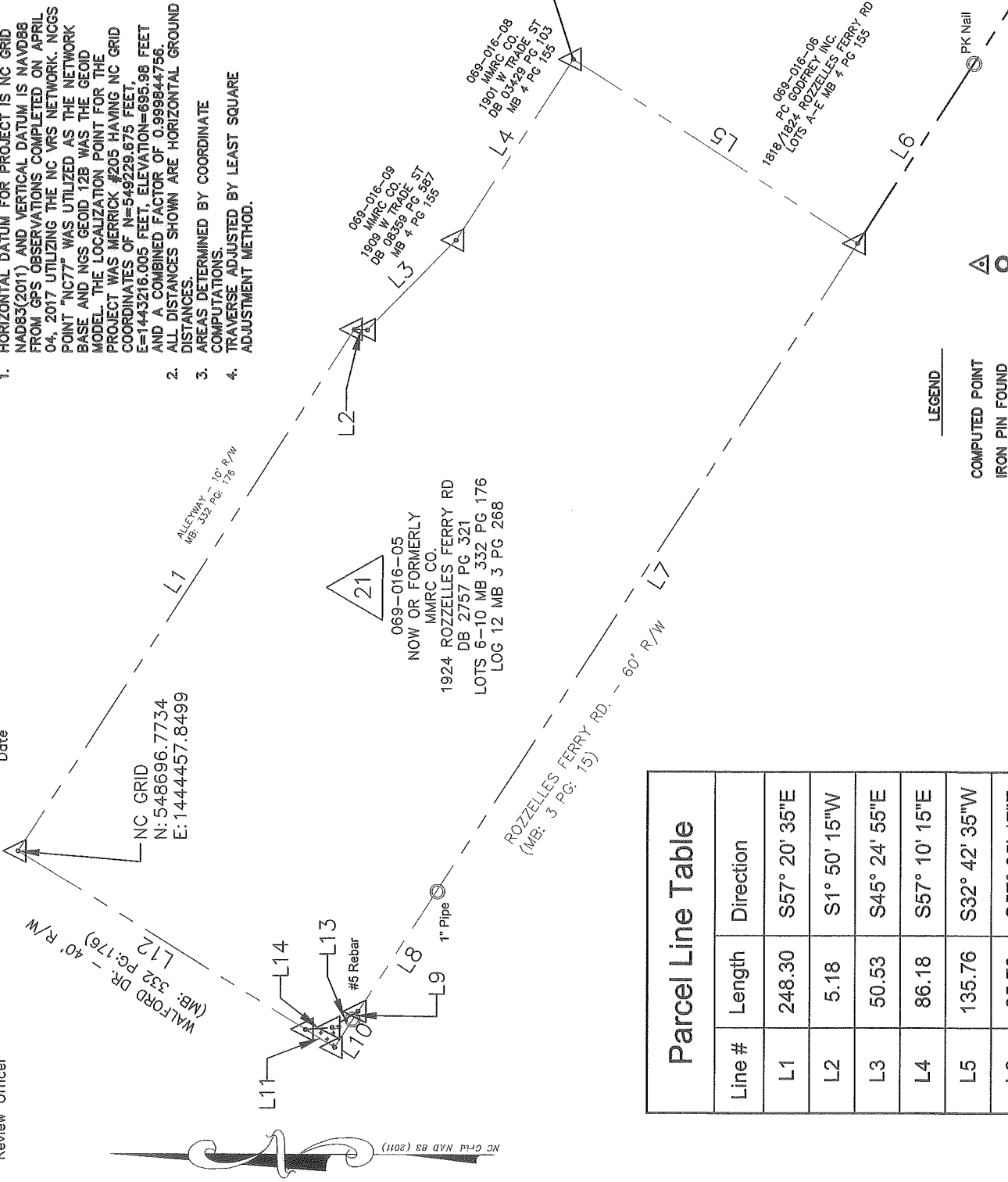
Review Officer _____

Date _____



VICINITY MAP (NOT TO SCALE)

- NOTE:**
- HORIZONTAL DATUM FOR PROJECT IS NC GRID NAD83(2011) AND VERTICAL DATUM IS NAVD88 FROM GPS OBSERVATIONS COMPLETED ON APRIL 04, 2017 UTILIZING THE NC VRS NETWORK. NCGS POINT "NC77" WAS UTILIZED AS THE NETWORK BASE AND NGS GEOID 12B WAS THE GEOID MODEL. THE LOCALIZATION POINT FOR THE PROJECT WAS MERRICK #205 HAVING NC GRID COORDINATES OF N=549229.675 FEET, E=1443216.005 FEET, ELEVATION=695.98 FEET AND A COMBINED FACTOR OF 0.999844756. ALL DISTANCES SHOWN ARE HORIZONTAL GROUND DISTANCES.
 - AREAS DETERMINED BY COORDINATE COMPUTATIONS.
 - TRAVERSE ADJUSTED BY LEAST SQUARE ADJUSTMENT METHOD.
 - AREAS DETERMINED BY COORDINATE COMPUTATIONS.
 - TRAVERSE ADJUSTED BY LEAST SQUARE ADJUSTMENT METHOD.



Line #	Length	Direction
L1	248.30	S57° 20' 35"E
L2	5.18	S1° 50' 15"W
L3	50.53	S45° 24' 55"E
L4	86.18	S57° 10' 15"E
L5	135.76	S32° 42' 35"W
L6	85.70	S57° 05' 47"E
L7	309.04	S57° 05' 47"E
L8	57.47	S57° 05' 47"E
L9	3.97	S57° 05' 47"E
L10	13.23	S57° 05' 47"E
L11	13.69	N31° 36' 25"E
L12	135.60	N31° 36' 25"E
L13	12.21	S31° 45' 58"E
L14	10.66	S4° 33' 11"E

Parcel Line Table

LEGEND

- COMPUTED POINT
- IRON PIN FOUND
- PROPERTY LINE
- TEMP. CONSTRUCTION EASEMENT

- AREAS:**
- TOTAL AREA 56,026 SQ. FT.
 - TEMP. CONSTRUCTION EASEMENT 88 SQ. FT.
 - AREA REMAINING 56,026 SQ. FT.



CHARLOTTE
 ENGINEERING & PROPERTY MANAGEMENT
**ROZZELLES FERRY ROAD
 PEDSCAPE MEDIAN
 IMPROVEMENT**

REVISIONS
 SCALE 1" = 60'
 DRAWN BY: RRH
 DATE 04/17/2018

PROPERTY ACQUISITION
 OWNER: MMRC CO.
 CHARLOTTE, MECKLENBURG CO., NC

JOB NO. 51216021
 FILE NO. -
 SHEET 1 OF 1

PREPARED BY:
MERRICK & COMPANY
 1001 MOREHEAD SQUARE DR.
 SUITE 530
 CHARLOTTE, NC 28203
 704-529-6500

[Signature] **B32890-819**

CHECKED BY _____ SURVEY SUPERVISOR