

I, JAMES E. DAVIS, CERTIFY THAT THIS PLAT WAS PREPARED UNDER MY SUPERVISION AND THAT THE PLAT WAS PREPARED FOR THE PURPOSE OF ACQUISITION AND EASEMENTS ONLY, AND IS NOT INTENDED TO BE A BOUNDARY SURVEY OF PROPERTY SHOWN.

J E Davis
 JAMES E. DAVIS, NC P.L.S. L-3747 DATE

State of North Carolina
 County of Mecklenburg

I, _____, Review Officer of Mecklenburg County, certify that the map or plat to which this certification is affixed meets all statutory requirements for recording.


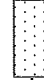
Review Officer

Date

- NOTE:**
- HORIZONTAL DATUM FOR PROJECT IS NC GRID NAD83(2011) AND VERTICAL DATUM IS NAVD88 FROM GPS OBSERVATIONS COMPLETED ON APRIL 04, 2017 UTILIZING THE NC VRS NETWORK. NCGS POINT "NC77" WAS UTILIZED AS THE NETWORK BASE AND NGS GEOID 12B WAS THE GEOD MODEL. THE LOCALIZATION POINT FOR THE PROJECT WAS MERRICK #205 HAVING NC GRID COORDINATES OF N=549229.675 FEET, E=1443216.005 FEET, ELEVATION=695.98 FEET AND A COMBINED FACTOR OF 0.999844756.
 - ALL DISTANCES SHOWN ARE HORIZONTAL GROUND DISTANCES.
 - AREAS DETERMINED BY COORDINATE COMPUTATIONS.
 - TRAVERSE ADJUSTED BY LEAST SQUARE ADJUSTMENT METHOD.

Parcel Line Table		
Line #	Length	Direction
L1	132.14	N32° 51' 35"E
L2	50.00	S57° 33' 27"E
L3	150.19	S32° 51' 11"W
L4	22.83	N57° 23' 43"W
L5	27.19	N57° 23' 43"W
L6	17.90	N32° 51' 35"E
L7	20.86	S40° 56' 45"E
L8	13.94	S1° 58' 27"W
L9	49.95	S57° 23' 43"E

LEGEND

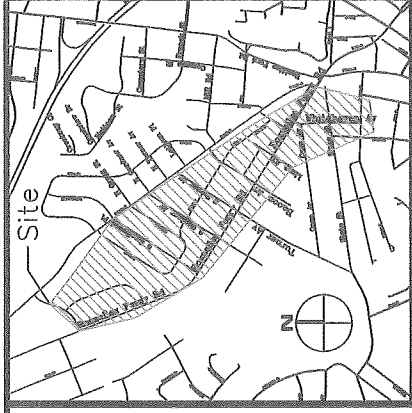
- COMPUTED POINT 
- IRON PIN FOUND 
- PROPERTY LINE 
- TEMP. CONSTRUCTION EASEMENT 

- AREAS:
- TOTAL AREA 7,507 SQ. FT.
 - TEMP. CONSTRUCTION EASEMENT 144 SQ. FT.
 - AREA REMAINING 7,507 SQ. FT.

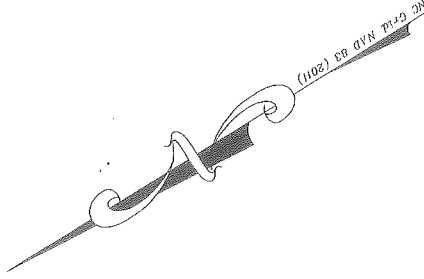
PREPARED BY:
 MERRICK & COMPANY
 1001 MOREHEAD SQUARE DR.
 SUITE 530
 CHARLOTTE, NC 28203
 704-529-6500



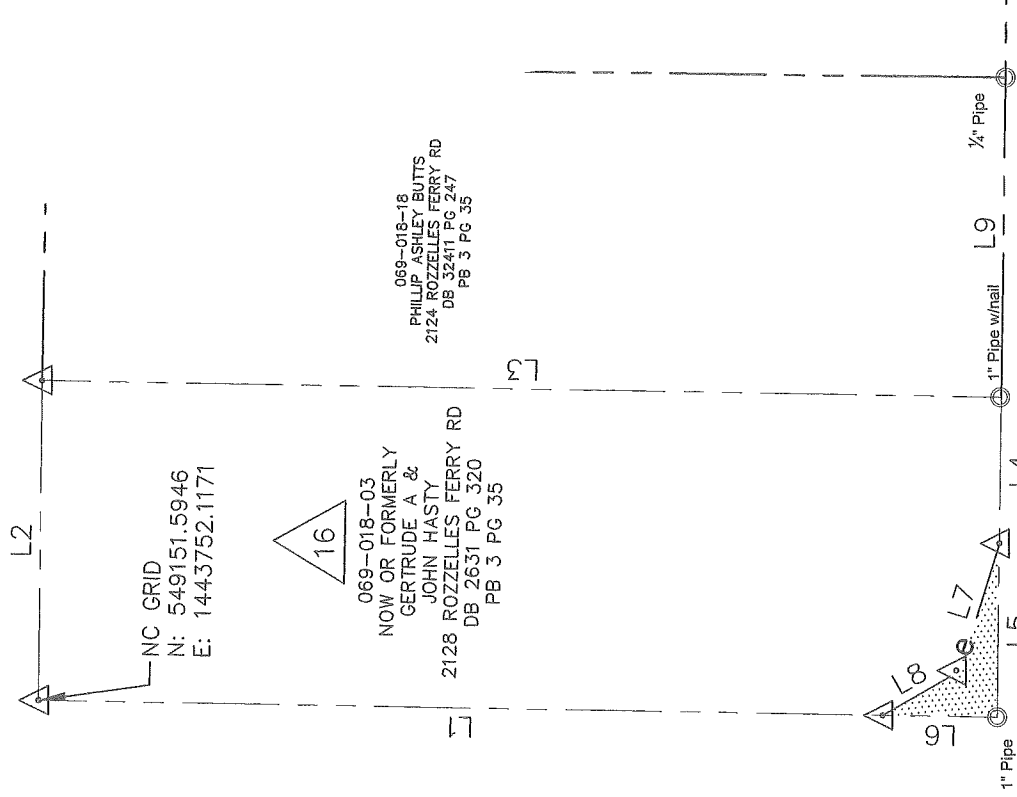
MERRICK & COMPANY



VICINITY MAP (NOT TO SCALE)



ALLEYWAY - 10' R/W
 (MB: 3 PG: 35)



BACON AVE. - 40' R/W
 (MB: 3 PG: 35)

NC GRID
 N: 549151.5946
 E: 1443752.1171

069-018-03
 NOW OR FORMERLY
 GERTRUDE A &
 JOHN HASTY
 2128 ROZZELLES FERRY RD
 DB 2631 PG 320
 PB 3 PG 35

069-018-16
 PHILLIP ASHLEY BUTTS
 2124 ROZZELLES FERRY RD
 DB 3241 PG 247
 PB 3 PG 35

ROZZELLES FERRY RD. - 60' R/W
 (MB: 3 PG: 35)



CHARLOTTE
 ENGINEERING & PROPERTY MANAGEMENT

REVISIONS

ROZZELLES FERRY
 PEDSCAPE PROJECT

REV-1

SCALE
 1" = 30'

DRAWN BY: RRH

DATE 07/30/2018

JOB NO.
 P1MES18154C

FILE NO.
 -

SHEET
 1

OF
 1

PROPERTY ACQUISITION
 OWNER: GERTRUDE A SMITH HASTY
 CHARLOTTE, MECKLENBURG CO., NC

CHECKED BY
 SURVEY SUPERVISOR

DB 33102-443