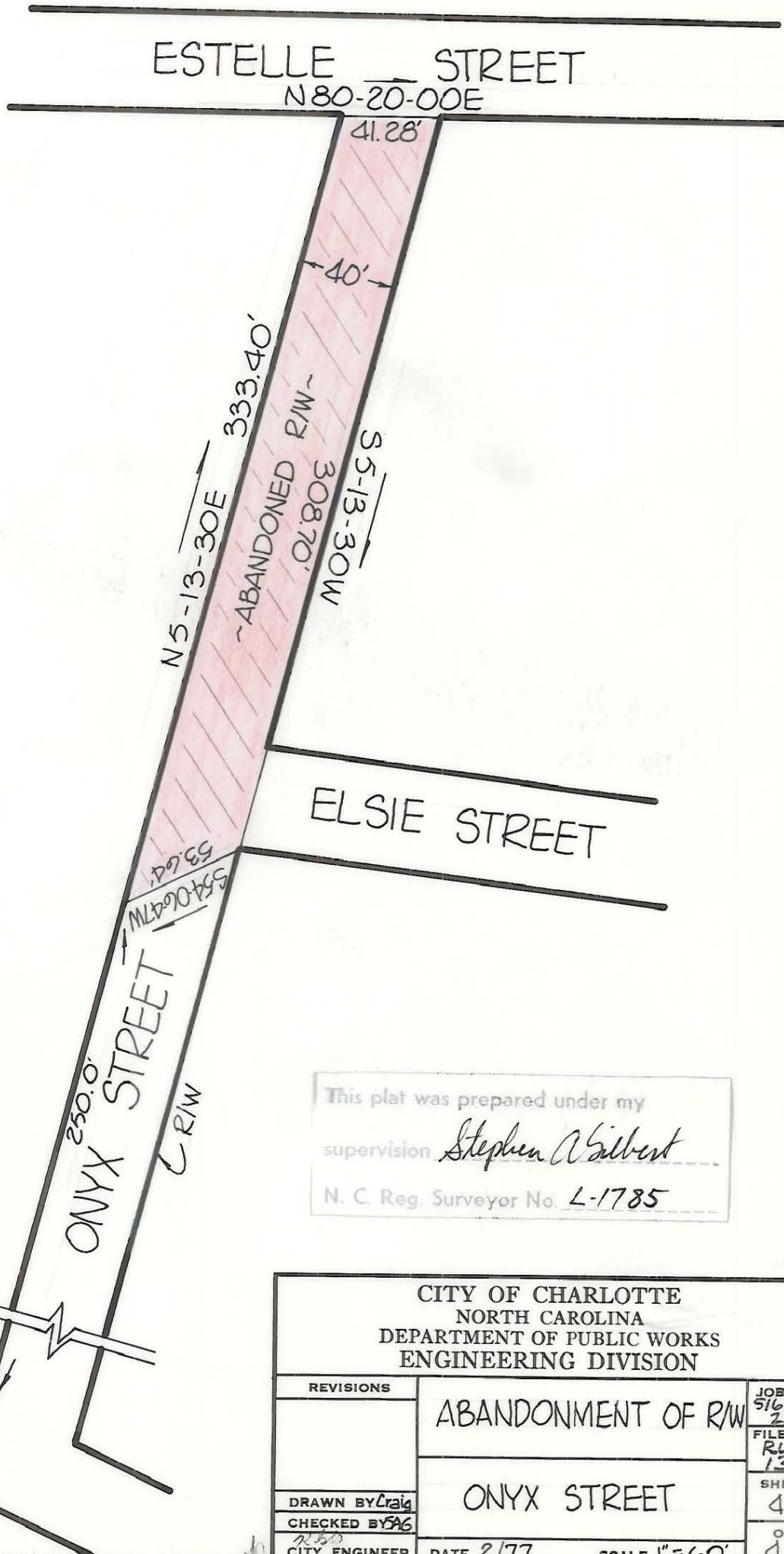


Bearings are based on M.B. 5-009



This plat was prepared under my supervision Stephen A. Gilbert
 N. C. Reg. Surveyor No. L-1785

CITY OF CHARLOTTE NORTH CAROLINA DEPARTMENT OF PUBLIC WORKS ENGINEERING DIVISION		
REVISIONS	ABANDONMENT OF R/W	JOB NO. 516-75-212
		FILE NO. R/W 136
	ONYX STREET	SHEET 4
DRAWN BY <u>Craig</u>		OF 4
CHECKED BY <u>SA6</u>		
CITY ENGINEER	DATE <u>2/77</u>	SCALE <u>1"=60'</u>