

I, JAMES E. DAVIS, CERTIFY THAT THIS PLAT WAS PREPARED UNDER MY SUPERVISION AND THAT THE PLAT WAS PREPARED FOR THE PURPOSE OF ACQUISITION AND EASEMENTS ONLY, AND IS NOT INTENDED TO BE A BOUNDARY SURVEY OF PROPERTY SHOWN.

JAMES E. DAVIS, NC P.L.S. L-3747 DATE

State of North Carolina  
County of Mecklenburg

I, \_\_\_\_\_, Review Officer of Mecklenburg County, certify that the map or plat to which this certification is affixed meets all statutory requirements for recording.

Review Officer \_\_\_\_\_

Date \_\_\_\_\_

- NOTE:**
- HORIZONTAL DATUM FOR PROJECT IS NC GRID NAD83(2011) AND VERTICAL DATUM IS NAVD86 FROM GPS OBSERVATIONS COMPLETED ON APRIL 04, 2017 UTILIZING THE NC VRS NETWORK. NCGS POINT "NC77" WAS UTILIZED AS THE NETWORK BASE AND NGS GEOID '12B' WAS THE GEOID MODEL. THE LOCALIZATION POINT FOR THE PROJECT WAS MERRICK #205 HAVING NC GRID COORDINATES OF N=549229.675 FEET, E=1443216.005 FEET, ELEVATION=695.98 FEET AND A COMBINED FACTOR OF 0.999844756. ALL DISTANCES SHOWN ARE HORIZONTAL GROUND DISTANCES.
  - AREAS DETERMINED BY COORDINATE COMPUTATIONS.
  - TRAVERSE ADJUSTED BY LEAST SQUARE ADJUSTMENT METHOD.

### Parcel Line Table

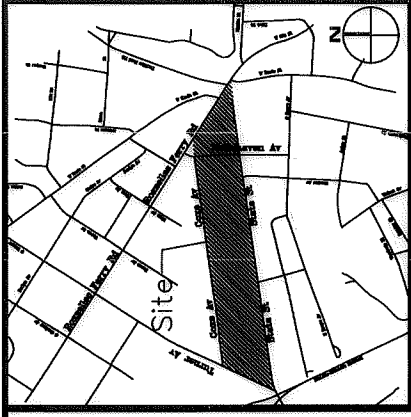
Line #	Length	Direction
L1	71.26	N81° 56' 26"E
L2	187.56	S7° 27' 44"E
L3	2.44	S7° 27' 44"E
L4	53.45	S82° 17' 33"W
L5	17.03	S82° 22' 02"W
L6	7.97	N7° 34' 23"W
L7	131.78	N7° 34' 23"W
L8	49.79	N8° 03' 13"W
L9	37.52	N85° 02' 43"E
L10	16.38	S85° 40' 16"E
L11	16.97	N83° 25' 19"E
L12	7.65	S8° 00' 36"E
L13	80.05	S82° 06' 17"W

**AREAS:**  
 1. TOTAL AREA 13,420 SQ. FT.  
 2. TEMP. CONSTRUCTION EASEMENT 220 SQ. FT.  
 3. SIDEWALK UTILITY EASEMENT 133 SQ. FT.  
 4. AREA REMAINING 13,420 SQ. FT.

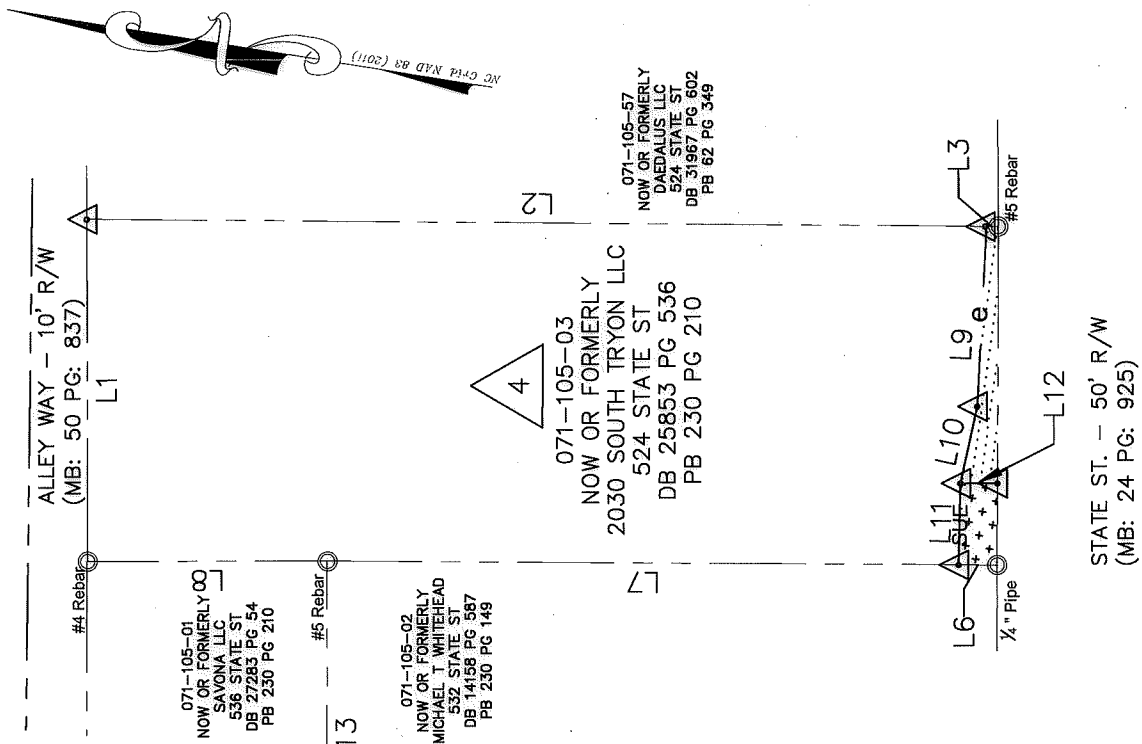
PREPARED BY:  
 MERRICK & COMPANY  
 1001 MOREHEAD SQUARE DR.  
 SUITE 530  
 CHARLOTTE, NC 28203  
 704-529-6500



DB 33499-650



VICINITY MAP (NOT TO SCALE)



### LEGEND

- COMPUTED POINT
- IRON PIN FOUND
- PROPERTY LINE
- TEMP. CONSTRUCTION EASEMENT
- SIDEWALK UTILITY EASEMENT



REVISIONS		CHARLOTTE ENGINEERING & PROPERTY MANAGEMENT
Revised ROW crests	REV-2 10/22/2018	STATE STREET PEDESTRIAN IMPROVEMENT PROJECT
SCALE 1" = 40'	40	PROPERTY ACQUISITION OWNER: 2030 SOUTH TRYON LLC
DRAWN BY: RRH.		CHARLOTTE, MECKLENBURG CO., NC
DATE: 05/31/2018	CHECKED BY	SURVEY SUPVR.
		1

JOB NO. PMS181539  
 FILE NO. -  
 SHEET 1  
 OF 1