

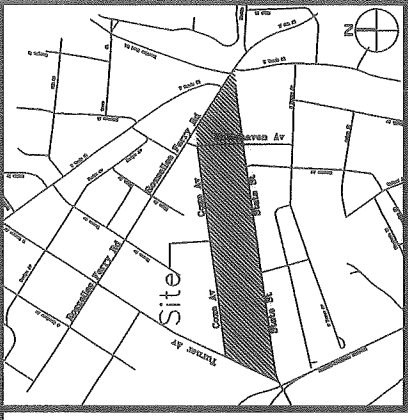
I, JAMES E. DAVIS, CERTIFY THAT THIS PLAT WAS PREPARED UNDER MY SUPERVISION AND THAT THE PLAT WAS PREPARED FOR THE PURPOSE OF ACQUISITION AND EASEMENTS ONLY, AND IS NOT INTENDED TO BE A BOUNDARY SURVEY OF PROPERTY SHOWN.

*[Signature]*  
 JAMES E. DAVIS  
 LAND SURVEYOR  
 L-3747  
 8-7-18

State of North Carolina  
 County of Mecklenburg

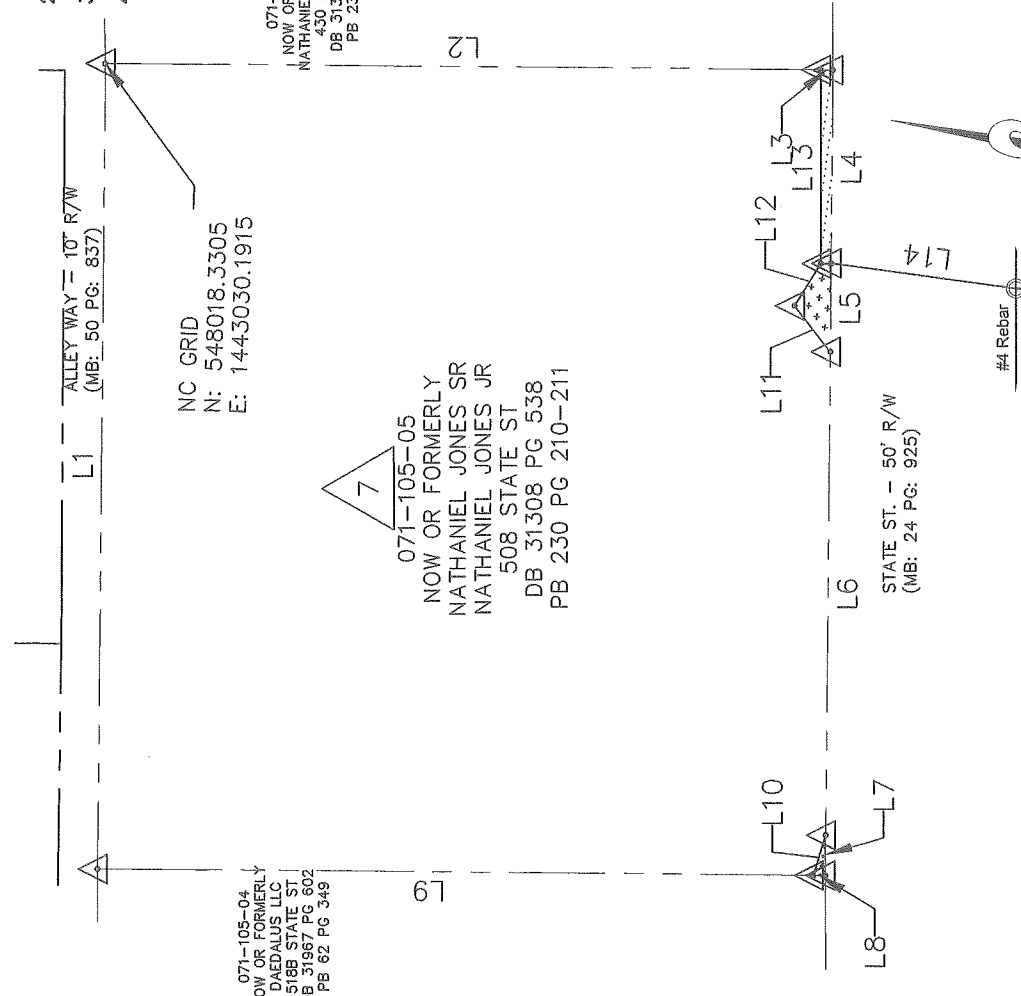
\_\_\_\_\_  
 Review Officer of Mecklenburg County, certify that the map or plat to which this certification is affixed meets all statutory requirements for recording.

Review Officer \_\_\_\_\_ Date \_\_\_\_\_



VICINITY MAP (NOT TO SCALE)

- NOTE: HORIZONTAL DATUM FOR PROJECT IS NC GRID NAD83(2011) AND VERTICAL DATUM IS NAVD88 FROM GPS OBSERVATIONS COMPLETED ON APRIL 04, 2017 UTILIZING THE NC VRS NETWORK. NCCS POINT "NC77" WAS UTILIZED AS THE NETWORK BASE AND NGS GEOID 12B WAS THE GEOD MODEL. THE LOCALIZATION POINT FOR THE PROJECT WAS MERRICK #205 HAVING NC GRID COORDINATES OF N=549229.675 FEET, E=1443216.005 FEET, ELEVATION=695.98 FEET AND A COMBINED FACTOR OF 0.999844756.
- ALL DISTANCES SHOWN ARE HORIZONTAL GROUND DISTANCES.
  - AREAS DETERMINED BY COORDINATE COMPUTATIONS.
  - TRAVERSE ADJUSTED BY LEAST SQUARE ADJUSTMENT METHOD.



071-105-04  
 NOW OR FORMERLY  
 DAVID ALUS LLC  
 518B STATE ST  
 DB 31987 PG 602  
 PB 62 PG 349

071-105-06  
 NOW OR FORMERLY  
 NATHANIEL E. JONES JR  
 430 STATE ST  
 DB 31308 PG 534  
 PB 230 PG 210

071-105-05  
 NOW OR FORMERLY  
 NATHANIEL JONES SR  
 NATHANIEL JONES JR  
 508 STATE ST  
 DB 31308 PG 538  
 PB 230 PG 210-211

Line #	Length	Direction
L1	210.00	N82° 32' 16"E
L2	186.88	S7° 27' 44"E
L3	3.12	S7° 27' 38"E
L4	50.44	S82° 32' 16"W
L5	23.00	S82° 32' 16"W
L6	126.01	S82° 32' 16"W
L7	10.55	N82° 32' 16"E
L8	3.12	S7° 27' 44"E
L9	186.88	N7° 27' 44"W
L10	11.01	S80° 58' 38"E
L11	15.25	N43° 52' 44"E
L12	13.04	S65° 32' 20"E
L13	50.47	N81° 59' 24"E
L14	48.84	S0° 17' 43"E

LEGEND

- COMPUTED POINT
- IRON PIN FOUND
- PROPERTY LINE
- TEMP. CONSTRUCTION EASEMENT
- SIDEWALK UTILITY EASEMENT

AREAS:  
 1. TOTAL AREA 39,900 SQ. FT.  
 2. TEMP. CONSTRUCTION EASEMENT 145 SQ. FT.  
 3. SIDEWALK UTILITY EASEMENT 141 SQ. FT.  
 4. AREA REMAINING 39,900 SQ. FT.

PREPARED BY:  
 MERRICK & COMPANY  
 1001 MOREHEAD SQUARE DR.  
 SUITE 530  
 CHARLOTTE, NC 28203  
 704-529-6500



DB 33105-821



CHARLOTTE  
 ENGINEERING & PROPERTY MANAGEMENT

REVISIONS	STATE STREET PEDESTRIAN IMPROVEMENT PROJECT	JOB NO. PMS181538
REV 06-07-18	PROPERTY ACQUISITION OWNERS: NATHANIEL JONES SR NATHANIEL JONES JR CHARLOTTE, MECKLENBURG CO., NC	FILE NO.
1" SCALE 1" = 50'		SHEET 1 OF 1
DRAWN BY: RRR	CHECKED BY: SURVEY SUPVR.	
DATE 05/31/2018		