

I, JAMES E. DAVIS, CERTIFY THAT THIS PLAT WAS PREPARED UNDER MY SUPERVISION AND THAT THE PLAT WAS PREPARED FOR THE PURPOSE OF ACQUISITION AND EASEMENTS ONLY, AND IS NOT INTENDED TO BE A BOUNDARY SURVEY OF PROPERTY SHOWN.

J.E. Davis
JAMES E. DAVIS, NC P.L.S. L-3747 DATE

State of North Carolina
 County of Mecklenburg

 Review Officer of Mecklenburg County, certify that the map or plat to which this certification is affixed meets all statutory requirements for recording.

Review Officer _____ Date _____

- NOTE:**
- HORIZONTAL DATUM FOR PROJECT IS NC GRID NAD83(2011) AND VERTICAL DATUM IS NAVD88 FROM GPS OBSERVATIONS COMPLETED ON APRIL 04, 2017 UTILIZING THE NC VRS NETWORK. NCGS POINT "NC77" WAS UTILIZED AS THE NETWORK BASE AND NGS GEIOD 12B WAS THE GEIOD MODEL. THE LOCALIZATION POINT FOR THE PROJECT WAS MERRICK #205 HAVING NC GRID COORDINATES OF N=549229.675 FEET, E=1443216.005 FEET, ELEVATION=695.98 FEET AND A COMBINED FACTOR OF 0.999844756.
 - ALL DISTANCES SHOWN ARE HORIZONTAL GROUND DISTANCES.
 - AREAS DETERMINED BY COORDINATE COMPUTATIONS.
 - TRAVERSE ADJUSTED BY LEAST SQUARE ADJUSTMENT METHOD.

071-105-05
 NOW OR FORMERLY
 NATHANIEL E. JONES JR
 DB 31308 PG 538
 PB 230 PG 210

Parcel Line Table		
Line #	Length	Direction
L1	69.18	S80° 42' 57"W
L2	40.95	S83° 08' 12"W
L3	180.76	S7° 27' 44"E
L4	9.24	S7° 27' 44"E
L5	13.54	N81° 36' 57"E
L6	96.57	N81° 36' 57"E
L7	3.12	S7° 27' 38"E
L8	186.88	S7° 27' 44"E
L9	19.53	N81° 59' 24"E
L10	11.31	N36° 59' 24"E
L11	26.00	N81° 59' 24"E
L12	8.94	S34° 34' 31"E
L13	39.01	N80° 31' 16"E
L14	3.48	N8° 00' 36"W
L15	14.83	N58° 47' 29"E
L16	67.75	N81° 43' 25"E

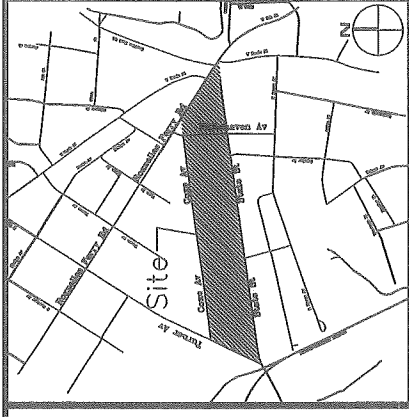
AREAS:

1. TOTAL AREA	20,977	SQ. FT.
2. TEMP. CONSTRUCTION EASEMENT	546	SQ. FT.
3. SIDEWALK UTILITY EASEMENT	86	SQ. FT.
4. AREA REMAINING	20,977	SQ. FT.

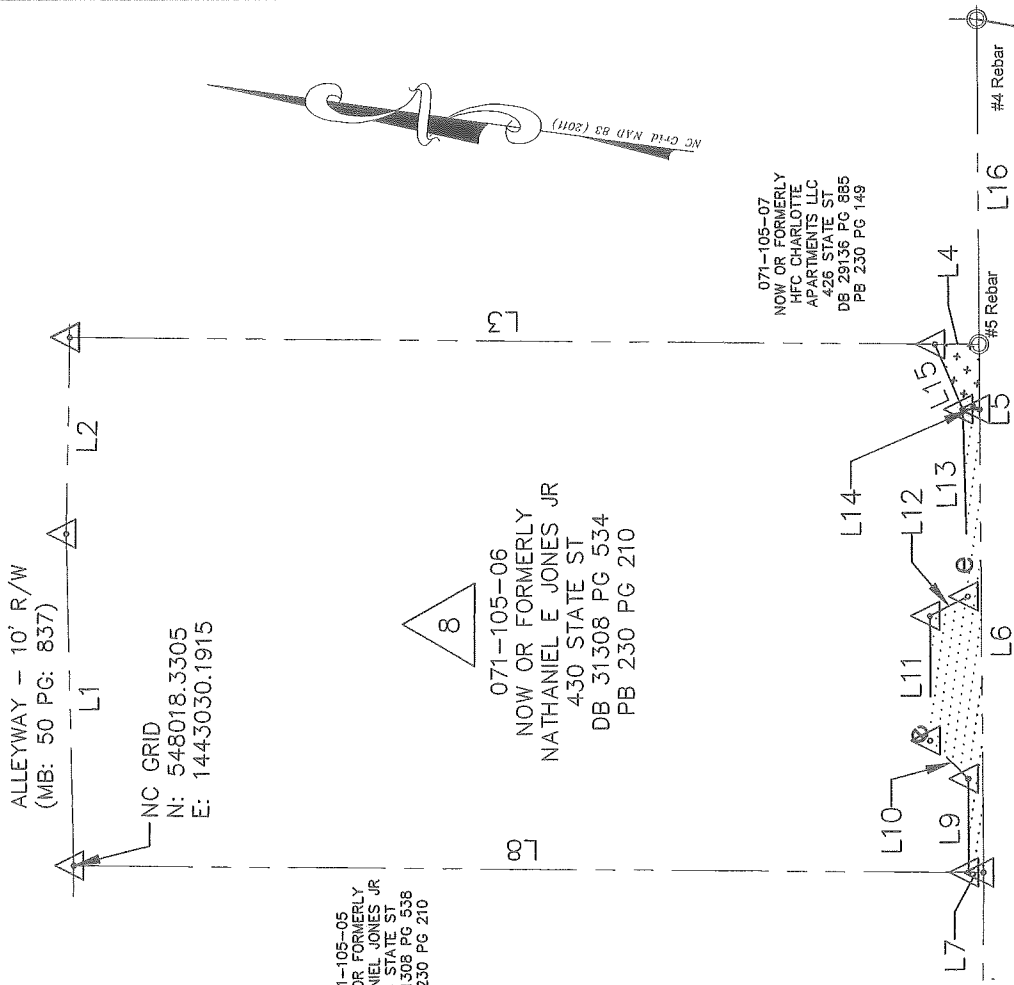
PREPARED BY:
MERRICK & COMPANY
 1001 MOREHEAD SQUARE DR.
 SUITE 530
 CHARLOTTE, NC 28203
 704-529-6500



DB 33105-826



VICINITY MAP (NOT TO SCALE)



ALLEYWAY - 10' R/W
 (MB: 50 PG: 837)

NC GRID
 N: 548018.3305
 E: 1443030.1915

071-105-06
 NOW OR FORMERLY
 NATHANIEL E. JONES JR
 430 STATE ST
 DB 31308 PG 534
 PB 230 PG 210

071-105-07
 NOW OR FORMERLY
 HFC CHARLOTTE
 APARTMENTS LLC
 426 STATE ST
 DB 29136 PG 885
 PB 230 PG 149

STATE ST. - 50' R/W
 (MB: 24 PG: 925)

LEGEND

- COMPUTED POINT
- IRON PIN FOUND
- PROPERTY LINE
- TEMP. CONSTRUCTION EASEMENT
- SIDEWALK UTILITY EASEMENT



CHARLOTTE
 ENGINEERING & PROPERTY MANAGEMENT

REVISIONS

**STATE STREET
 PEDESTRIAN
 IMPROVEMENT PROJECT**

PROPERTY ACQUISITION
 OWNER: NATHANIEL E. JONES JR
 CHARLOTTE, MECKLENBURG CO., NC

1" SCALE
 1" = 40'

DRAWN BY: RRH

CHECKED BY: SURVEY SUPVR.

DATE: 05/31/2018

JOB NO. P-MES181539
 FILE NO. -
 SHEET 1 OF 1