

I, JAMES E. DAVIS, CERTIFY THAT THIS PLAT WAS PREPARED UNDER MY SUPERVISION AND THAT THE PLAT WAS PREPARED FOR THE PURPOSE OF ACQUISITION AND EASEMENTS ONLY, AND IS NOT INTENDED TO BE A BOUNDARY SURVEY OF PROPERTY SHOWN.


JAMES E. DAVIS, NC P.L.S. L-3747 DATE _____

State of North Carolina
 County of Mecklenburg




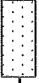
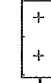
I, _____, Review Officer of Mecklenburg County, certify that the map or plat to which this certification is affixed meets all statutory requirements for recording.

Review Officer _____ Date _____

- NOTE:**
- HORIZONTAL DATUM FOR PROJECT IS NC GRID NAD83(2011) AND VERTICAL DATUM IS NAVD88 FROM GPS OBSERVATIONS COMPLETED ON APRIL 04, 2017 UTILIZING THE NC VRS NETWORK. NCGS POINT "NC77" WAS UTILIZED AS THE NETWORK BASE AND NGS GEOID 12B WAS THE GEOID MODEL. THE LOCALIZATION POINT FOR THE PROJECT WAS MERRICK #205 HAVING NC GRID COORDINATES OF N=549229.675 FEET, E=1443216.005 FEET, ELEVATION=695.98 FEET AND A COMBINED FACTOR OF 0.999844756.
 - ALL DISTANCES SHOWN ARE HORIZONTAL GROUND DISTANCES.
 - AREAS DETERMINED BY COORDINATE COMPUTATIONS.
 - TRAVERSE ADJUSTED BY LEAST SQUARE ADJUSTMENT METHOD.

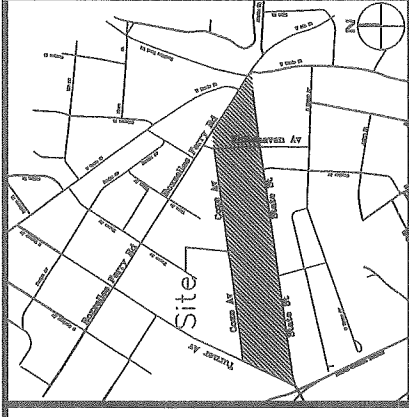
Parcel Line Table		
Line #	Length	Direction
L1	70.00	N81° 42' 50"E
L2	184.29	N7° 27' 44"W
L3	5.71	N7° 27' 44"W
L4	70.00	N81° 42' 50"E
L5	5.08	N7° 27' 42"W
L6	7.00	N7° 27' 42"W
L7	177.92	N7° 27' 44"W
L8	21.60	N81° 59' 24"E
L9	11.40	S60° 08' 07"E
L10	30.67	N81° 59' 24"E
L11	38.01	N80° 28' 57"E
L12	1.34	N83° 17' 48"E
L13	50.64	S2° 40' 45"W

LEGEND

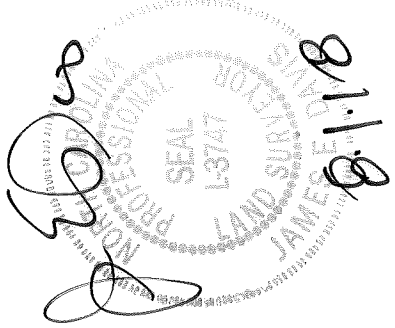
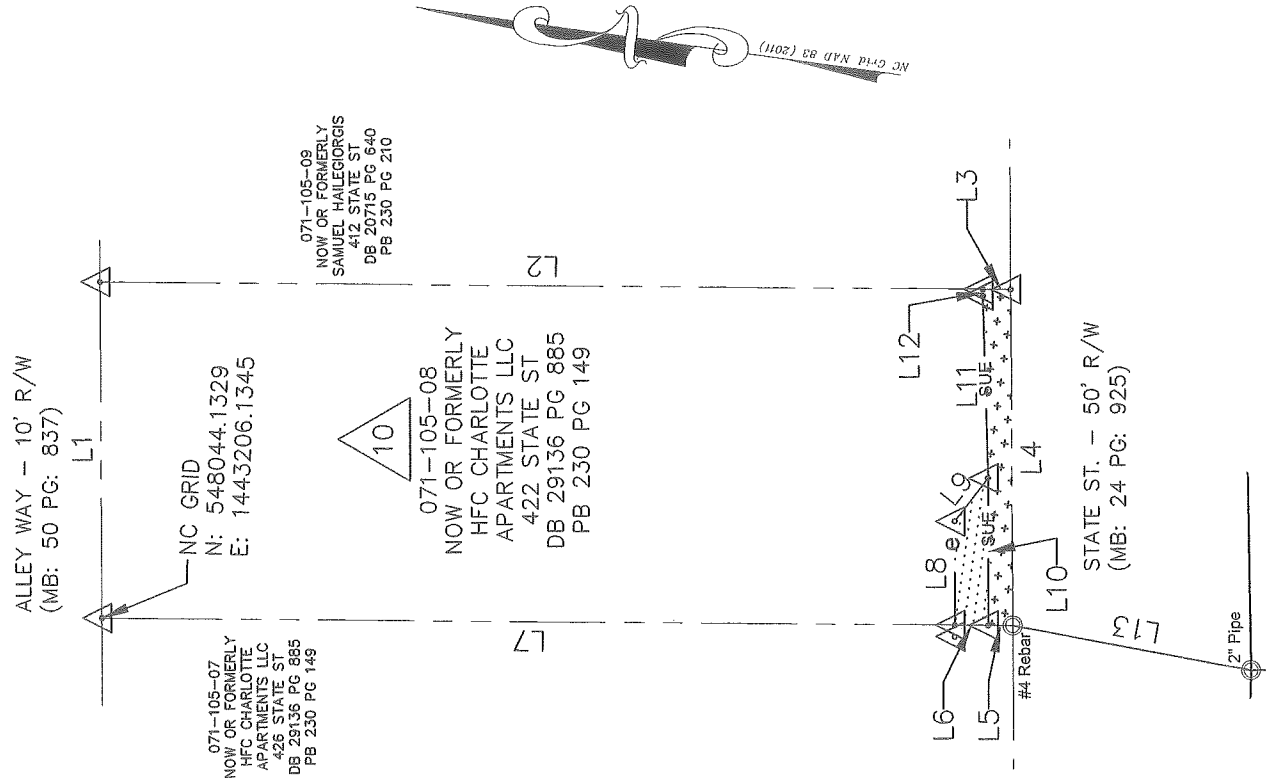
- COMPUTED POINT 
- IRON PIN FOUND 
- PROPERTY LINE 
- TEMP. CONSTRUCTION EASEMENT 
- SIDEWALK UTILITY EASEMENT 


- AREAS:**
- TOTAL AREA 13,299 SQ. FT.
 - TEMP. CONSTRUCTION EASEMENT 163 SQ. FT.
 - SIDEWALK UTILITY EASEMENT 364 SQ. FT.
 - AREA REMAINING 13,299 SQ. FT.

PREPARED BY:
MERRICK & COMPANY
 1001 MOREHEAD SQUARE DR.
 SUITE 530
 CHARLOTTE, NC 28203
 704-529-6500



VICINITY MAP (NOT TO SCALE)



 CHARLOTTE ENGINEERING & PROPERTY MANAGEMENT		JOB NO. PMES181539	FILE NO. -	SHEET 1	OF 1
STATE STREET PEDESTRIAN IMPROVEMENT PROJECT		PROPERTY ACQUISITION OWNER: HFC CHARLOTTE APARTMENTS LLC CHARLOTTE, MECKLENBURG CO., NC			
REVISIONS	SCALE 1" = 40'	DATE 05/31/2018		CHECKED BY SURVEY SUPVR.	
DRAWN BY: RRH					

DB 33137-515