

I, JAMES E. DAVIS, CERTIFY THAT THIS PLAT WAS PREPARED UNDER MY SUPERVISION AND THAT THE PLAT WAS PREPARED FOR THE PURPOSE OF ACQUISITION AND EASEMENTS ONLY, AND IS NOT INTENDED TO BE A BOUNDARY SURVEY OF PROPERTY SHOWN.

JED
JAMES E. DAVIS, NC P.L.S. L-3747 DATE

State of North Carolina
 County of Mecklenburg

I, _____, Review Officer of Mecklenburg County, certify that the map or plat to which this certification is affixed meets all statutory requirements for recording.

Review Officer _____ Date _____

- NOTE:**
- HORIZONTAL DATUM FOR PROJECT IS NC GRID NAD83(2011) AND VERTICAL DATUM IS NAVD88 FROM GPS OBSERVATIONS COMPLETED ON APRIL 04, 2017 UTILIZING THE NC VRS NETWORK. NCOS POINT "NC77" WAS UTILIZED AS THE NETWORK BASE AND NGS GEOID 12B WAS THE GEOID MODEL. THE LOCALIZATION POINT FOR THE PROJECT WAS MERRICK #205 HAVING NC GRID COORDINATES OF N=549229.675 FEET, E=1443216.005 FEET, ELEVATION=696.98 FEET AND A COMBINED FACTOR OF 0.999844756.
 - ALL DISTANCES SHOWN ARE HORIZONTAL GROUND DISTANCES.
 - AREAS DETERMINED BY COORDINATE COMPUTATIONS.
 - TRAVERSE ADJUSTED BY LEAST SQUARE ADJUSTMENT METHOD.

Parcel Line Table

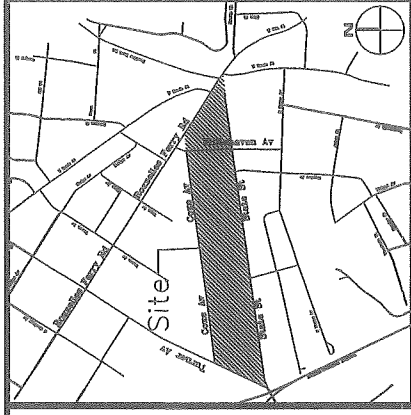
Line #	Length	Direction
L1	70.88	N81° 41' 58"E
L2	181.01	S7° 27' 44"E
L3	4.02	S7° 27' 44"E
L4	4.97	S7° 27' 44"E
L5	70.88	N81° 41' 58"E
L6	190.00	N7° 27' 44"W
L7	190.00	N7° 27' 44"W
L8	39.40	N83° 17' 48"E
L9	6.33	N42° 06' 22"E
L10	31.49	N81° 03' 38"E
L11	26.68	N80° 58' 30"E
L12	70.00	N81° 42' 50"E

LEGEND

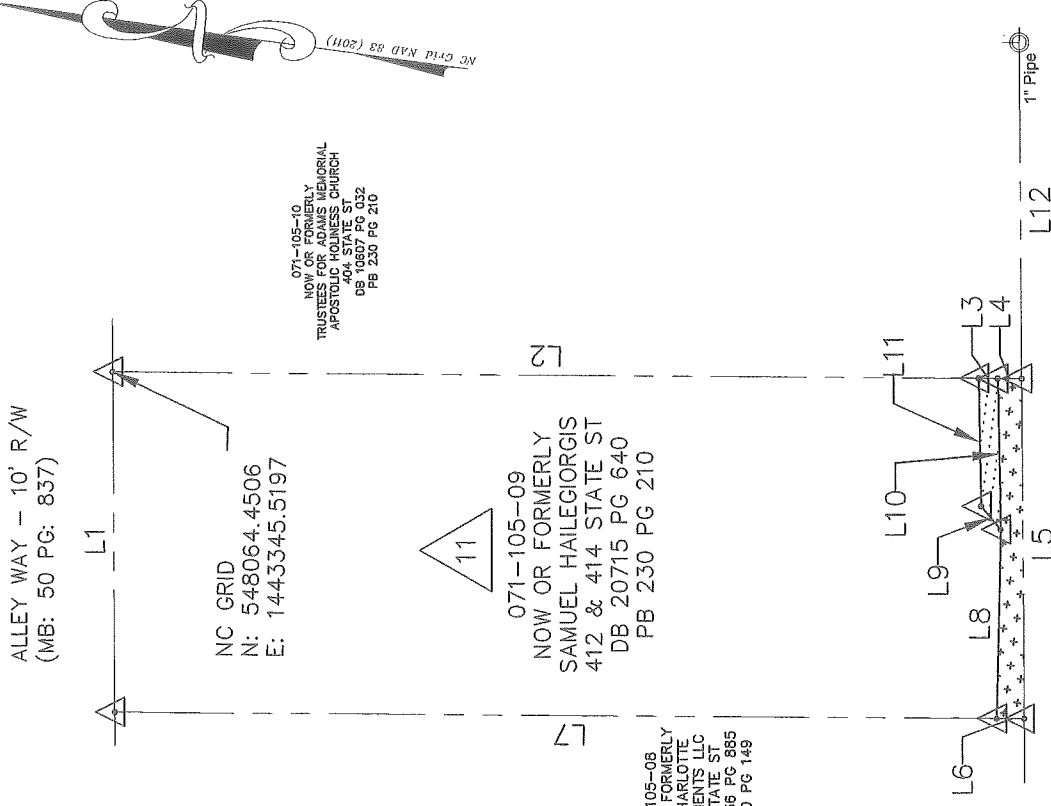
- COMPUTED POINT
- IRON PIN FOUND
- PROPERTY LINE
- TEMP. CONSTRUCTION EASEMENT
- SIDEWALK UTILITY EASEMENT

- AREAS:**
- TOTAL AREA 13,466 SQ. FT.
 - TEMP. CONSTRUCTION EASEMENT 116 SQ. FT.
 - SIDEWALK UTILITY EASEMENT 354 SQ. FT.
 - AREA REMAINING 13,466 SQ. FT.

PREPARED BY:
MERRICK & COMPANY
 1001 MOREHEAD SQUARE DR.
 SUITE 530
 CHARLOTTE, NC 28203
 704-529-6500



VICINITY MAP (NOT TO SCALE)



NC GRID
 N: 548064.4506
 E: 1443345.5197

071-105-09
 NOW OR FORMERLY
 SAMUEL HAILEGIORGIS
 412 & 414 STATE ST
 DB 20715 PG 640
 PB 230 PG 210

071-105-08
 NOW OR FORMERLY
 HFC CHARLOTTE
 APARTMENTS LLC
 422 STATE ST
 DB 29136 PG 885
 PB 230 PG 149

071-105-10
 NOW OR FORMERLY
 TRUSTEES FOR ADAMS MEMORIAL
 APOSTOLIC CHURCH
 404 STATE ST
 DB 10607 PG 032
 PB 230 PG 210



CHARLOTTE
 ENGINEERING & PROPERTY MANAGEMENT

REVISIONS

STATE STREET
 PEDESTRIAN
 IMPROVEMENT PROJECT

SCALE
 1" = 30'

DRAWN BY: RRH
 DATE: 05/31/2018

PROPERTY ACQUISITION
 OWNER: SAMUEL HAILEGIORGIS

CHARLOTTE, MECKLENBURG CO., NC
 CHECKED BY: SURVEY SUPERVISOR

JOB NO. PMS181539
 FILE NO. -
 SHEET 1
 OF 1

DB 33105-834