

I, JAMES E. DAVIS, CERTIFY THAT THIS PLAT WAS PREPARED UNDER MY SUPERVISION AND THAT THE PLAT WAS PREPARED FOR THE PURPOSE OF ACQUISITION AND EASEMENTS ONLY, AND IS NOT INTENDED TO BE A BOUNDARY SURVEY OF PROPERTY SHOWN.

*JED*  
**JAMES E. DAVIS, NC P.L.S. L-3747 DATE**

State of North Carolina  
 County of Mecklenburg

\_\_\_\_\_  
 Review Officer of Mecklenburg County, certify that the map or plat to which this certification is affixed meets all statutory requirements for recording.

Review Officer \_\_\_\_\_ Date \_\_\_\_\_

- NOTE:**
- HORIZONTAL DATUM FOR PROJECT IS NC GRID NAD83(2011) AND VERTICAL DATUM IS NAVD88 FROM GPS OBSERVATIONS COMPLETED ON APRIL 04, 2017 UTILIZING THE NC VRS NETWORK. NCGS POINT "NC77" WAS UTILIZED AS THE NETWORK BASE AND NGS GEOID 12B WAS THE GEOID MODEL. THE LOCALIZATION POINT FOR THE PROJECT WAS MERRICK #205 HAVING NC GRID COORDINATES OF N=549229.675 FEET, E=1443216.005 FEET, ELEVATION=695.98 FEET, AND A COMBINED FACTOR OF 0.999844756.
  - ALL DISTANCES SHOWN ARE HORIZONTAL GROUND DISTANCES.
  - AREAS DETERMINED BY COORDINATE COMPUTATIONS.
  - TRAVERSE ADJUSTED BY LEAST SQUARE ADJUSTMENT METHOD.

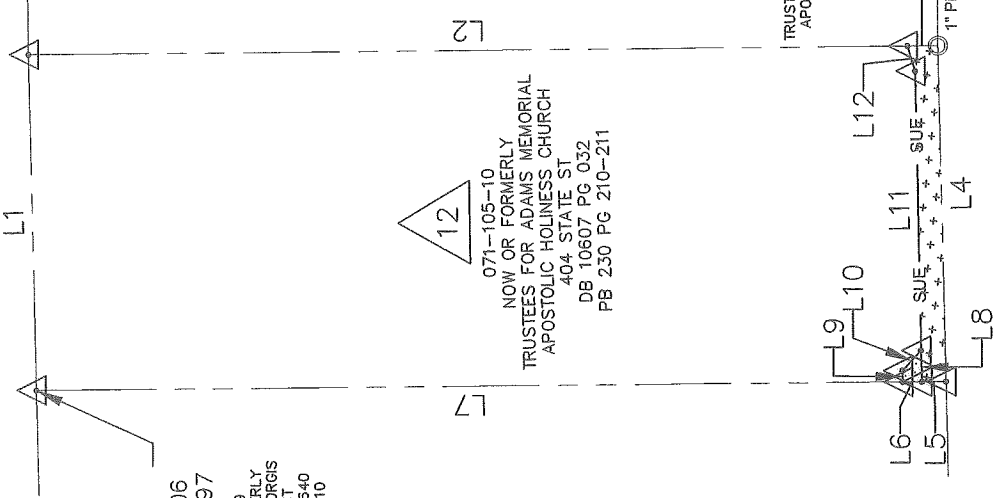
NC GRID  
 N: 548064.4506  
 E: 1443345.5197

071-105-09  
 NOW OR FORMERLY  
 SAMUEL HALEGORGIS  
 412 STATE ST  
 DB 20715 PG 640  
 PB 230 PG 210

071-105-10  
 NOW OR FORMERLY  
 TRUSTEES FOR ADAMS MEMORIAL  
 APOSTOLIC HOLINESS CHURCH  
 404 STATE ST  
 DB 10607 PG 032  
 PB 230 PG 210-211

071-105-11  
 NOW OR FORMERLY  
 TRUSTEES FOR ADAMS MEMORIAL  
 APOSTOLIC HOLINESS CHURCH  
 400 STATE ST  
 DB 3268 PG 325  
 PB 230 PG 210

ALLEY WAY - 10' R/W  
 (MB: 50 PG: 837)



**LEGEND**

- COMPUTED POINT
- IRON PIN FOUND
- PROPERTY LINE
- TEMP CONSTRUCTION EASEMENT
- SIDEWALK UTILITY EASEMENT

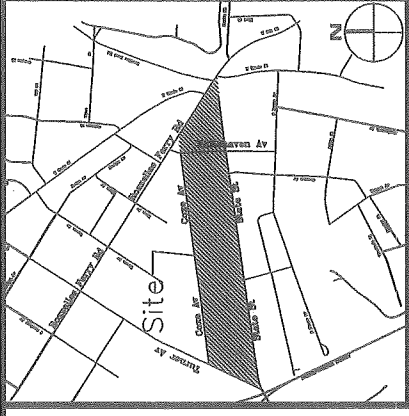
STATE ST. - 50' R/W  
 (MB: 24 PG: 925)

- AREAS:**
- TOTAL AREA 13,299 SQ. FT.
  - TEMP. CONSTRUCTION EASEMENT 18 SQ. FT.
  - SIDEWALK UTILITY EASEMENT 350 SQ. FT.
  - AREA REMAINING 13,299 SQ. FT.

PREPARED BY:  
**MERRICK & COMPANY**  
 1001 MOREHEAD SQUARE DR.  
 SUITE 530  
 CHARLOTTE, NC 28203  
 704-529-6500



*DB* 32994-209



VICINITY MAP (NOT TO SCALE)

Line #	Length	Direction
L1	70.00	S81° 42' 50"W
L2	183.66	N7° 27' 44"W
L3	6.34	N7° 27' 44"W
L4	70.00	N81° 42' 50"E
L5	4.97	S7° 27' 44"E
L6	4.02	S7° 27' 44"E
L7	181.01	S7° 27' 44"E
L8	6.51	N81° 03' 38"E
L9	2.34	N80° 58' 30"E
L10	5.71	S64° 13' 27"E
L11	58.26	N81° 53' 20"E
L12	5.46	N66° 00' 32"E
L13	55.00	N82° 32' 16"E
L14	24.26	N85° 38' 42"E



CHARLOTTE

ENGINEERING & PROPERTY MANAGEMENT

REVISIONS

STATE STREET  
 PEDESTRIAN  
 IMPROVEMENT PROJECT

SCALE  
 1" = 40'

PROPERTY ACQUISITION  
 OWNER: TRUSTEES FOR ADAMS  
 MEMORIAL APOSTOLIC  
 HOLINESS CHURCH  
 CHARLOTTE, MECKLENBURG CO., NC

DRAWN BY: RRH  
 DATE 05/31/2018  
 CHECKED BY: SURVEY SUPERVISOR

JOB NO. P/MES181539  
 FILE NO. -  
 SHEET 1  
 OF 1