

I, JAMES E. DAVIS, CERTIFY THAT THIS PLAT WAS PREPARED UNDER MY SUPERVISION AND THAT THE PLAT WAS PREPARED FOR THE PURPOSE OF ACQUISITION AND EASEMENTS ONLY, AND IS NOT INTENDED TO BE A BOUNDARY SURVEY OF PROPERTY SHOWN.

[Signature]
 JAMES E. DAVIS, NC P.L.S. L-3747 DATE

State of North Carolina
 County of Mecklenburg

[Signature] Review Officer of Mecklenburg County, certify that the map or plat to which this certification is affixed meets all statutory requirements for recording.

Review Officer _____ Date _____

- NOTE:
- HORIZONTAL DATUM FOR PROJECT IS NC GRID NAD83(2011) AND VERTICAL DATUM IS NAVD88 FROM GPS OBSERVATIONS COMPLETED ON APRIL 04, 2017 UTILIZING THE NC VRS NETWORK. NCGS POINT "NC77" WAS UTILIZED AS THE NETWORK BASE AND NGS GEOID 12B WAS THE GEOID MODEL. THE LOCALIZATION POINT FOR THE PROJECT WAS MERRICK #205 HAVING NC GRID COORDINATES OF N=549229.675 FEET, E=1443216.005 FEET, ELEVATION=695.98 FEET, AND A COMBINED FACTOR OF 0.999844756.
 - ALL DISTANCES SHOWN ARE HORIZONTAL GROUND DISTANCES.
 - AREAS DETERMINED BY COORDINATE COMPUTATIONS.
 - TRAVERSE ADJUSTED BY LEAST SQUARE ADJUSTMENT METHOD.

Parcel Line Table

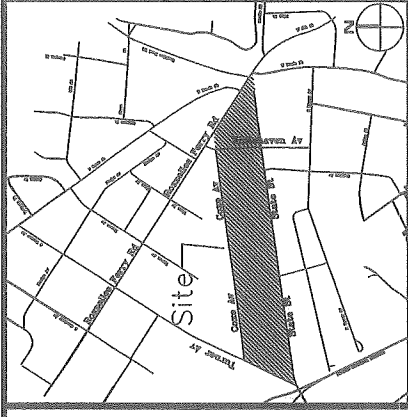
Line #	Length	Direction
L1	55.00	N82° 15' 00"E
L2	174.60	N7° 27' 45"W
L3	12.56	N7° 27' 43"W
L4	2.84	N7° 27' 56"W
L5	55.00	N82° 32' 16"E
L6	6.34	N7° 27' 44"W
L7	183.66	N7° 27' 44"W
L8	1.82	N66° 00' 32"E
L9	13.62	S85° 40' 17"E
L10	3.78	N83° 29' 26"E
L11	11.92	N81° 51' 20"E
L12	13.60	N27° 58' 54"E
L13	16.34	N81° 57' 15"E
L14	24.26	N85° 38' 42"E
L15	59.61	N81° 34' 24"E

- AREAS:
- TOTAL AREA 10,458 SQ. FT.
 - TEMP. CONSTRUCTION EASEMENT 242 SQ. FT.
 - SIDEWALK UTILITY EASEMENT 233 SQ. FT.
 - AREA REMAINING 10,458 SQ. FT.

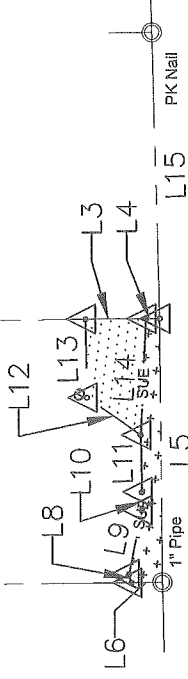
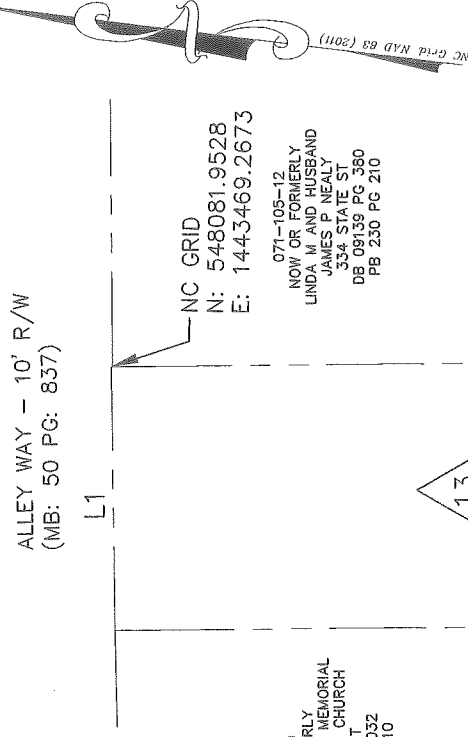
PREPARED BY:
 MERRICK & COMPANY
 1001 MOREHEAD SQUARE DR.
 SUITE 530
 CHARLOTTE, NC 28203
 704-529-6500



[Handwritten] 2B 32994-213



VICINITY MAP (NOT TO SCALE)



STATE ST. - 50' R/W
 (MB: 24 PG: 925)

LEGEND

- COMPUTED POINT
- IRON PIN FOUND
- PROPERTY LINE
- TEMP. CONSTRUCTION EASEMENT
- SIDEWALK UTILITY EASEMENT

CHARLOTTE
 ENGINEERING & PROPERTY MANAGEMENT

STATE STREET PEDESTRIAN IMPROVEMENT PROJECT

PROPERTY ACQUISITION
 OWNER: TRUSTEES OF APOSTOLIC CHURCH OF GOD OF AMERICA
 CHARLOTTE, MECKLENBURG CO., NC

REVISIONS

SCALE 1" = 40'

DRAWN BY: RRH

DATE 05/31/2018

CHECKED BY: SURVEY SUPERVISOR

JOB NO. PMS181539
 FILE NO. -
 SHEET 1 OF 1