

I, JAMES E. DAVIS, CERTIFY THAT THIS PLAT WAS PREPARED UNDER MY SUPERVISION AND THAT THE PLAT WAS PREPARED FOR THE PURPOSE OF ACQUISITION AND EASEMENTS ONLY, AND IS NOT INTENDED TO BE A BOUNDARY SURVEY OF PROPERTY SHOWN.


JAMES E. DAVIS, NC P.L.S. L-3747 DATE _____

State of North Carolina
 County of Mecklenburg

 Review Officer of
 Mecklenburg County, certify that the map or plat to which
 this certification is affixed meets all statutory requirements
 for recording.

Review Officer _____ Date _____

- NOTE:**
- HORIZONTAL DATUM FOR PROJECT IS NC GRID NAD83(2011) AND VERTICAL DATUM IS NAVD88 FROM GPS OBSERVATIONS COMPLETED ON APRIL 04, 2017 UTILIZING THE NC VRS NETWORK. NCGS POINT "NC77" WAS UTILIZED AS THE NETWORK BASE AND NGS GEOID 12B WAS THE GEOID MODEL. THE LOCALIZATION POINT FOR THE PROJECT WAS MERRICK #205 HAVING NC GRID COORDINATES OF N=549229.675 FEET, E=1443216.005 FEET, ELEVATION=695.98 FEET AND A COMBINED FACTOR OF 0.999844756.
 - ALL DISTANCES SHOWN ARE HORIZONTAL GROUND DISTANCES
 - AREAS DETERMINED BY COORDINATE COMPUTATIONS.
 - TRAVERSE ADJUSTED BY LEAST SQUARE ADJUSTMENT METHOD.

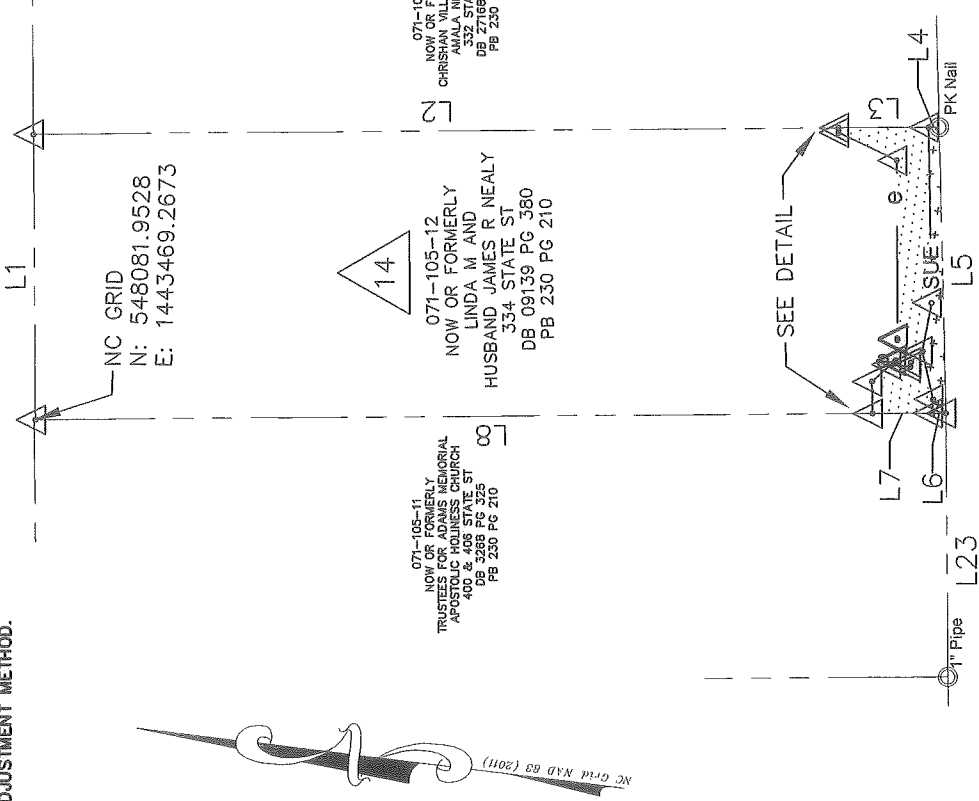
ALLEY WAY - 10' R/W
 (MB: 50 PG: 837)

NC GRID
 N: 548081.9528
 E: 1443469.2673

071-105-11
 NOW OR FORMERLY
 TRUSTEES FOR JAMES MEMORIAL
 APOSTOLIC HOLINESS CHURCH
 400 & 408 STATE ST
 DB 230 PG 325
 PB 230 PG 210

071-105-12
 NOW OR FORMERLY
 LINDA M AND
 HUSBAND, JAMES R NEALY
 334 STATE ST
 DB 09139 PG 380
 PB 230 PG 210

071-105-13
 NOW OR FORMERLY
 CHRISTIAN MALLIKYAN &
 ANAIA NICHOLAS
 332 STATE ST
 DB 27166 PG 891
 PB 230 PG 210



STATE ST. - 50' R/W
 (MB: 24 PG: 925)

LEGEND

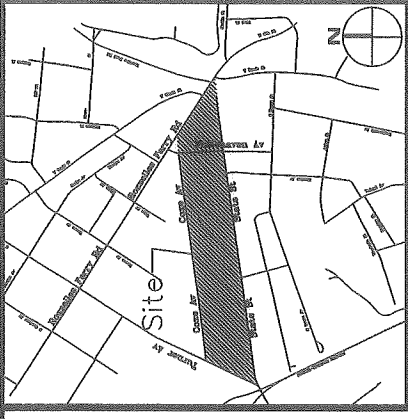
- COMPUTED POINT
- IRON PIN FOUND
- PROPERTY LINE
- TEMP. CONSTRUCTION EASEMENT
- SIDEWALK UTILITY EASEMENT

- AREAS:**
- TOTAL AREA 11,285 SQ. FT.
 - TEMP. CONSTRUCTION EASEMENT 493 SQ. FT.
 - SIDEWALK UTILITY EASEMENT 168 SQ. FT.
 - AREA REMAINING 11,285 SQ. FT.

PREPARED BY:
MERRICK & COMPANY
 1001 MOREHEAD SQUARE DR.
 SUITE 530
 CHARLOTTE, NC 28203
 704-529-6500

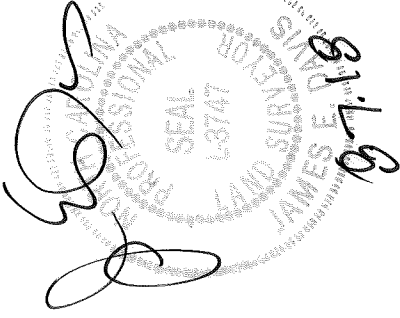


DB 33137-423



VICINITY MAP (NOT TO SCALE)

Parcel Line Table		
Line #	Length	Direction
L1	59.50	N82° 32' 16"E
L2	167.99	S7° 29' 32"E
L3	18.75	S7° 29' 32"E
L4	2.26	S7° 28' 59"E
L5	59.61	S81° 34' 24"W
L6	2.84	N7° 27' 56"W
L7	12.56	N7° 27' 43"W
L8	174.60	N7° 27' 45"W
L9	6.66	N81° 57' 15"E
L10	5.36	S49° 12' 05"E
L11	4.09	S0° 11' 02"W
L12	0.93	S89° 45' 50"E
L13	3.20	N0° 11' 00"E
L14	4.25	N87° 45' 54"E
L15	0.37	N82° 44' 21"E
L16	37.08	N82° 44' 21"E
L17	13.42	N18° 31' 09"E
L18	0.99	N81° 57' 15"E
L19	2.93	N85° 38' 42"E
L20	10.26	N70° 07' 03"E
L21	10.26	S86° 12' 32"E
L22	36.60	N81° 57' 15"E
L23	55.00	N82° 32' 16"E



CHARLOTTE
 ENGINEERING & PROPERTY MANAGEMENT

REVISIONS

REV 08-07-18

SCALE 1" = 40'

DRAWN BY: RRH

DATE 05/31/2018

STATE STREET
 PEDESTRIAN
 IMPROVEMENT PROJECT

PROPERTY ACQUISITION
 OWNER: LINDA M & HUSBAND
 JAMES R NEALY

CHARLOTTE, MECKLENBURG CO., NC

JOB NO. PMES181539

FILE NO.

SHEET 1

OF 2

CHECKED BY SURVEY SUPERV.

I, JAMES E. DAVIS, CERTIFY THAT THIS PLAT WAS PREPARED UNDER MY SUPERVISION AND THAT THE PLAT WAS PREPARED FOR THE PURPOSE OF ACQUISITION AND EASEMENTS ONLY, AND IS NOT INTENDED TO BE A BOUNDARY SURVEY OF PROPERTY SHOWN.

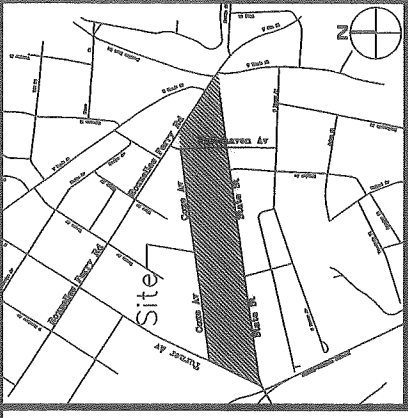
J.E. Davis
JAMES E. DAVIS, NC P.L.S. L-3747 DATE _____

State of North Carolina
 County of Mecklenburg

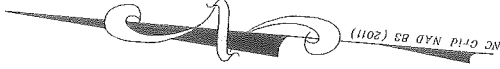
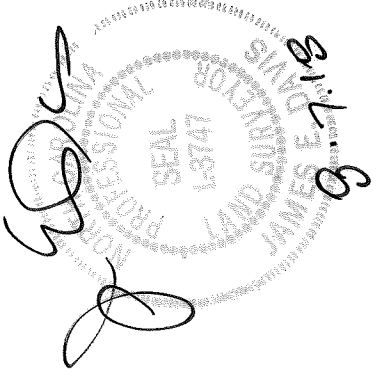
_____, Review Officer of Mecklenburg County, certify that the map or plat to which this certification is affixed meets all statutory requirements for recording.

Review Officer _____ Date _____

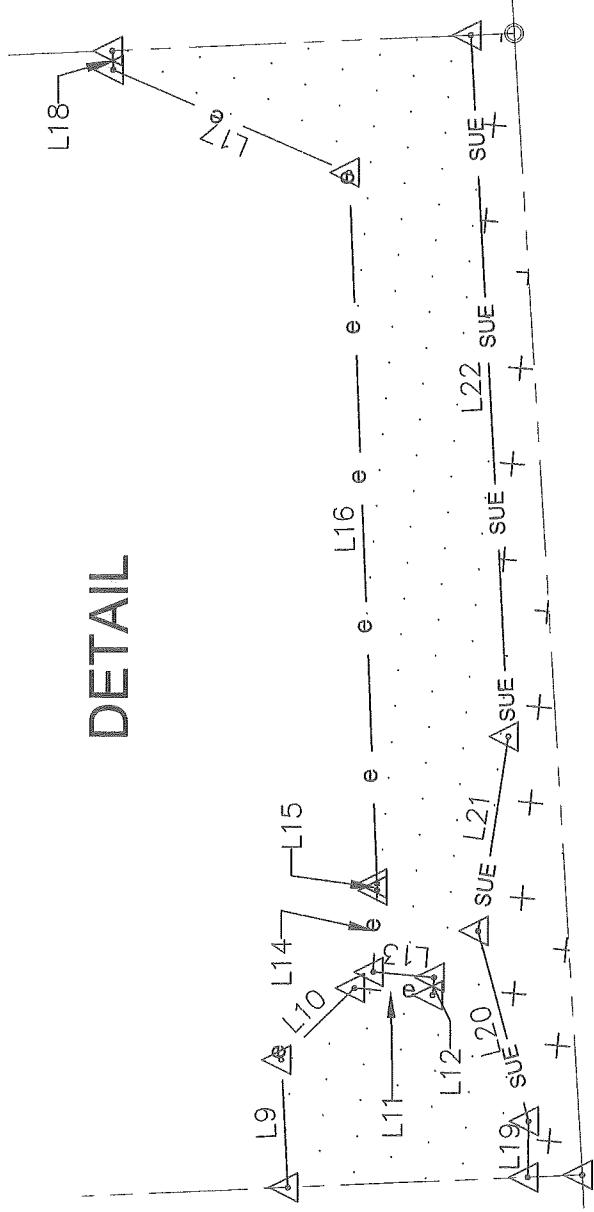
- NOTE:**
- HORIZONTAL DATUM FOR PROJECT IS NC GRID NAD83(2011) AND VERTICAL DATUM IS NAVD88 FROM GPS OBSERVATIONS COMPLETED ON APRIL 04, 2017 UTILIZING THE NC VRS NETWORK. NCGS POINT "NC77" WAS UTILIZED AS THE NETWORK BASE AND NGS GEOID 12B WAS THE GEOID MODEL. THE LOCALIZATION POINT FOR THE PROJECT WAS MERRICK #205 HAVING NC GRID COORDINATES OF N=549229.675 FEET, E=1443216.005 FEET, ELEVATION=695.98 FEET AND A COMBINED FACTOR OF 0.999844756. ALL DISTANCES SHOWN ARE HORIZONTAL GROUND DISTANCES.
 - AREAS DETERMINED BY COORDINATE COMPUTATIONS.
 - TRAVERSE ADJUSTED BY LEAST SQUARE ADJUSTMENT METHOD.



VICINITY MAP (NOT TO SCALE)



DETAIL



STATE ST. - 50' R/W
 (MB: 24 PG: 925)

LEGEND

- COMPUTED POINT
- IRON PIN FOUND
- PROPERTY LINE
- TEMP. CONSTRUCTION EASEMENT
- SIDEWALK UTILITY EASEMENT

PREPARED BY:
MERRICK & COMPANY
 1001 MOREHEAD SQUARE DR.
 SUITE 530
 CHARLOTTE, NC 28203
 704-529-6500



DB 33137-423

CHARLOTTE ENGINEERING & PROPERTY MANAGEMENT		JOB NO. PMES161539	SHEET 2
STATE STREET PEDESTRIAN IMPROVEMENT PROJECT		FILE NO. -	OF 2
REVISIONS	OWNER: LINDA M & HUSBAND JAMES R NEALY CHARLOTTE, MECKLENBURG CO., NC		
REV 08-07-18	CHECKED BY: RRR	DATE: 05/31/2018	SURVEY SUPERV.
SCALE 1" = 10'			