

I, JAMES E. DAVIS, CERTIFY THAT THIS PLAT WAS PREPARED UNDER MY SUPERVISION AND THAT THE PLAT WAS PREPARED FOR THE PURPOSE OF ACQUISITION AND EASEMENTS ONLY, AND IS NOT INTENDED TO BE A BOUNDARY SURVEY OF PROPERTY SHOWN.

J.E. Davis
JAMES E. DAVIS, NC P.L.S. L-3747 DATE

State of North Carolina
 County of Mecklenburg

I, _____, Review Officer of Mecklenburg County, certify that the map or plat to which this certification is affixed meets all statutory requirements for recording.

Review Officer _____ Date _____

- NOTE:**
- HORIZONTAL DATUM FOR PROJECT IS NC GRID NAD83(2011) AND VERTICAL DATUM IS NAVD88 FROM GPS OBSERVATIONS COMPLETED ON APRIL 04, 2017 UTILIZING THE NC VRS NETWORK. NCGS POINT "NC77" WAS UTILIZED AS THE NETWORK BASE AND NGS GEOID 12B WAS THE GEOID MODEL. THE LOCALIZATION POINT FOR THE PROJECT WAS MERRICK #205 HAVING NC GRID COORDINATES OF N=549229.675 FEET, E=1443216.005 FEET, ELEVATION=695.98 FEET AND A COMBINED FACTOR OF 0.999844756.
 - ALL DISTANCES SHOWN ARE HORIZONTAL GROUND DISTANCES.
 - AREAS DETERMINED BY COORDINATE COMPUTATIONS.
 - TRAVERSE ADJUSTED BY LEAST SQUARE ADJUSTMENT METHOD.

071-105-14
 NOW OR FORMERLY
 GREGORY MOTLEY AND WIFE
 TRACEY C. MOTLEY
 326 STATE ST
 DB 08392 PG 061
 PB 230 PG 210

LEGEND

- COMPUTED POINT
- IRON PIN FOUND
- PROPERTY LINE
- TEMP. CONSTRUCTION EASEMENT
- SIDEWALK UTILITY EASEMENT

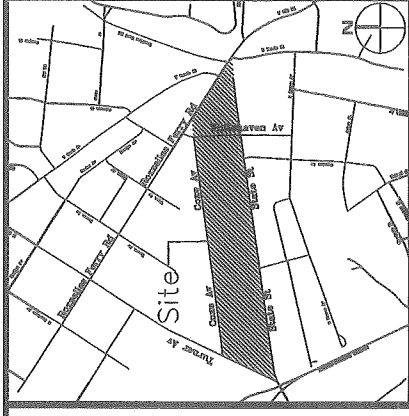
AREAS:

	SQ. FT.	SQ. FT.	SQ. FT.
1. TOTAL AREA	31,724	956	
2. TEMP. CONSTRUCTION EASEMENT		70	
3. SIDEWALK UTILITY EASEMENT	31,724		
4. AREA REMAINING			

PREPARED BY:
MERRICK & COMPANY
 1001 MOREHEAD SQUARE DR.
 SUITE 530
 CHARLOTTE, NC 28203
 704-529-6500



DB 33105-838



VICINITY MAP (NOT TO SCALE)

ALLEY WAY - 10' R/W
 (MB: 50 PG: 837)

NC GRID
 N: 548139.5538
 E: 1443868.3358

L9
 071-105-16
 NOW OR FORMERLY
 GREGORY MOTLEY AND WIFE
 TRACEY C. MOTLEY
 318 STATE ST
 DB 08477 PG 303
 PB 230 PG 149

L18
 071-105-17
 NOW OR FORMERLY
 CVJA LLC
 306-312 STATE ST
 DB 32581 PG 123
 PB 230 PG 149

L3
 071-105-19
 NOW OR FORMERLY
 STAGE LEFT PROPERTIES LLC
 300 STATE ST
 DB 29801 PG 602
 PB 230 PG 149

STATE ST. - 50' R/W
 (MB: 24 PG: 925)



CHARLOTTE
 ENGINEERING & PROPERTY MANAGEMENT

STATE STREET
 PEDESTRIAN
 IMPROVEMENT PROJECT
 PROPERTY ACQUISITION
 OWNER: CVJA LLC
 CHARLOTTE, MECKLENBURG CO., NC

REV-1	SCALE 1" = 40'	DATE 07/30/2018
REVISIONS	DRAWN BY: RRH	CHECKED BY: SURVEY SUPVR.
JOB NO. P/MES181539	FILE NO. -	SHEET 1
		OF 2

I, JAMES E. DAVIS, CERTIFY THAT THIS PLAT WAS PREPARED UNDER MY SUPERVISION AND THAT THE PLAT WAS PREPARED FOR THE PURPOSE OF ACQUISITION AND EASEMENTS ONLY, AND IS NOT INTENDED TO BE A BOUNDARY SURVEY OF PROPERTY SHOWN.


JAMES E. DAVIS, NC P.L.S. L-3747 DATE _____

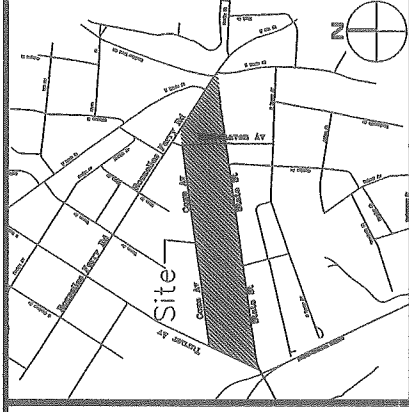
State of North Carolina
 County of Mecklenburg

I, _____, Review Officer of Mecklenburg County, certify that the map or plat to which this certification is affixed meets all statutory requirements for recording.

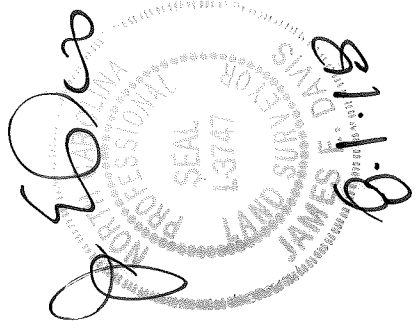
Review Officer _____ Date _____

- NOTE:**
- HORIZONTAL DATUM FOR PROJECT IS NC GRID NAD83(2011) AND VERTICAL DATUM IS NAVD88 FROM GPS OBSERVATIONS COMPLETED ON APRIL 04, 2017 UTILIZING THE NC VRS NETWORK. NCGS POINT "NC77" WAS UTILIZED AS THE NETWORK BASE AND NGS GEOID 12B WAS THE GEOID MODEL. THE LOCALIZATION POINT FOR THE PROJECT WAS MERRICK #205 HAVING NC GRID COORDINATES OF N=549229.675 FEET, E=1443216.005 FEET, ELEVATION=695.98 FEET AND A COMBINED FACTOR OF 0.999844756. ALL DISTANCES SHOWN ARE HORIZONTAL GROUND DISTANCES.
 - AREAS DETERMINED BY COORDINATE COMPUTATIONS.
 - TRAVERSE ADJUSTED BY LEAST SQUARE ADJUSTMENT METHOD.

Parcel Line Table		
Line #	Length	Direction
L1	208.29	N81° 16' 46"E
L2	186.04	S7° 58' 06"E
L3	3.05	S7° 58' 06"E
L4	15.13	S81° 46' 37"W
L5	17.00	S81° 46' 37"W
L6	107.79	S81° 46' 37"W
L7	11.11	N7° 27' 52"W
L8	97.26	N7° 27' 52"W
L9	69.83	S82° 32' 17"W
L10	78.00	N7° 35' 15"W
L11	2.17	N42° 39' 53"E
L12	20.00	N81° 57' 15"E
L13	12.73	S53° 02' 45"E
L14	19.00	N81° 57' 15"E
L15	10.00	N8° 02' 45"W
L16	19.00	N81° 57' 15"E
L17	6.00	S8° 02' 45"E
L18	26.00	N81° 57' 15"E
L19	4.24	S53° 02' 45"E
L20	10.05	N76° 14' 37"E
L21	17.12	N88° 39' 51"E
L22	15.13	N81° 57' 15"E
L23	69.60	N81° 49' 57"E
L23	5.15	N8° 02' 45"W
L24	3.10	S8° 02' 45"E



VICINITY MAP (NOT TO SCALE)



PREPARED BY:
MERRICK & COMPANY
 1001 MOREHEAD SQUARE DR.
 SUITE 530
 CHARLOTTE, NC 28203
 704-529-6500



DB 33105-838



CHARLOTTE
 ENGINEERING & PROPERTY MANAGEMENT

18

REVISIONS

REV-1

1" SCALE
 1" = 40'

DRAWN BY: RBH

DATE: 07/23/2018

STATE STREET
 PEDESTRIAN
 IMPROVEMENT PROJECT

PROPERTY ACQUISITION

OWNER: CVJA LLC

CHARLOTTE, MECKLENBURG CO., NC

CHECKED BY: _____ SURVEY SUPERVISOR

JOB NO.
 P1MES181539

FILE NO.
 -

SHEET
 2

OF
 2