

I, JAMES E. DAVIS, CERTIFY THAT THIS PLAT WAS PREPARED UNDER MY SUPERVISION AND THAT THE PLAT WAS PREPARED FOR THE PURPOSE OF ACQUISITION AND EASEMENTS ONLY, AND IS NOT INTENDED TO BE A BOUNDARY SURVEY OF PROPERTY SHOWN.

J E Davis
JAMES E. DAVIS, NC P.L.S. L-3747 DATE _____

State of North Carolina
 County of Mecklenburg

I, _____, Review Officer of Mecklenburg County, certify that the map or plat to which this certification is affixed meets all statutory requirements for recording.

Review Officer _____ Date _____

- NOTE:**
- HORIZONTAL DATUM FOR PROJECT IS NC GRID NAD83(2011) AND VERTICAL DATUM IS NAVD88 FROM GPS OBSERVATIONS COMPLETED ON APRIL 04, 2017 UTILIZING THE NC VRS NETWORK. NCGS POINT "NC77" WAS UTILIZED AS THE NETWORK BASE AND NGS GEOID 12B WAS THE GEOID MODEL. THE LOCALIZATION POINT FOR THE PROJECT WAS MERRICK #205 HAVING NC GRID COORDINATES OF N=549229.675 FEET, E=1443216.005 FEET, ELEVATION=695.98 FEET AND A COMBINED FACTOR OF 0.999844756.
 - ALL DISTANCES SHOWN ARE HORIZONTAL GROUND DISTANCES.
 - AREAS DETERMINED BY COORDINATE COMPUTATIONS.
 - TRAVERSE ADJUSTED BY LEAST SQUARE ADJUSTMENT METHOD.

Line #	Length	Direction
L1	70.00	N81° 16' 15"E
L2	35.13	S7° 54' 19"E
L3	151.75	S7° 54' 19"E
L4	3.12	S7° 54' 19"E
L5	69.78	S82° 00' 35"W
L6	3.05	N7° 58' 06"W
L7	186.04	N7° 58' 06"W
L8	2.87	N81° 57' 15"E
L9	13.00	N14° 34' 27"E
L10	14.00	N81° 57' 15"E
L11	12.37	S22° 04' 55"E
L12	44.92	N81° 57' 15"E
L13	92.19	S82° 10' 25"W

Parcel Line Table

Line #	Length	Direction
L1	70.00	N81° 16' 15"E
L2	35.13	S7° 54' 19"E
L3	151.75	S7° 54' 19"E
L4	3.12	S7° 54' 19"E
L5	69.78	S82° 00' 35"W
L6	3.05	N7° 58' 06"W
L7	186.04	N7° 58' 06"W
L8	2.87	N81° 57' 15"E
L9	13.00	N14° 34' 27"E
L10	14.00	N81° 57' 15"E
L11	12.37	S22° 04' 55"E
L12	44.92	N81° 57' 15"E
L13	92.19	S82° 10' 25"W

LEGEND

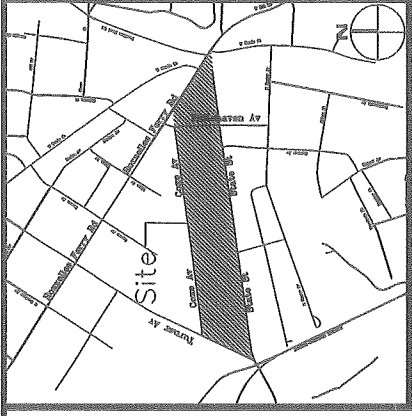
- COMPUTED POINT
- IRON PIN FOUND
- PROPERTY LINE
- TEMP. CONSTRUCTION EASEMENT

AREAS:
 1. TOTAL AREA 13,247 SQ. FT.
 2. TEMP. CONSTRUCTION EASEMENT 431 SQ. FT.
 3. AREA REMAINING 13,247 SQ. FT.

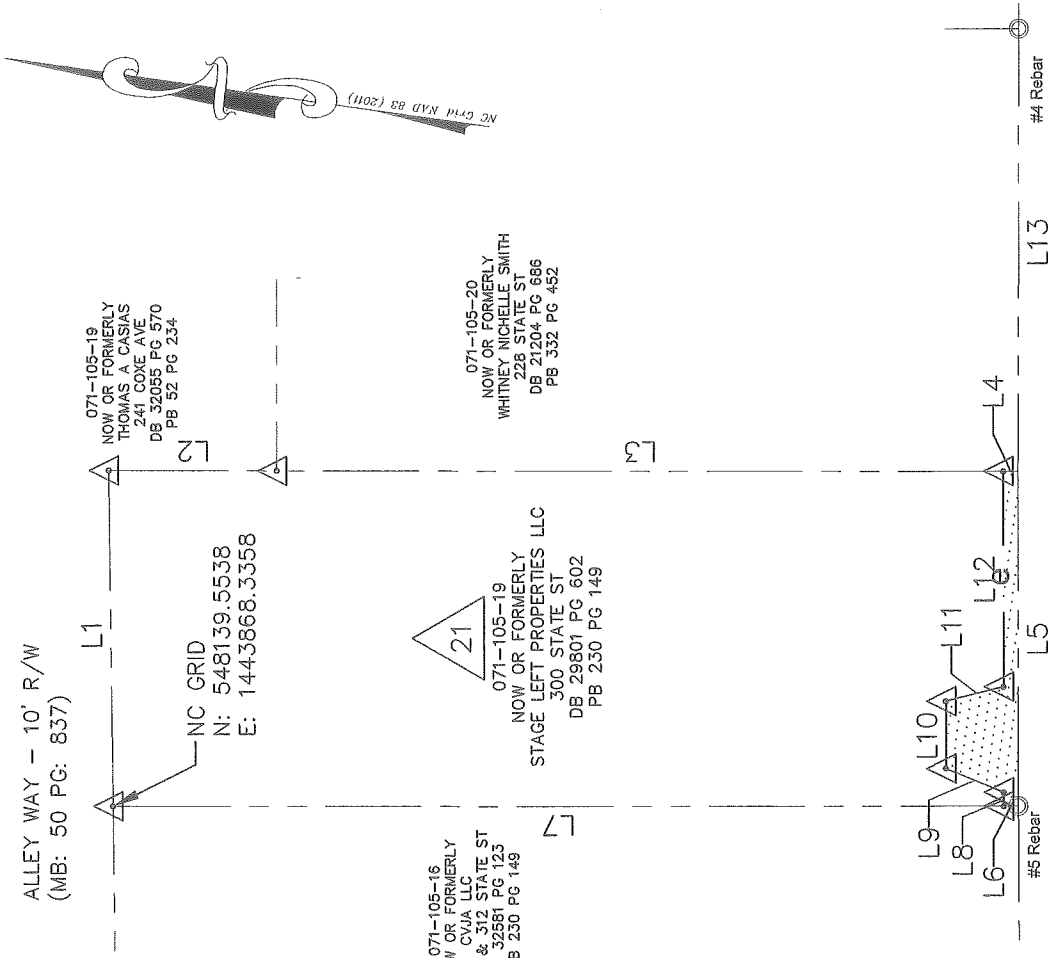
PREPARED BY:
MERRICK & COMPANY
 1001 MOREHEAD SQUARE DR.
 SUITE 530
 CHARLOTTE, NC 28203
 704-529-6500



DB 32994-217



VICINITY MAP (NOT TO SCALE)



STATE ST. - 50' R/W
 (MB: 24 PG: 925)



CHARLOTTE
 ENGINEERING & PROPERTY MANAGEMENT

STATE STREET PEDESTRIAN IMPROVEMENT PROJECT
PROPERTY ACQUISITION
 OWNER: STAGE LEFT PROPERTIES, LLC
 CHARLOTTE, MECKLENBURG CO., NC

REVISIONS	JOB NO. P/MES181539
	FILE NO. -
	SHEET 1
	OF 1

DATE 05/31/2018

CHECKED BY SURVEY SUPV.