

I, JAMES E. DAVIS, CERTIFY THAT THIS PLAT WAS PREPARED UNDER MY SUPERVISION AND THAT THE PLAT WAS PREPARED FOR THE PURPOSE OF ACQUISITION AND EASEMENTS ONLY, AND IS NOT INTENDED TO BE A BOUNDARY SURVEY OF PROPERTY SHOWN.

J. E. Davis
JAMES E. DAVIS, NC P.L.S. L-3747 DATE

State of North Carolina
 County of Mecklenburg

I, _____, Review Officer of Mecklenburg County, certify that the map or plat to which this certification is affixed meets all statutory requirements for recording.

Review Officer _____

Date _____






NOTE:

- HORIZONTAL DATUM FOR PROJECT IS NC GRID NAD83(2011) AND VERTICAL DATUM IS NAVD88 FROM GPS OBSERVATIONS COMPLETED ON APRIL 04, 2017 UTILIZING THE NC VRS NETWORK. NCGS POINT "NC77" WAS UTILIZED AS THE NETWORK BASE AND NGS GEIOD 12B WAS THE GEIOD MODEL. THE LOCALIZATION POINT FOR THE PROJECT WAS MERRICK #205 HAVING NC GRID COORDINATES OF N=549229.675 FEET, E=1443216.005 FEET, ELEVATION=695.98 FEET AND A COMBINED FACTOR OF 0.999844756. ALL DISTANCES SHOWN ARE HORIZONTAL GROUND DISTANCES.
- AREAS DETERMINED BY COORDINATE COMPUTATIONS.
- TRAVERSE ADJUSTED BY LEAST SQUARE ADJUSTMENT METHOD.

Parcel Line Table

Line #	Length	Direction
L1	7.87	N83° 17' 27"E
L2	40.02	N83° 17' 27"E
L3	24.27	N83° 17' 27"E
L4	77.21	N0° 55' 32"E
L5	76.42	N82° 03' 46"E
L6	66.95	S3° 48' 13"W
L7	12.54	N3° 48' 13"E
L8	12.98	N45° 40' 00"E
L9	4.40	N8° 21' 28"W
L10	30.00	N81° 38' 32"E
L11	10.52	N63° 37' 35"E
L12	70.52	S3° 48' 13"W

LEGEND

- COMPUTED POINT 
- IRON PIN FOUND 
- PROPERTY LINE 
- TEMP. CONSTRUCTION EASEMENT 
- SIDEWALK, UTILITY EASEMENT 

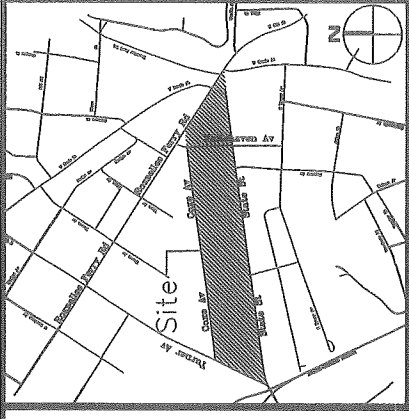
AREAS:

- TOTAL AREA 11,179 SQ. FT.
- TEMP. CONSTRUCTION EASEMENT 137 SQ. FT.
- SIDEWALK UTILITY EASEMENT 72 SQ. FT.
- SAREA REMAINING 11,179 SQ. FT.

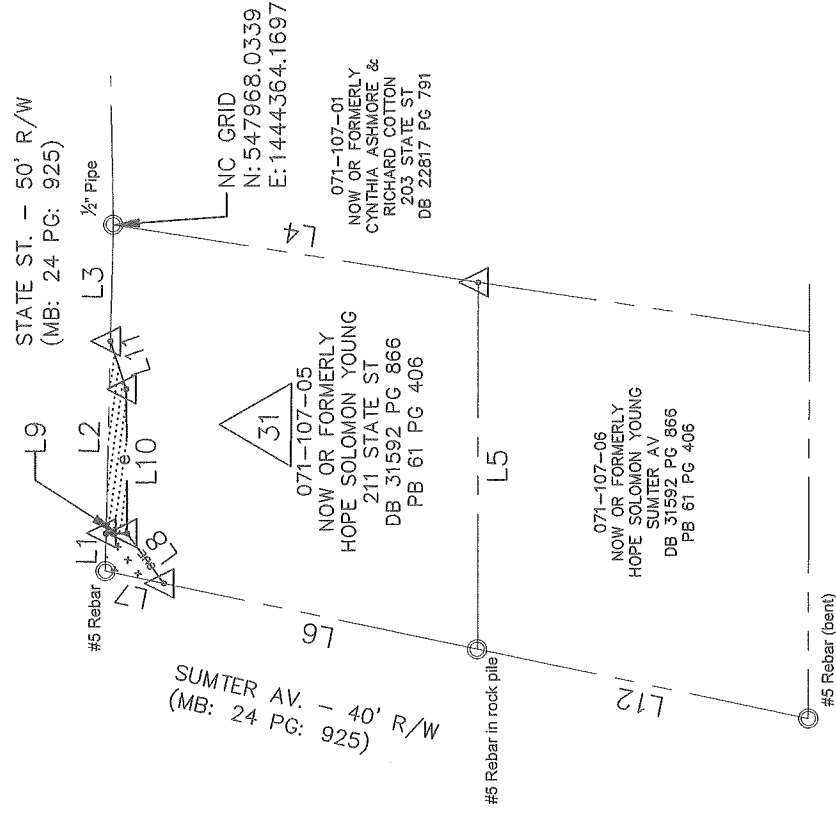
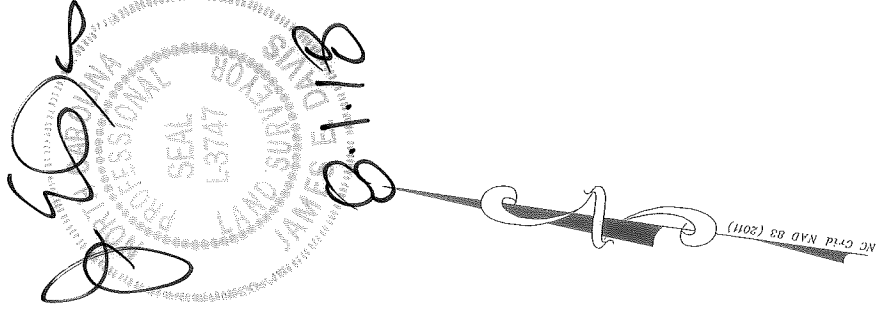
PREPARED BY:
MERRICK & COMPANY
 1001 MOREHEAD SQUARE DR.
 SUITE 530
 CHARLOTTE, NC 28203
 704-529-6500



DB 33104-55



VICINITY MAP (NOT TO SCALE)



CHARLOTTE
 ENGINEERING & PROPERTY MANAGEMENT

REVISIONS

STATE STREET PEDESTRIAN IMPROVEMENT PROJECT
 PROPERTY ACQUISITION
 OWNER: HOPE SOLOMON YOUNG
 CHARLOTTE, MECKLENBURG CO., NC



DRAWN BY: RRH

DATE 05/31/2018

CHECKED BY SURVEY SUPVR.

JOB NO. PMES181539
 FILE NO. -
 SHEET 1
 OF 1