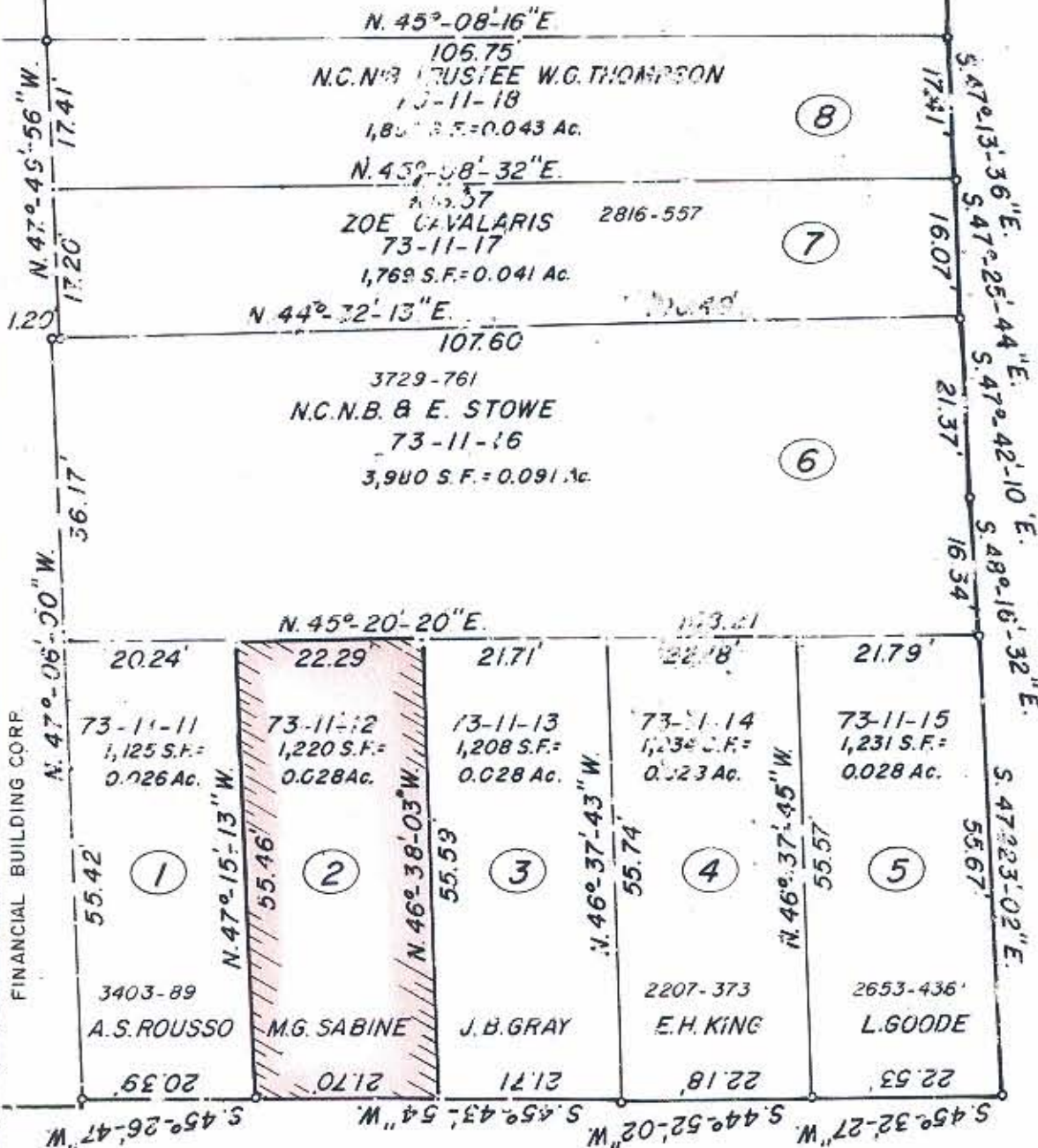


J. W. KEERANS

WEST TRADE STREET



SOUTH TRYON STREET

NOTE: Property corners shown circled were located by actual survey. Bearings are based on MAP BY R.B. PHARR & ASSOC. 4/10/81

This plat was prepared under my supervision Stephen Gilbert
 N.C. Reg. Surveyor No. L-1785



INDEPENDENCE SQUARE PARK		CITY OF CHARLOTTE	
CITY OF CHARLOTTE		NORTH CAROLINA	
DEPARTMENT OF PUBLIC WORKS		ENGINEERING DIVISION	
REVISIONS	PROPERTY TO BE ACQUIRED BY	JOB NO. 512-52	
	CITY OF CHARLOTTE	FILE NO.	
	PROPERTY OF	SHEET 2	
DRAWN BY M.S.	MARY GRAY SABINE	OF 4	
CHECKED BY R.B. PHARR	DATE AUG. 17 1981	SCALE 1" = 20'	
CITY ENGINEER			