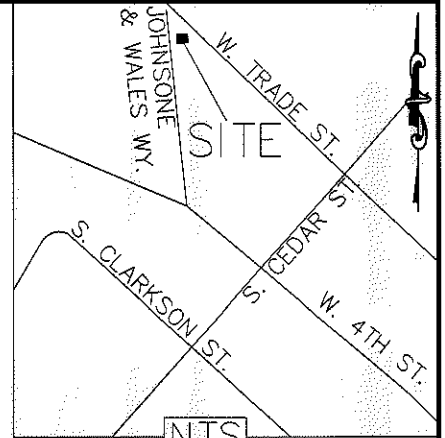


I, DAVID H. SNIDER, CERTIFY THAT THIS PLAT WAS PREPARED UNDER MY SUPERVISION AND THAT THE PLAT WAS PREPARED FOR THE PURPOSE OF EASEMENTS ONLY, AND IS NOT INTENDED TO BE A BOUNDARY SURVEY OF PROPERTY SHOWN.

DAVID H. SNIDER, N.C. P.L.S. L-2942 DATE

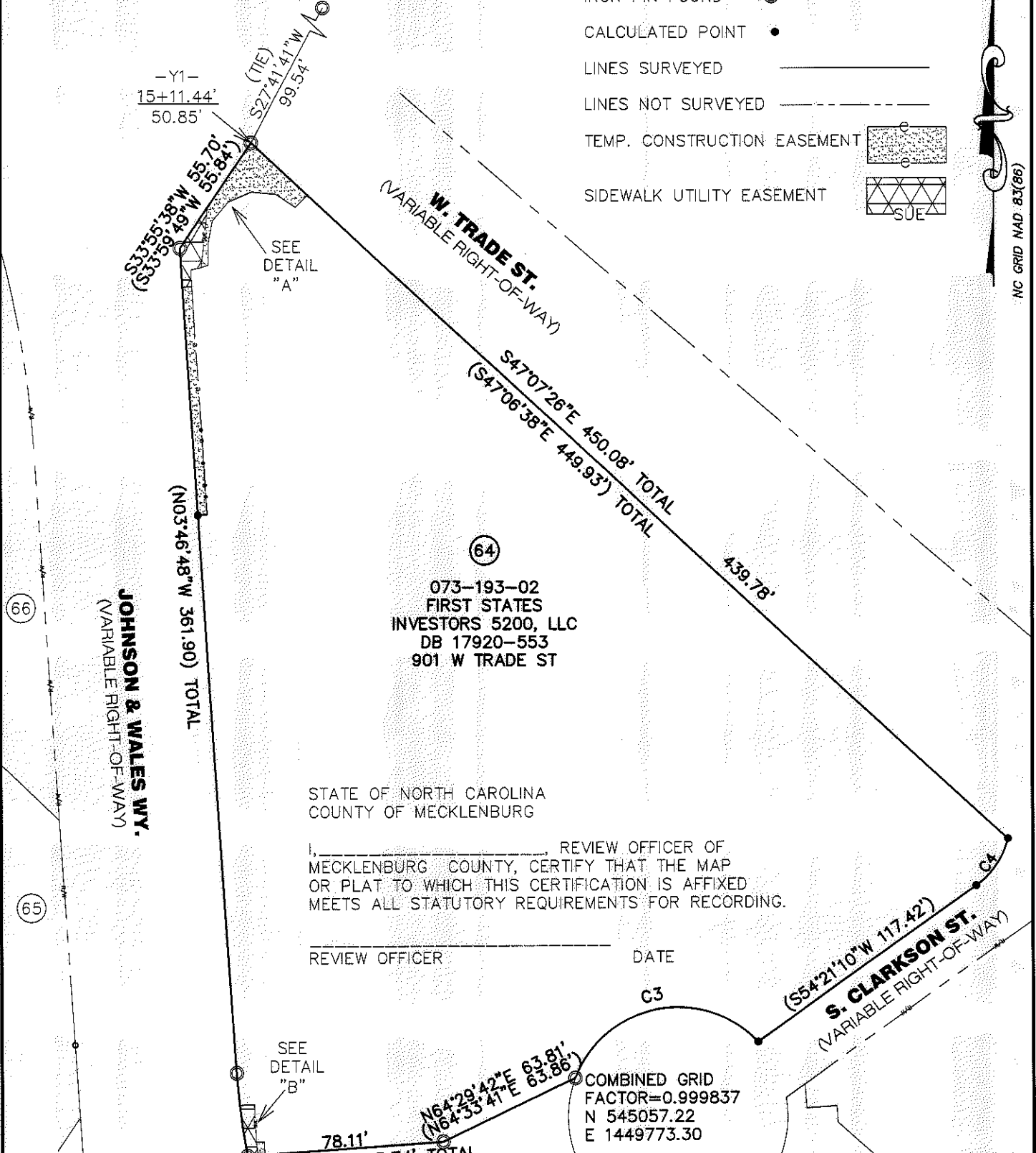
*David H. Snider* 2/25/13



**LEGEND**

- IRON PIN FOUND
- CALCULATED POINT
- LINES SURVEYED
- LINES NOT SURVEYED
- TEMP. CONSTRUCTION EASEMENT
- SIDEWALK UTILITY EASEMENT

- 1) BEARINGS AND DISTANCES SHOWN IN PARENTHESES ARE BASED ON RECORDED MAP INFORMATION.
- 2) TOTAL AREA 88,057 SQ. FT.
- 3) TEMP CONSTRUCTION EASEMENT 629 SQ. FT.
- 4) SIDEWALK UTILITY EASEMENT 326 SQ. FT.
- 5) AREA REMAINING 88,057 SQ. FT.



STATE OF NORTH CAROLINA  
COUNTY OF MECKLENBURG

I, \_\_\_\_\_ REVIEW OFFICER OF MECKLENBURG COUNTY, CERTIFY THAT THE MAP OR PLAT TO WHICH THIS CERTIFICATION IS AFFIXED MEETS ALL STATUTORY REQUIREMENTS FOR RECORDING.

REVIEW OFFICER

DATE

C3

66

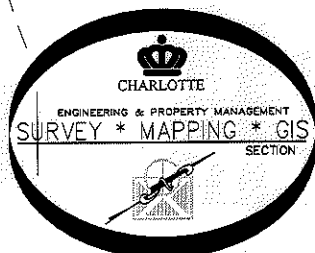
65

64

073-193-02  
FIRST STATES  
INVESTORS 5200, LLC  
DB 17920-553  
901 W TRADE ST

63

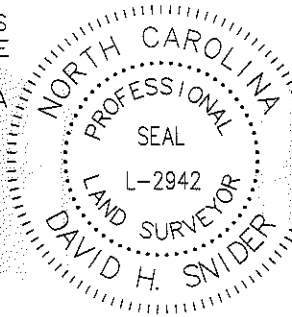
PREPARED BY:  
CITY OF CHARLOTTE  
ENGINEERING DEPARTMENT  
600 EAST FOURTH STREET  
CHARLOTTE, NC 28202  
704-336-2291



		CHARLOTTE ENGINEERING DEPARTMENT	
REVISIONS		JOHNSON & WALES WY/ 4TH ST./ TRADE ST. PROJECT	JOB NO. 512-08-018
2/25/13 TCE 2/6/13 TCE 8/23/12 PROJECT TITLE 8/2/12 SUE			208018
SCALE 1" = 60'			SHEET 1
DRAWN BY P.S.		PROPERTY OF FIRST STATES INVESTORS 5200, LLC CHARLOTTE, MECKLENBURG CO., NC	OF 2
DATE		CHECKED BY DS	SURVEY SUPVR. <i>DS</i>
K:\AutoCad\En_su-LD4\208018 Johnson&Wales-4thst-Trade st\dwg\PLATS\#64 073-193-02			

ACQUISITION BY DB 28538g 589

I, DAVID H. SNIDER, CERTIFY THAT THIS PLAT WAS PREPARED UNDER MY SUPERVISION AND THAT THE PLAT WAS PREPARED FOR THE PURPOSE OF EASEMENTS ONLY, AND IS NOT INTENDED TO BE A BOUNDARY SURVEY OF PROPERTY SHOWN.



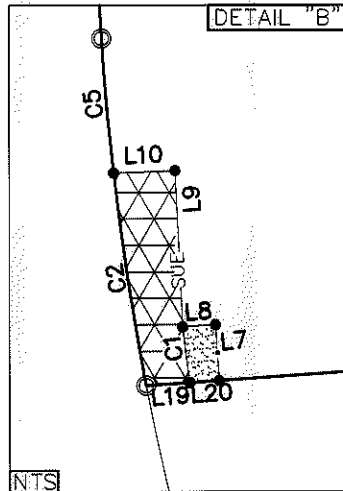
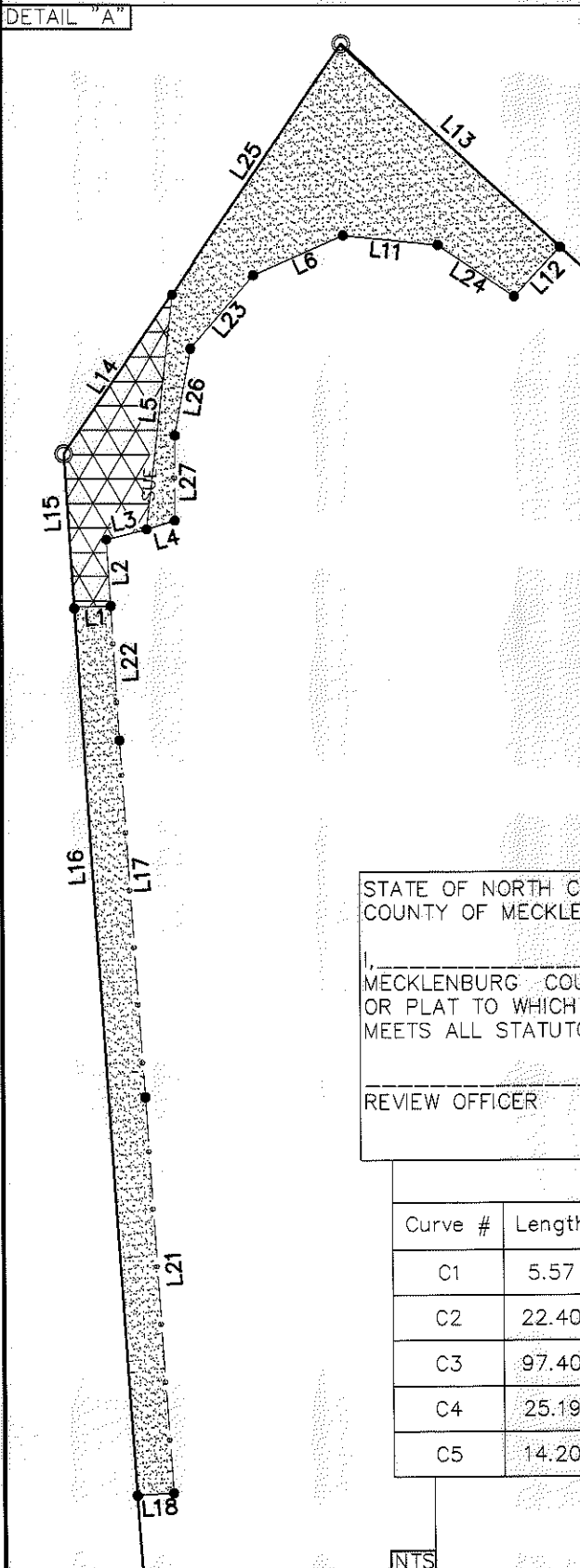
**LEGEND**

- IRON PIN FOUND
- CALCULATED POINT
- LINES SURVEYED
- LINES NOT SURVEYED
- TEMP. CONSTRUCTION EASEMENT
- SIDEWALK UTILITY EASEMENT

DAVID H. SNIDER, NC L.S. L-2942 DATE 1/25/13  
*David H. Snider*

- 1) BEARINGS AND DISTANCES SHOWN IN PARENTHESES ARE BASED ON RECORDED MAP INFORMATION.
- 2) TOTAL AREA 88,057 SQ. FT.
- 3) TEMP CONSTRUCTION EASEMENT 629 SQ. FT.
- 4) SIDEWALK UTILITY EASEMENT 326 SQ. FT.
- 5) AREA REMAINING 88,057 SQ. FT.

DETAIL "A"



Line Table		
Line #	Length	Direction
L1	4.08	N86°08'36"E
L2	7.47	N03°32'22"W
L3	4.64	N75°51'31"E
L4	3.31	N72°13'02"E
L5	26.59	N06°13'21"E
L6	11.05	N65°59'42"E
L7	5.82	S03°53'52"E
L8	3.42	N86°06'08"E
L9	16.57	N02°36'09"W
L10	6.39	S87°51'49"W
L11	10.70	S84°07'56"E
L12	7.58	N42°52'34"E
L13	33.52	S47°07'26"E
L14	21.74	S33°55'38"W
L15	17.30	N03°47'22"W
L16	99.95	N03°47'30"W
L17	40.26	N03°54'46"W
L18	4.07	N86°12'31"E
L19	4.55	N86°06'08"E
L20	3.08	N86°06'08"E
L21	44.63	N3°45'26"W
L22	15.07	N3°32'22"W
L23	10.84	N40°34'09"E
L24	10.31	S55°59'45"E
L25	33.95	S33°55'38"W
L26	9.93	N10°06'34"E
L27	9.59	N0°05'55"E

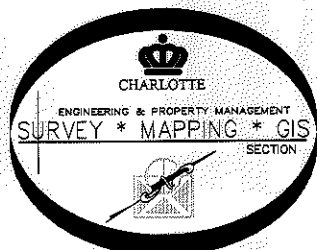
STATE OF NORTH CAROLINA  
 COUNTY OF MECKLENBURG

\_\_\_\_\_, REVIEW OFFICER OF MECKLENBURG COUNTY, CERTIFY THAT THE MAP OR PLAT TO WHICH THIS CERTIFICATION IS AFFIXED MEETS ALL STATUTORY REQUIREMENTS FOR RECORDING.

REVIEW OFFICER \_\_\_\_\_ DATE \_\_\_\_\_

Curve Table				
Curve #	Length	Radius	CHORD BEARING	CHORD
C1	5.57	185.69	S7°29'00"E	5.57
C2	22.40	301.00	S8°32'30"E	22.39
C3	97.40	48.00	S79°15'08"W	81.53
C4	25.19	34.08	N33°59'30"E	24.62
C5	14.20	301.00	S5°03'30"E	14.20

PREPARED BY:  
 CITY OF CHARLOTTE  
 ENGINEERING DEPARTMENT  
 600 EAST FOURTH STREET  
 CHARLOTTE, NC 28202  
 704-336-2291



**CHARLOTTE**  
ENGINEERING DEPARTMENT

REVISIONS 2/25/13 TCE 2/6/13 TCE 8/23/12 PROJECT TITLE 8/2/12 SUE	JOHNSON & WALES WY/ 4TH ST./ TRADE ST PROJECT	JOB NO. 512-08-018 208018
SCALE 1"=60" 	PROPERTY OF FIRST STATES INVESTORS 5200, LLC CHARLOTTE, MECKLENBURG CO., NC	SHEET 2 OF 2
DRAWN BY P.S. DATE _____	CHECKED BY DS SURVEY SUPVR. <i>DWR</i>	

K:\AutoCad\En\_su-LD4\208018 Johnson&Wales-4thst-Trade st\dwg\PLATS\#64 073-193-02