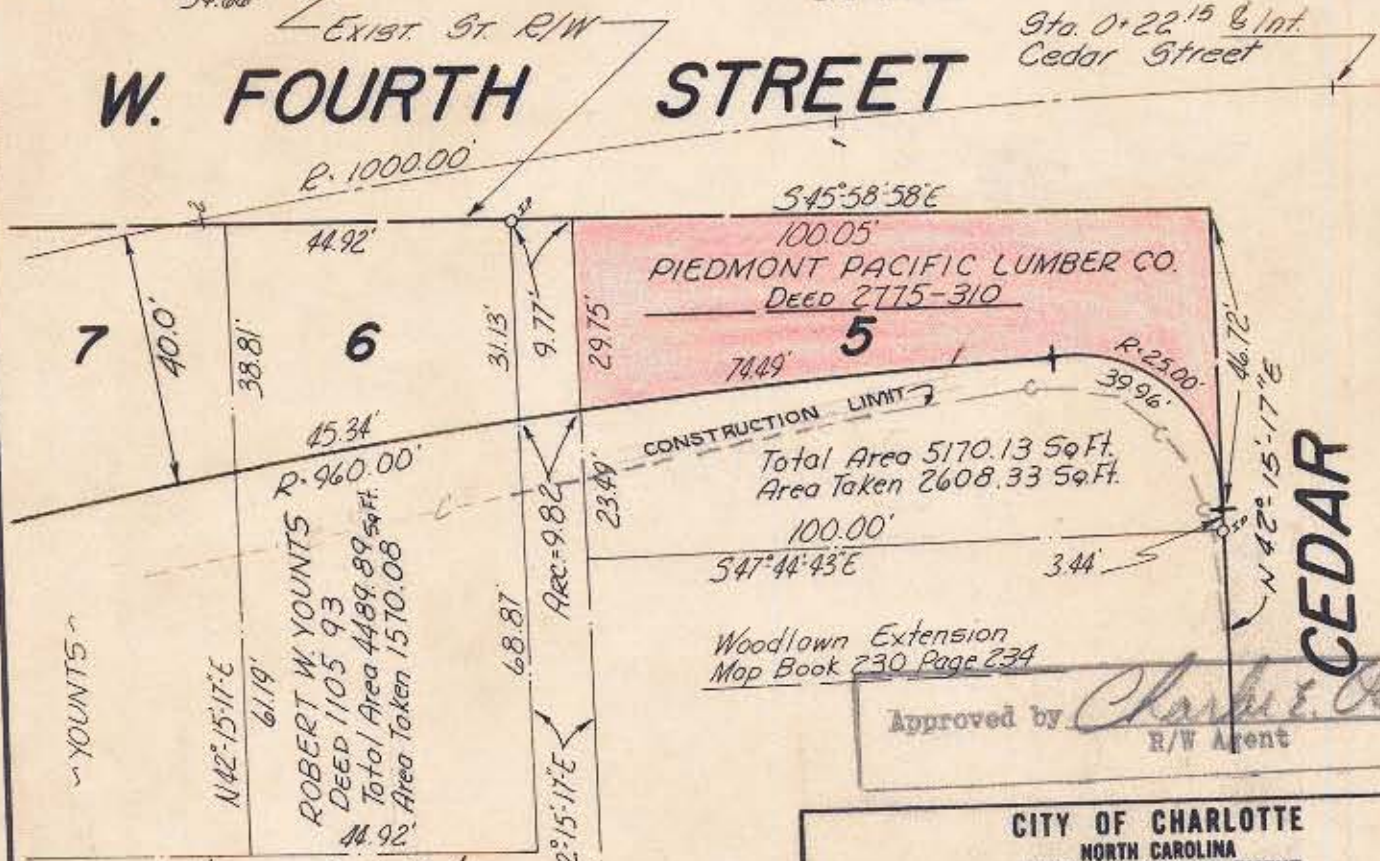


NOTE: Property corners shown circled were located by actual survey. Bearings are based on Plots of Wesley Heights

W. FOURTH STREET

STREET

CEDAR



Approved by *Charles E. Owens*
R/W Agent

This plat was prepared under my supervision *C. D. Readling*
N.C. Reg. Engineer No. *3659*

CITY OF CHARLOTTE NORTH CAROLINA ENGINEERING DEPARTMENT		JOB NO. 137
WEST FOURTH ST. EXTENSION		FILE NO.
Property of PIEDMONT PACIFIC LUMBER CO.		SHEET 5
REVISIONS	DATE <i>Dec. 66</i> SCALE <i>1" = 30'</i>	OF 70
DRAWN BY <i>BEAN</i>		
CHECKED BY <i>J.F.F.</i>		
CITY ENGINEER		