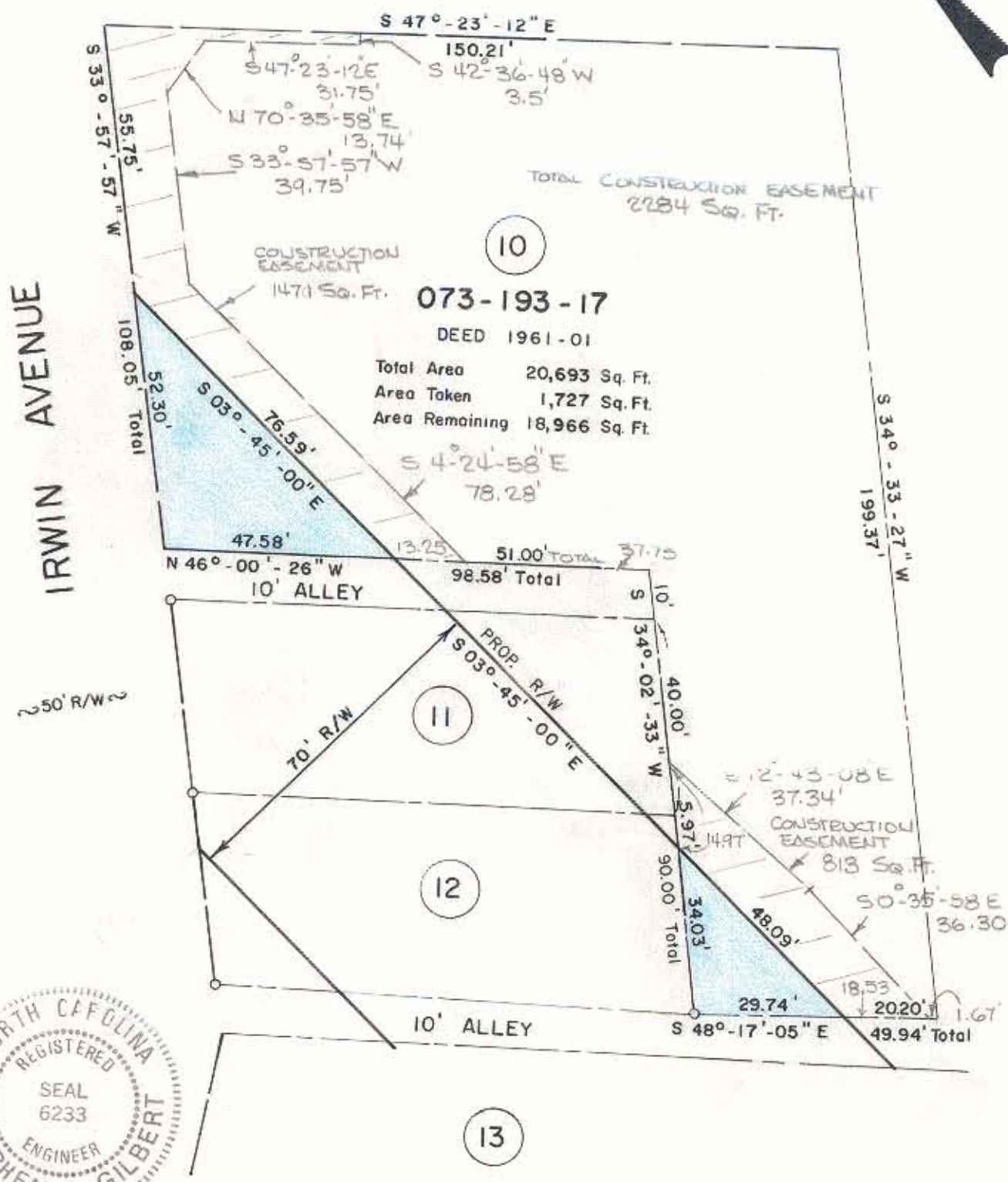


TRADE STREET



NOTE: Property corners shown circled were located by actual survey. Bearings are based on N.C. COORDINATE SYSTEM

This plat was prepared under my supervision *Stephen A. Gilbert*
 N.C. Reg. Engineer No. 6233

CITY OF CHARLOTTE NORTH CAROLINA DEPARTMENT OF PUBLIC WORKS ENGINEERING DIVISION		
REVISIONS CONST. EASEMENT MAY 12, 76 BOT	PROPOSED R/W TRADE-FOURTH CONNECTOR PROJECT NO. 513-73-083	JOB NO. FILE NO. RW 107
DRAWN BY CSC CHECKED BY <i>RLO</i> CITY ENGINEER	PARCEL NO. 10 PENN MUTUAL LIFE INSURANCE COMPANY	SHEET 10 OF 29
DATE April 22, 1975 SCALE 1"=30'		

FILE 73-2271-01