

JEFFERSON ST.

ST.

W.

PROP. R/W

NOTE: Property corners shown were located by actual survey. Bearings are based on CONSOER, TOWNSEND & ASSOC. CONSTR. PLAN DATED 11/28/77

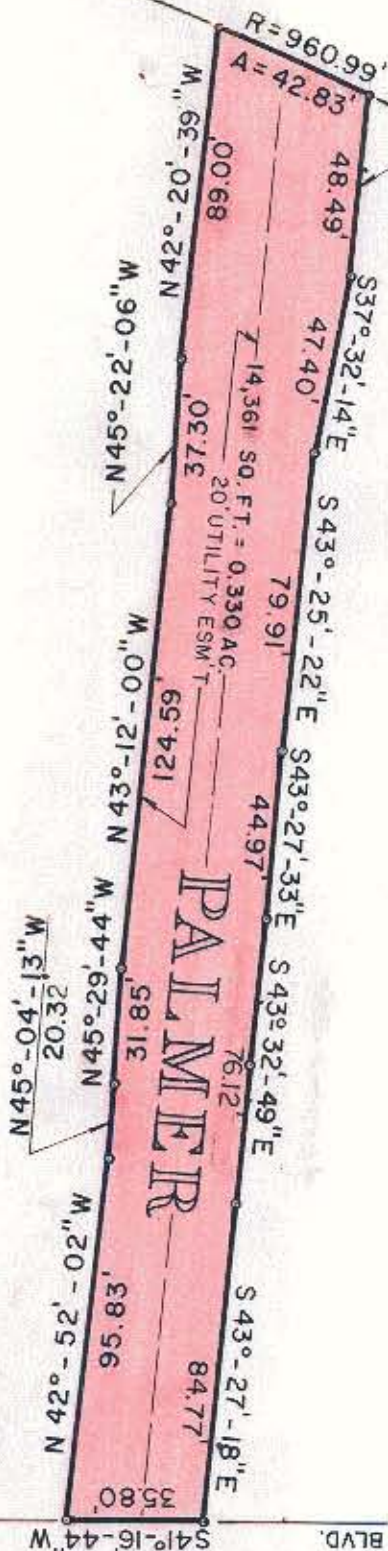
This plat was prepared under my supervision *Stephen A. Gilbert* N. C. Reg. Surveyor No. L-1785



CITY OF CHARLOTTE

BLOCK 43 LOT 1

BLOCK 35 LOT 1 CITY OF CHARLOTTE



WINNIFRED ST.

ST.

PROP. R/W

163.89' TO E INDEPENDENCE BLVD.

CITY OF CHARLOTTE NORTH CAROLINA DEPARTMENT OF PUBLIC WORKS ENGINEERING DIVISION		WEST MOREHEAD COMMUNITY DEVELOPMENT STRATEGY AREA	JOB NO.
REVISIONS	DRAWN BY AT	R/W TO BE ABANDONED	FILE NO.
CITY ENGINEER	CHECKED BY ZG	WEST PALMER STREET	SHEET 1 OF
DATE SEPT. 25, 1981	SCALE 1" = 50'		

FILE 73-271-07