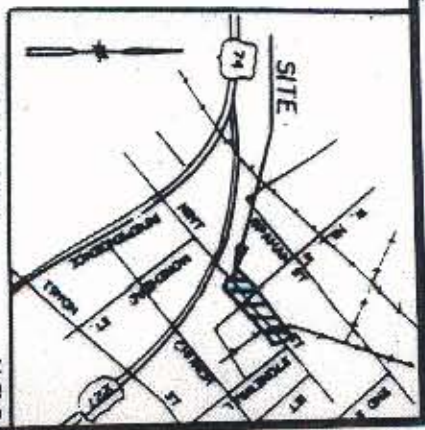
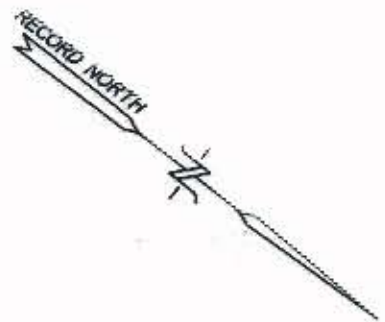
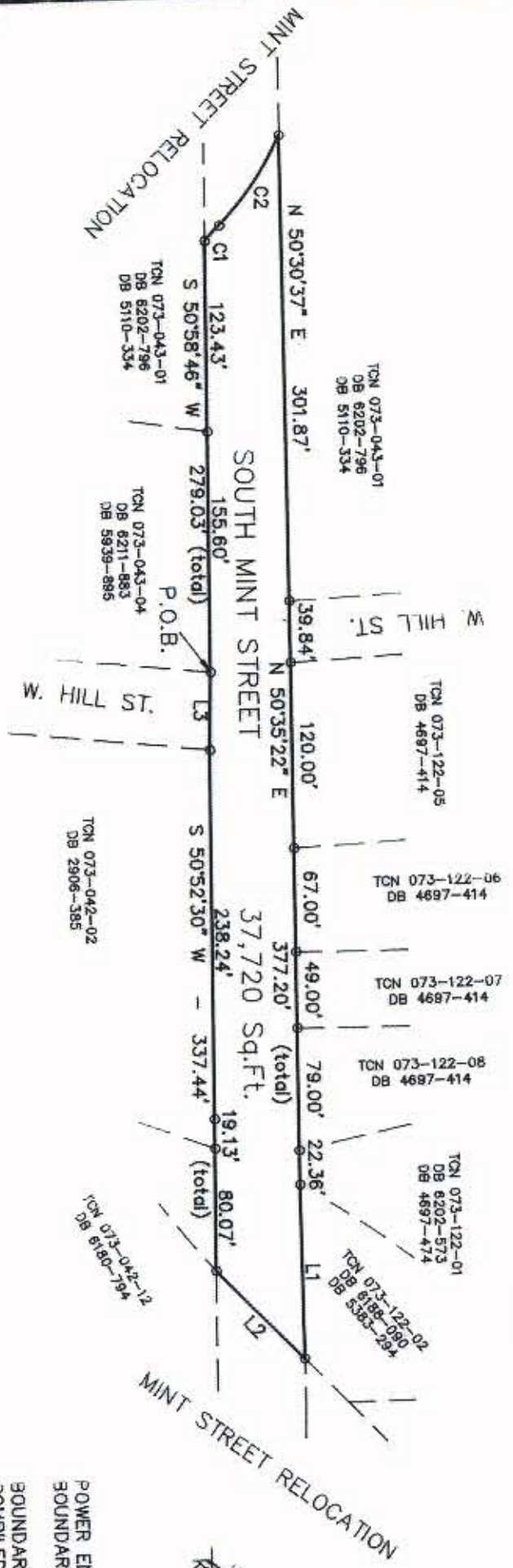


CURVE	RADIUS	LENGTH	TANGENT	CHORD	BEARING	DELTA
C1	490.00'	13.70'	6.85'	13.70'	N 85°21'21" W	01°36'07"
C2	190.00'	70.42'	35.62'	70.02'	N 84°52'16" E	21°14'11"

LINE	DIRECTION	DISTANCE
L1	N 49°57'42" E	113.01'
L2	S 06°38'20" W	80.13'
L3	S 50°58'46" W	50.24'



Kenneth M. Green
 KENNETH M. GREEN, RLS L-3512

POWER ENGINEERING COMPANY, INC. HAS PERFORMED NO BOUNDARY FIELD WORK AT THIS TIME.
 BOUNDARY & ACREAGE INFORMATION TAKEN FROM THE COMPILED MAP FOR THE CITY OF CHARLOTTE DATED SEPTEMBER 15, 1993 BY POWER ENGINEERING COMPANY, INC. AND HAS NOT BEEN FIELD VERIFIED BY POWER ENGINEERING COMPANY, INC.


Revised Book 7676 Pages 018-034

PREPARED BY
POWER ENGINEERING COMPANY, INC.
 ENGINEERS - PLANNERS - SURVEYORS

P.O. BOX 411491 CHARLOTTE, NORTH CAROLINA 28241
 PH: (704)368-4304 FAX: (704)368-1838



073

 CHARLOTTE ENGINEERING DEPARTMENT		JOB NO. 512-89-578
A MAP OF SOUTH MINT STREET R/W ABANDONMENT PREPARED FOR		FILE NO. 1
REVISIONS	DRAWN BY: M.A.L. CHECKED BY: K.M.G.	SHEET 1
CITY OF CHARLOTTE		DATE NOV. 19, 1993 SCALE 1" = 100'