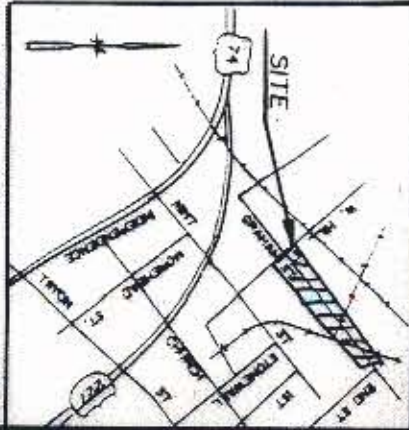
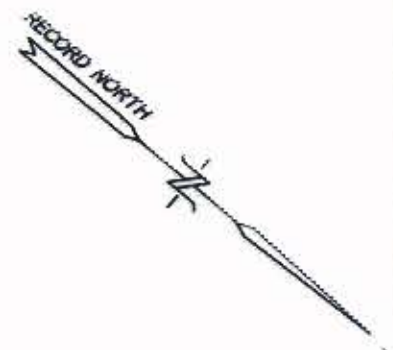
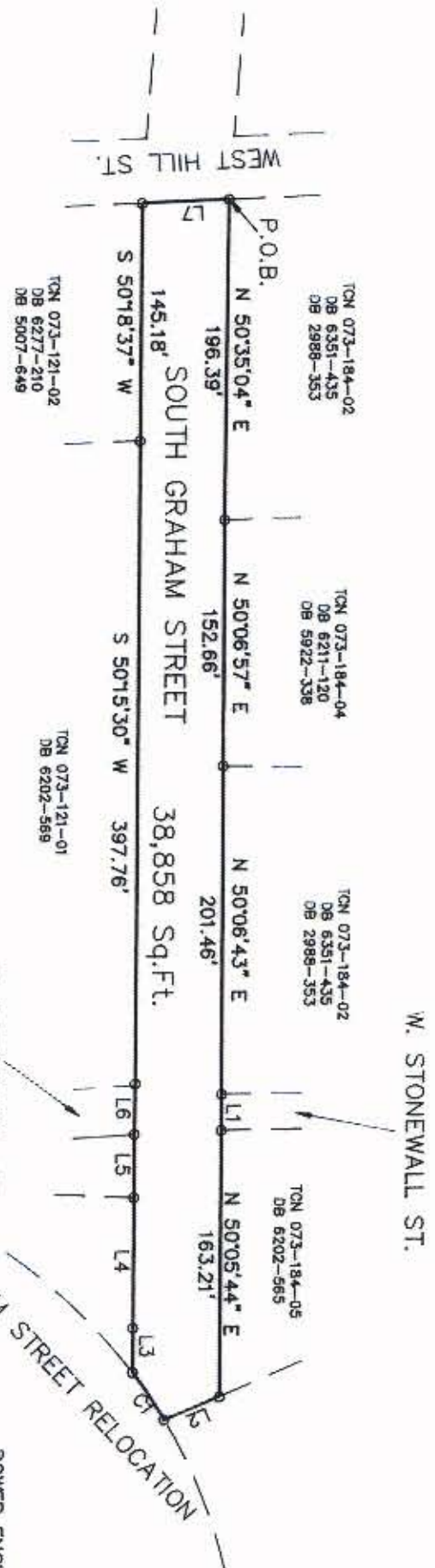


CURVE	RADIUS	LENGTH	TANGENT	CHORD	BEARING	DELTA
C1	326.48'	34.99'	17.51'	34.98'	S 16°07'53" W	06°08'28"

LINE	DIRECTION	DISTANCE
L1	N 50°09'02" E	21.99'
L2	S 63°29'44" E	36.70'
L3	S 50°09'36" W	27.74'
L4	S 50°06'48" W	79.52'
L5	S 50°07'38" W	38.58'
L6	S 50°40'07" W	30.01'
L7	N 42°43'00" W	52.99'

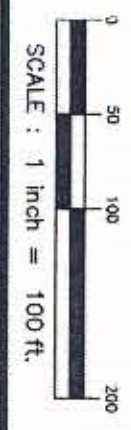


Kenneth M. Green, RLS
L-3512

POWER ENGINEERING COMPANY, INC. HAS PERFORMED NO BOUNDARY FIELD WORK AT THIS TIME.

BOUNDARY & ACREAGE INFORMATION TAKEN FROM THE COMPILED MAP FOR THE CITY OF CHARLOTTE DATED SEPTEMBER 15, 1993 BY POWER ENGINEERING COMPANY, INC. AND HAS NOT BEEN FIELD VERIFIED BY POWER ENGINEERING COMPANY, INC.

PREPARED BY
POWER ENGINEERING COMPANY, INC.
ENGINEERS - PLANNERS - SURVEYORS



<p>CHARLOTTE ENGINEERING DEPARTMENT</p>	
<p>REVISIONS</p>	<p>A MAP OF SOUTH GRAHAM STREET R/W ABANDONMENT</p> <p>PREPARED FOR CITY OF CHARLOTTE</p>
<p>DATE NOV 19, 1993</p>	<p>JOB NO. 912-88-578 FILE NO.</p>
<p>CITY ENGINEER</p>	<p>SHEET 2 OF 2</p>

Acquired Book 7676 Pages 08-017

73-10-10-10