

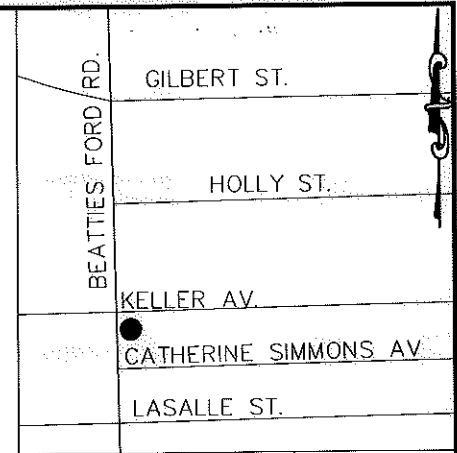
I, DAVID H. SNIDER, CERTIFY THAT THIS PLAT WAS PREPARED UNDER MY SUPERVISION AND THAT THE PLAT WAS PREPARED FOR THE PURPOSE OF EASEMENTS ONLY, AND IS NOT INTENDED TO BE A BOUNDARY SURVEY OF PROPERTY SHOWN.

David H. Snider 11/5/2010
 DAVID H. SNIDER, NC P.L.S. L-2942 DATE



LEGEND

- CALCULATED POINT ●
- LINES SURVEYED _____
- LINES NOT SURVEYED - - - - -
- TEMP. CONSTRUCTION EASEMENT [Symbol]
- SIDEWALK UTILITY EASEMENT [Symbol]



NTS

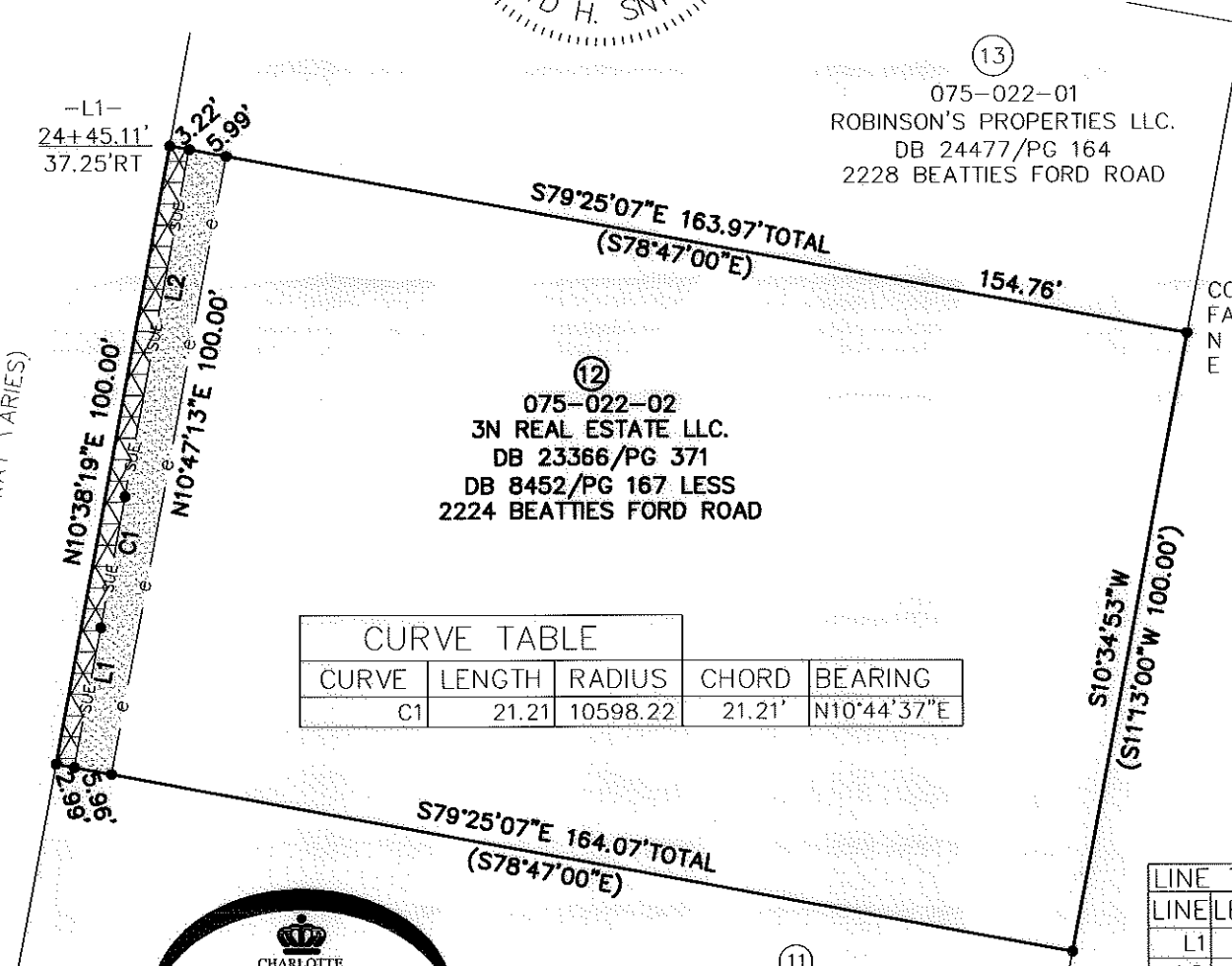
- 1) BEARINGS AND DISTANCES SHOWN IN PARENTHESES ARE BASED ON RECORDED MAP INFORMATION.
- 2) TOTAL AREA 16,402 SQ. FT.
- 3) TEMP CONSTRUCTION EASEMENT 597 SQ. FT.
- 4) SIDEWALK UTILITY EASEMENT 311 SQ. FT.
- 5) AREA REMAINING 16,402 SQ. FT.

COMBINED GRID
 FACTOR=0.99984145
 N 556594.07
 E 1446751.15

STATE OF NORTH CAROLINA
 COUNTY OF MECKLENBURG

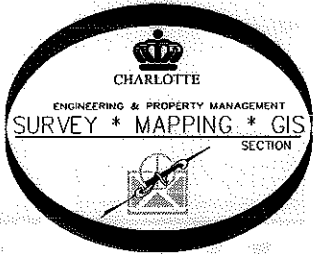
I, _____, REVIEW OFFICER OF MECKLENBURG COUNTY, CERTIFY THAT THE MAP OR PLAT TO WHICH THIS CERTIFICATION IS AFFIXED MEETS ALL STATUTORY REQUIREMENTS FOR RECORDING.

REVIEW OFFICER _____ DATE _____



CURVE	LENGTH	RADIUS	CHORD	BEARING
C1	21.21	10598.22	21.21'	N10°44'37"E

LINE	LENGTH	BEARING
L1	22.68	N10°48'15"E
L2	56.12	N10°46'09"E



PREPARED BY:
 CITY OF CHARLOTTE
 ENGINEERING DEPARTMENT
 600 EAST FOURTH STREET
 CHARLOTTE, NC 28202
 704-336-2291

⑪
 075-022-03
 TARSHA D. FIELDS
 DB 20203/PG 600
 2212 BEATTIES FORD ROAD

⑫
 075-022-02
 3N REAL ESTATE LLC.
 DB 23366/PG 371
 DB 8452/PG 167 LESS
 2224 BEATTIES FORD ROAD

⑬
 075-022-01
 ROBINSON'S PROPERTIES LLC.
 DB 24477/PG 164
 2228 BEATTIES FORD ROAD

		CHARLOTTE ENGINEERING DEPARTMENT	
REVISIONS		BEATTIES FORD ROAD BUSINESS CORRIDOR PROJECT	JOB NO. 512-07-062
			207062
SCALE 1" = 30"		PROPERTY OF 3N REAL ESTATE LLC. CHARLOTTE, MECKLENBURG CO., NC	SHEET 1
DRAWN BY P.S.			OF 1
DATE	CHECKED BY DS	SURVEY SUPERVISOR <i>DS</i>	