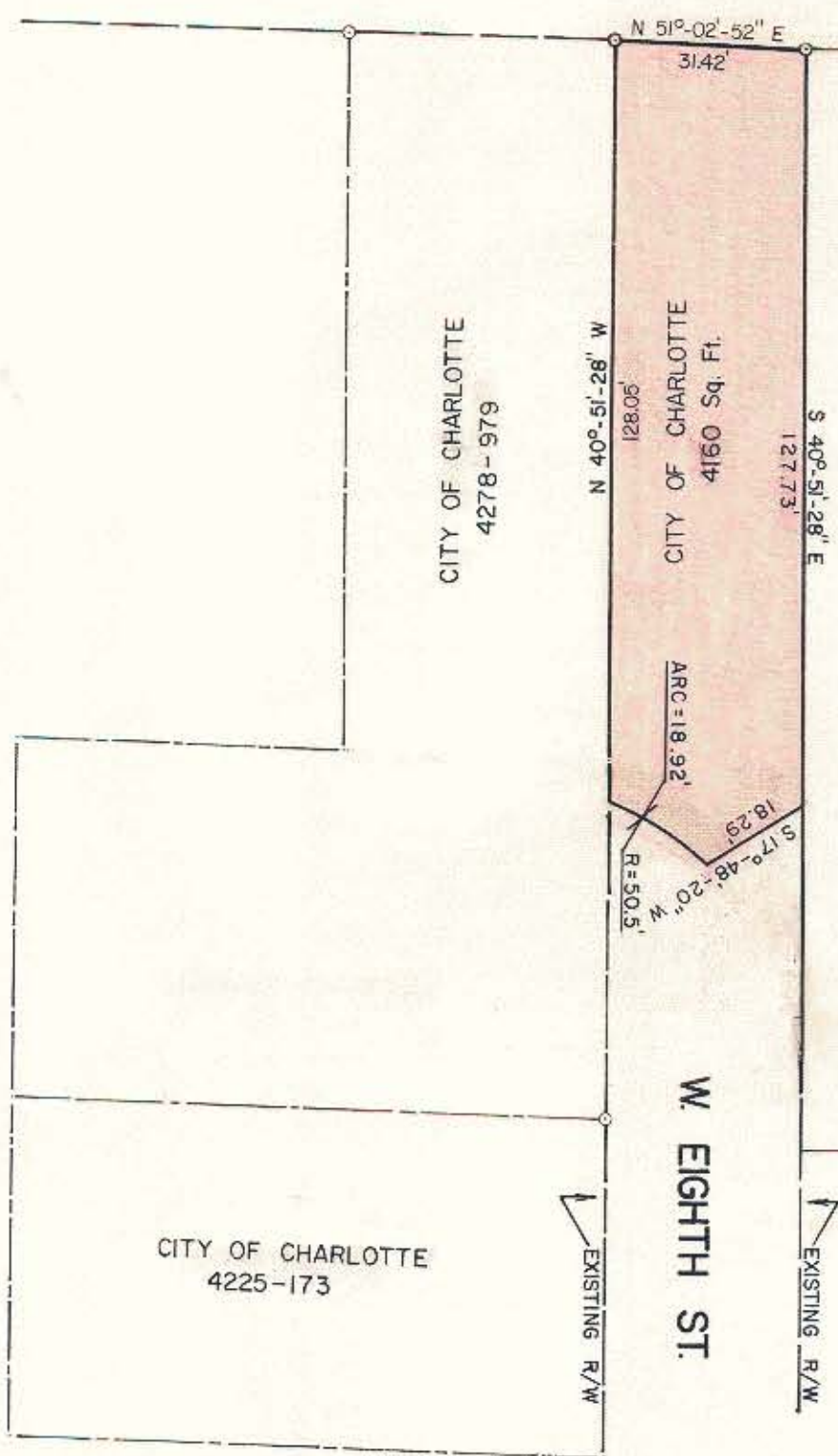


N. GRAHAM ST.



SHIRLEY G. WIGGINS  
2838-38

CITY OF CHARLOTTE  
4225-173



NOTE: Property corners shown circled were located by actual survey. Bearings are based on FOURTH WARD PARK BOUNDARY MAP

This plat was prepared under my supervision. *Stephen Alzibest*  
N. C. Reg. Surveyor No. L-1785

CITY OF CHARLOTTE  
NORTH CAROLINA  
DEPARTMENT OF PUBLIC WORKS  
ENGINEERING DIVISION

<b>REVISIONS</b> ARC, ARC LOCATION, BEARING, DIST. ON N. GRAHAM ST. 11/15/79 CAB RADIUS 12.5/79 CAB REDUCED CLOSED AREA 1/2/80 DRS	TEMPORARY CLOSING W. EIGHTH STREET AT N. GRAHAM STREET	JOB NO. 512-76-193 FILE NO.
	FOURTH WARD REDEVELOPMENT AREA	SHEET 1 OF 1
DRAWN BY CAB CHECKED BY CAB CITY ENGINEER	DATE MAY 2, 1979	SCALE 1" = 30'