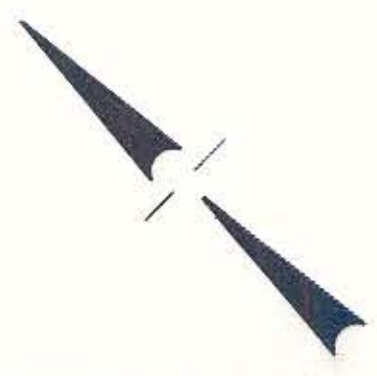
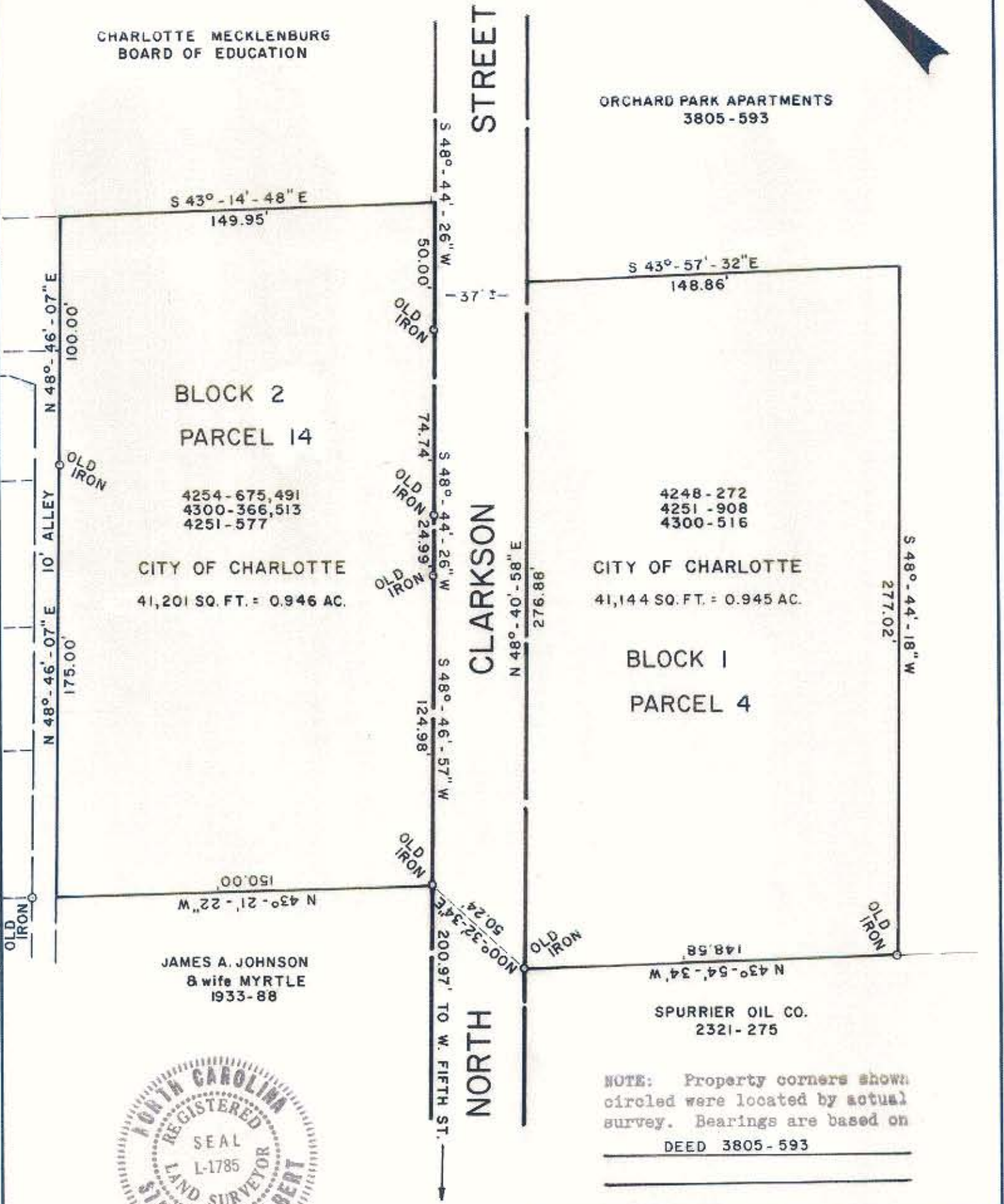


CHARLOTTE MECKLENBURG  
BOARD OF EDUCATION



ORCHARD PARK APARTMENTS  
3805 - 593



BLOCK 2  
PARCEL 14

4254 - 675, 491  
4300 - 366, 513  
4251 - 577

CITY OF CHARLOTTE  
41,201 SQ. FT. = 0.946 AC.

JAMES A. JOHNSON  
& wife MYRTLE  
1933-88

S 43° - 57' - 32" E  
148.86'

4248 - 272  
4251 - 908  
4300 - 516

CITY OF CHARLOTTE  
41,144 SQ. FT. = 0.945 AC.

BLOCK 1  
PARCEL 4

SPURRIER OIL CO.  
2321 - 275

NOTE: Property corners shown  
circled were located by actual  
survey. Bearings are based on  
DEED 3805 - 593



This plat was prepared under my  
supervision *Stephen A. Gilbert*  
N. C. Reg. Surveyor No. L-1785

CITY OF CHARLOTTE NORTH CAROLINA DEPARTMENT OF PUBLIC WORKS ENGINEERING DIVISION		
REVISIONS	THIRD WARD NEIGHBORHOOD STRATEGY AREA	JOB NO. 512- 75-048
	PROPERTY OF	FILE NO.
DRAWN BY A.T.	CITY OF CHARLOTTE	SHEET 1
CHECKED BY <i>[Signature]</i>	DATE OCT. 21, 1981 SCALE 1" = 50'	OF 1
CITY ENGINEER <i>[Signature]</i>		