

I, JACKIE W. BRIM, CERTIFY THAT THIS PLAT WAS PREPARED UNDER MY SUPERVISION AND THAT THE PLAT WAS PREPARED FOR THE PURPOSE OF ACQUISITION AND EASEMENTS ONLY, AND IS NOT INTENDED TO BE A BOUNDARY SURVEY OF PROPERTY SHOWN.

Jackie W. Brim 7-11-2016
 JACKIE W. BRIM, NC P.L.S. L-4348 DATE

STATE OF NORTH CAROLINA
 COUNTY OF MECKLENBURG

REVIEW OFFICER OF MECKLENBURG COUNTY, CERTIFY THAT THE MAP OR PLAT TO WHICH THIS CERTIFICATION IS AFFIXED MEETS ALL STATUTORY REQUIREMENTS FOR RECORDING.

REVIEW OFFICER _____ DATE _____

NOTES:

- 1) BEARINGS AND DISTANCES SHOWN IN PARENTHESES ARE BASED ON MAP 21-682
- 2) TOTAL AREA 8,163 SQ.FT.
- 3) EXISTING PUBLIC STORM DRAINAGE EASEMENT TO BE ACCEPTED BY THE CITY OF CHARLOTTE 613 SQ.FT.
- 4) STORM DRAINAGE EASEMENT 258 SQ.FT.
- 5) TEMPORARY CONSTRUCTION EASEMENT 1,542 SQ.FT.
- 6) AREA REMAINING 8,163 SQ. FT.

CURVE TABLE			
CURVE	LENGTH	RADIUS	CHORD BEARING
C1	30.80'	20.00'	N14° 43' 33"W 27.85'
(C1)	(51.79')	(20.00')	(N14° 44' 51"W) (27.85')

1/2" IRON PIN FOUND
 LOT 8 MAP 21-682

N 64°32'14"W
 49.94' TIE

S 75°58'10"W
 14.33' TIE

(S57°43'56"E 58.00')

(S57°42'13"E 58.00')

(S37°17'22"E 123.13')

(S37°16'04"E 123.13')

(S37°17'22"W 142.43')

(S32°16'04"W 142.43')

(S32°16'04"E 142.43')

(S32°16'04"E 142.43')

(S32°16'04"E 142.43')

(S32°16'04"E 142.43')

(S32°16'04"E 142.43')

(S32°16'04"E 142.43')

(S32°16'04"E 142.43')

(S32°16'04"E 142.43')

(S32°16'04"E 142.43')

(S32°16'04"E 142.43')

(S32°16'04"E 142.43')

(S32°16'04"E 142.43')

(S32°16'04"E 142.43')

(S32°16'04"E 142.43')

(S32°16'04"E 142.43')

(S32°16'04"E 142.43')

(S32°16'04"E 142.43')

(S32°16'04"E 142.43')

(S32°16'04"E 142.43')

(S32°16'04"E 142.43')

(S32°16'04"E 142.43')

(S32°16'04"E 142.43')

(S32°16'04"E 142.43')

(S32°16'04"E 142.43')

(S32°16'04"E 142.43')

(S32°16'04"E 142.43')

(S32°16'04"E 142.43')

(S32°16'04"E 142.43')

(S32°16'04"E 142.43')

(S32°16'04"E 142.43')

(S32°16'04"E 142.43')

(S32°16'04"E 142.43')

(S32°16'04"E 142.43')

TAX ID: 07817216
 EVELYN W. MILES AND HUSBAND
 JOEL MILES, LIFE ESTATE TENANTS
 LESALLE MILES, REMAINDERMAN
 1334 W. 6TH ST.
 DEED BOOK: 5584-846
 AND 30855-83
 MAP BOOK: 21-682

CONCRETE MONUMENT
 NC GRID NAD 83
 (2011)
 NC GRID COORDINATES
 N 547356.100
 E 1446264.436
 CGF: 0.99984255

LEGEND

- CONCRETE MONUMENT
- REBAR OR PIPE FOUND
- CITY TRAVERSE PK NAIL
- CALCULATED POINT
- LINES SURVEYED
- LINES NOT SURVEYED
- STORM DRAINAGE EASEMENT
- TEMPORARY CONSTRUCTION EASEMENT

PREPARED BY:
 CITY OF CHARLOTTE
 ENGINEERING & PROPERTY MANAGEMENT DEPT.
 600 EAST FOURTH STREET
 CHARLOTTE, NC 28208
 704-336-2291



CHARLOTTE

ENGINEERING & PROPERTY MANAGEMENT DEPARTMENT

REVISIONS	JOB NO. SWDES00574	SHEET 1
	FILE NO.	OF 2
SCALE 1" = 40'	OWNER: EVELYN W. MILES AND HUSBAND JOEL MILES, LIFE ESTATE TENANTS LESALLE MILES, REMAINDERMAN 1334 W. 6TH ST. CHARLOTTE, MECKLENBURG CO., NC	
DRAWN BY SCS	CHECKED BY MG SURVEY SUPVR.	
SURVEYED BY: MW	1330 WEST 6TH. STREET STORM WATER MAINTENANCE IMPROVEMENT PROJECT	

DB 31421-654

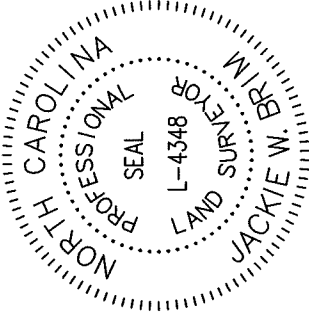
I, JACKIE W. BRIM, CERTIFY THAT THIS PLAT WAS PREPARED UNDER MY SUPERVISION AND THAT THE PLAT WAS PREPARED FOR THE PURPOSE OF ACQUISITION AND EASEMENTS ONLY, AND IS NOT INTENDED TO BE A BOUNDARY SURVEY OF PROPERTY SHOWN.

Jackie W. Brim 7-11-2016
 JACKIE W. BRIM, NC P.L.S. L-4348 DATE

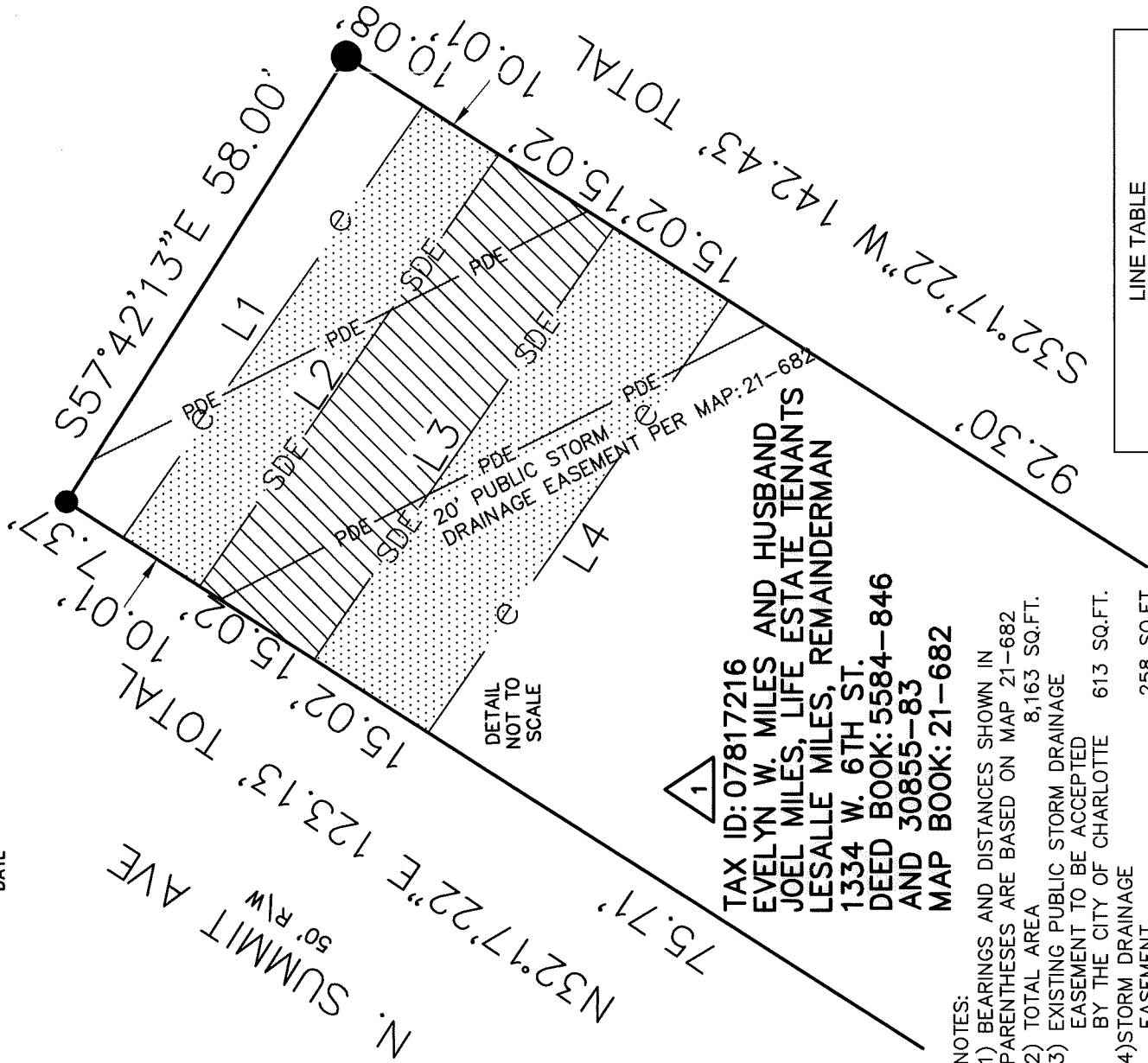
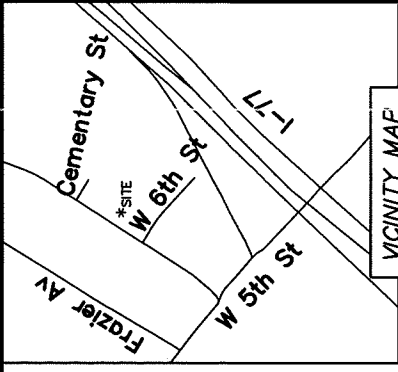
STATE OF NORTH CAROLINA
 COUNTY OF MECKLENBURG

I, Jackie W. Brim REVIEW OFFICER OF
 MECKLENBURG COUNTY, CERTIFY THAT THE MAP OR
 PLAT TO WHICH THIS CERTIFICATION IS AFFIXED
 MEETS ALL STATUTORY REQUIREMENTS FOR
 RECORDING.

REVIEW OFFICER _____ DATE _____



VICINITY MAP
 NOT TO SCALE



TAX ID: 07817216
 EVELYN W. MILES AND HUSBAND
 JOEL MILES, LIFE ESTATE TENANTS
 LESALLE MILES, REMAINDERMAN
 1334 W. 6TH ST.
 DEED BOOK: 5584-846
 AND 30855-83
 MAP BOOK: 21-682

NOTES:

- 1) BEARINGS AND DISTANCES SHOWN IN PARENTHESES ARE BASED ON MAP 21-682
- 2) TOTAL AREA 8,163 SQ.FT.
- 3) EXISTING PUBLIC STORM DRAINAGE EASEMENT TO BE ACCEPTED BY THE CITY OF CHARLOTTE 613 SQ.FT.
- 4) STORM DRAINAGE EASEMENT 258 SQ.FT.
- 5) TEMPORARY CONSTRUCTION EASEMENT 1,542 SQ.FT.
- 6) AREA REMAINING 8,163 SQ. FT.

LEGEND

- CONCRETE MONUMENT
- REBAR OR PIPE FOUND
- CITY TRAVERSE PK NAIL
- CALCULATED POINT
- LINES SURVEYED
- LINES NOT SURVEYED



PREPARED BY:
 CITY OF CHARLOTTE
 ENGINEERING & PROPERTY MANAGEMENT DEPT.
 600 EAST FOURTH STREET
 CHARLOTTE, NC 28208
 704-336-2291

LINE TABLE		
LINE	BEARING	LENGTH
L1	S55° 01' 47"E	58.06'
L2	S55° 01' 48"E	58.06'
L3	N55° 01' 48"W	58.06'
L4	N55° 01' 47"W	58.06'

ENGINEERING & PROPERTY MANAGEMENT DEPARTMENT

1330 WEST 6TH. STREET
 STORM WATER MAINTENANCE
 IMPROVEMENT PROJECT

OWNER: EVELYN W. MILES AND HUSBAND
 JOEL MILES, LIFE ESTATE TENANTS
 LESALLE MILES, REMAINDERMAN
 1334 W. 6TH ST
 CHARLOTTE, MECKLENBURG CO., NC

CHECKED BY: MG SURVEY SUPVR.

JOB NO. SWDES00574
 FILE NO.
 SHEET 2 OF 2

DB31421-654