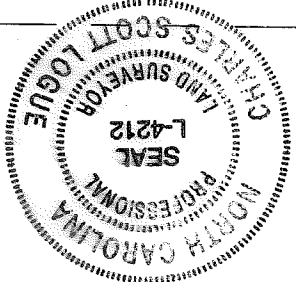
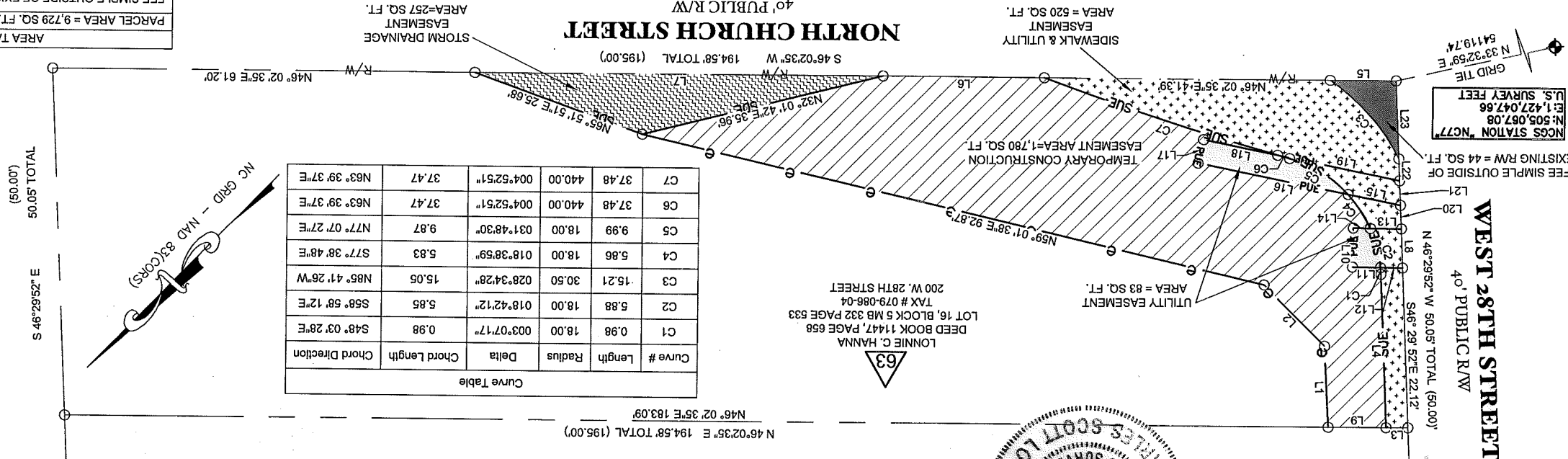


I, CHARLES S. LOGUE, HEREBY CERTIFY THAT THIS MAP WAS PREPARED UNDER MY SUPERVISION AND THAT THE PLAT WAS PREPARED FOR THE PURPOSE OF ACQUISITION AND EASEMENTS ONLY, AND IS NOT INTENDED TO BE A BOUNDARY SURVEY OF PROPERTY SHOWN.

CHARLES S. LOGUE, PLS L-4212 DATE 9/9/2015



**WEST 28TH STREET**  
40' PUBLIC R/W



NGCS STATION "NC77"  
N: 505.067, 08  
E: 1,427.047, 66  
U.S. SURVEY FEET

GRID TIE  
N 33°32'59" E  
S 419.74

**LEGEND**

- Temporary Construction Easement
- Sidewalk Utility Easement
- Storm Drainage Easement
- Utility Easement
- Sidewalk & Utility Easement
- Storm Drainage Easement
- Free Simple Area
- Calculated Point
- Found Iron Pin
- Bearing And Distance Per Plat (100.00')

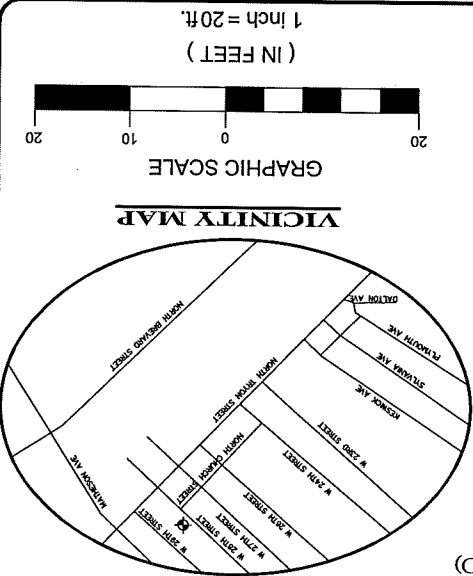
Line Table

Line #	Length	Direction
L1	11.67	S47° 08' 01"E
L2	12.42	S89° 03' 43"E
L3	3.17	N46° 02' 35"E
L4	22.11	S46° 29' 49"E
L5	9.52	N46° 02' 35"E
L6	23.43	N46° 02' 35"E
L7	59.05	N46° 02' 35"E
L8	5.64	S46° 29' 52"E
L9	8.33	N46° 02' 35"E
L10	5.63	S43° 15' 11"E
L11	4.01	N46° 44' 49"E
L12	3.20	N46° 44' 49"E

Line Table

Line #	Length	Direction
L13	4.46	S46° 44' 49"W
L14	2.43	S46° 44' 49"W
L15	7.70	S57° 21' 57"W
L16	22.11	S57° 21' 57"W
L17	3.46	N31° 42' 36"W
L18	10.96	N57° 21' 57"E
L19	17.94	N57° 21' 57"E
L20	3.40	S46° 29' 52"E
L21	3.56	S46° 29' 52"E
L22	3.15	S46° 29' 52"E
L23	11.24	S46° 29' 52"E

**NORTH CHURCH STREET**  
40' PUBLIC R/W  
MAP BOOK 332, PAGE 533 (NOT OPENED)



(IN FEET)  
1 inch = 20 ft.

Curve Table

Curve #	Length	Radius	Delta	Chord Length	Chord Direction
C1	0.98	18.00	003°07'17"	0.98	S48° 03' 28"E
C2	5.88	18.00	018°42'12"	5.85	S56° 58' 12"E
C3	15.21	30.50	028°34'28"	15.05	N85° 41' 26"W
C4	5.86	18.00	018°38'59"	5.83	S77° 38' 48"E
C5	9.99	18.00	031°48'30"	9.87	N77° 07' 27"E
C6	37.48	440.00	004°52'51"	37.47	N63° 39' 37"E
C7	37.48	440.00	004°52'51"	37.47	N63° 39' 37"E

AREA TABLE

PARCEL AREA = 9,729 SQ. FT.
FEE SIMPLE OUTSIDE OF EXISTING R/W = 44 SQ. FT.
UTILITY EASEMENT = 83 SQ. FT.
STORM DRAINAGE EASEMENT = 257 SQ. FT.
TEMPORARY CONSTRUCTION EASEMENT = 1,780 SQ. FT.
SIDEWALK & UTILITY EASEMENT = 620 SQ. FT.
AREA REMAINING = 9,685 SQ. FT.

**THE SURVEY COMPANY, INC.**  
ENGINEERING & PROPERTY MANAGEMENT  
CHARLOTTE

Parcel # 63  
LONNIE C. HANNA  
200 W. 28TH STREET  
TAX ID # 079-086-04

Project Number: 512-10-039  
NORTH TRYON BUS CORRIDOR  
Sheet 1 of 1

DATE 09/09/15  
SCALE 1" = 30'

PARCEL 63.DWG  
PATH

STATE OF NORTH CAROLINA  
COUNTY OF MECKLENBURG  
REVIEW OFFICER OF MECKLENBURG COUNTY  
REVIEW OFFICER OF MECKLENBURG COUNTY, CERTIFY THAT THIS MAP OR PLAT TO WHICH THIS CERTIFICATION IS AFFIXED MEETS ALL STATUTORY REQUIREMENTS FOR RECORDING.  
REVIEW OFFICER \_\_\_\_\_ DATE \_\_\_\_\_

62  
STEVEN W. BOGER  
DEED BOOK 5896, PAGE 943  
LOT 15, BLOCK 5 MB 332 PAGE 533  
TAX # 079-086-03  
204 W. 28TH STREET

10' ALLEY  
MB 332, PAGE 533

S 46°29'52" E  
(50.00')

DB 32054-745