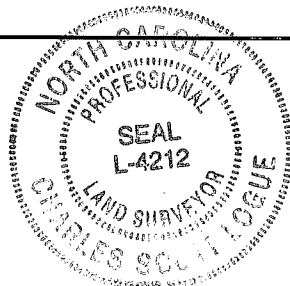


I, CHARLES S. LOGUE, HEREBY CERTIFY THAT THIS MAP WAS PREPARED UNDER MY SUPERVISION AND THAT THE PLAT WAS PREPARED FOR THE PURPOSE OF ACQUISITION AND EASEMENTS ONLY, AND IS NOT INTENDED TO BE A BOUNDARY SURVEY OF PROPERTY SHOWN.

CHARLES S. LOGUE, PLS L-4212 DATE 2/26/2016

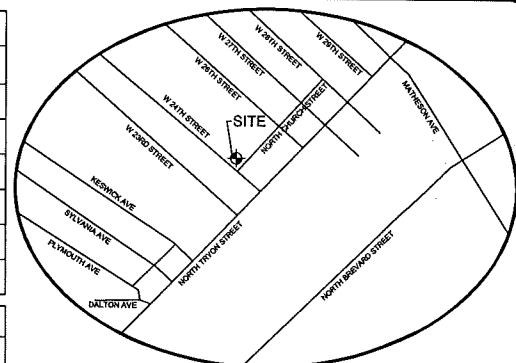


STATE OF NORTH CAROLINA  
COUNTY OF MECKLENBURG

REVIEW OFFICER OF MECKLENBURG COUNTY, CERTIFY THAT THIS MAP OR PLAT TO WHICH THIS CERTIFICATION IS AFFIXED MEETS ALL STATUTORY REQUIREMENTS FOR RECORDING.

REVIEW OFFICER DATE

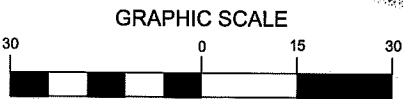
Curve Table					
Curve #	Length	Radius	Delta	Chord Length	Chord Direction
C1	1.40	30.94	002°35'41"	1.40	N85° 38' 59"W
C2	9.94	23.50	024°13'52"	9.86	S86° 19' 27"E
C3	1.94	23.50	004°43'30"	1.94	N79° 11' 52"E
C4	24.35	30.94	045°05'15"	23.73	S70° 30' 33"W
C5	3.13	30.94	005°47'53"	3.13	N81° 27' 12"W
C13	11.50	23.50	028°02'38"	11.39	N62° 48' 48"E



VICINITY MAP

LEGEND

Temporary Construction Easement	-----
Utility Easement	----- PUE -----
New Right of Way Line	----- R/W -----
Permanent Shelter Easement	----- PSE ----- PSE -----
Sidewalk Utility Easement	----- SUE ----- SUE -----
Water Line Easement	----- WLE ----- WLE -----
Storm Drainage Easement	----- SDE -----
Existing Right Of Way Line	----- R/W -----
Existing Property Line	----- P/L -----
Utility Easement	-----
Permanent Shelter Easement	-----
Fee Simple Area	-----
Temporary Construction Easement	-----
Water Line Easement	-----
Sidewalk & Utility Easement	-----
Storm Drainage Easement	-----
Calculated Point	○
Found Iron Pin	⊙
Bearing And Distance Per Plat	(N42°36'30"W)



(IN FEET)  
1 inch = 30ft.

NCGS STA. "NC77"  
N:505,067.08  
E:1,427,047.66  
U.S. SURVEY FEET

GRID DISTANCE  
CGF: 0.99984324  
N33° 08' 38"E 52602.03'

FOUND #4 REBAR

Line Table		
Line #	Length	Direction
L2	19.23	S47° 27' 13"E
L3	1.77	S47° 27' 13"E
L4	23.68	S47° 27' 13"E
L5	6.09	N10° 54' 34"E
L6	10.32	N42° 52' 40"E
L7	10.99	N42° 52' 40"E
L8	3.59	N42° 52' 47"E
L9	5.10	S87° 32' 52"E
L10	9.71	N42° 52' 40"E
L11	6.41	N42° 52' 47"E

Line Table		
Line #	Length	Direction
L12	7.12	N47° 07' 13"W
L13	3.88	N47° 07' 13"W
L15	4.00	S47° 07' 15"E
L16	2.63	S47° 07' 13"E
L17	4.37	S47° 07' 13"E
L18	5.50	N47° 07' 14"W
L19	27.37	N42° 52' 40"E
L20	5.53	N47° 07' 13"W
L21	101.09	N42° 52' 40"E
L22	8.04	N47° 01' 41"W

Line Table		
Line #	Length	Direction
L23	3.92	N47° 01' 41"W
L24	0.31	N27° 14' 15"E
L25	2.71	N47° 01' 41"W
L26	4.37	N47° 01' 41"W
L27	9.24	N47° 01' 41"W
L28	11.42	N42° 32' 47"E
L29	7.97	S47° 10' 11"E
L30	9.63	S42° 32' 47"W
L31	3.60	N47° 27' 13"W

WEST 24TH STREET  
VARIABLE WIDTH PUBLIC R/W

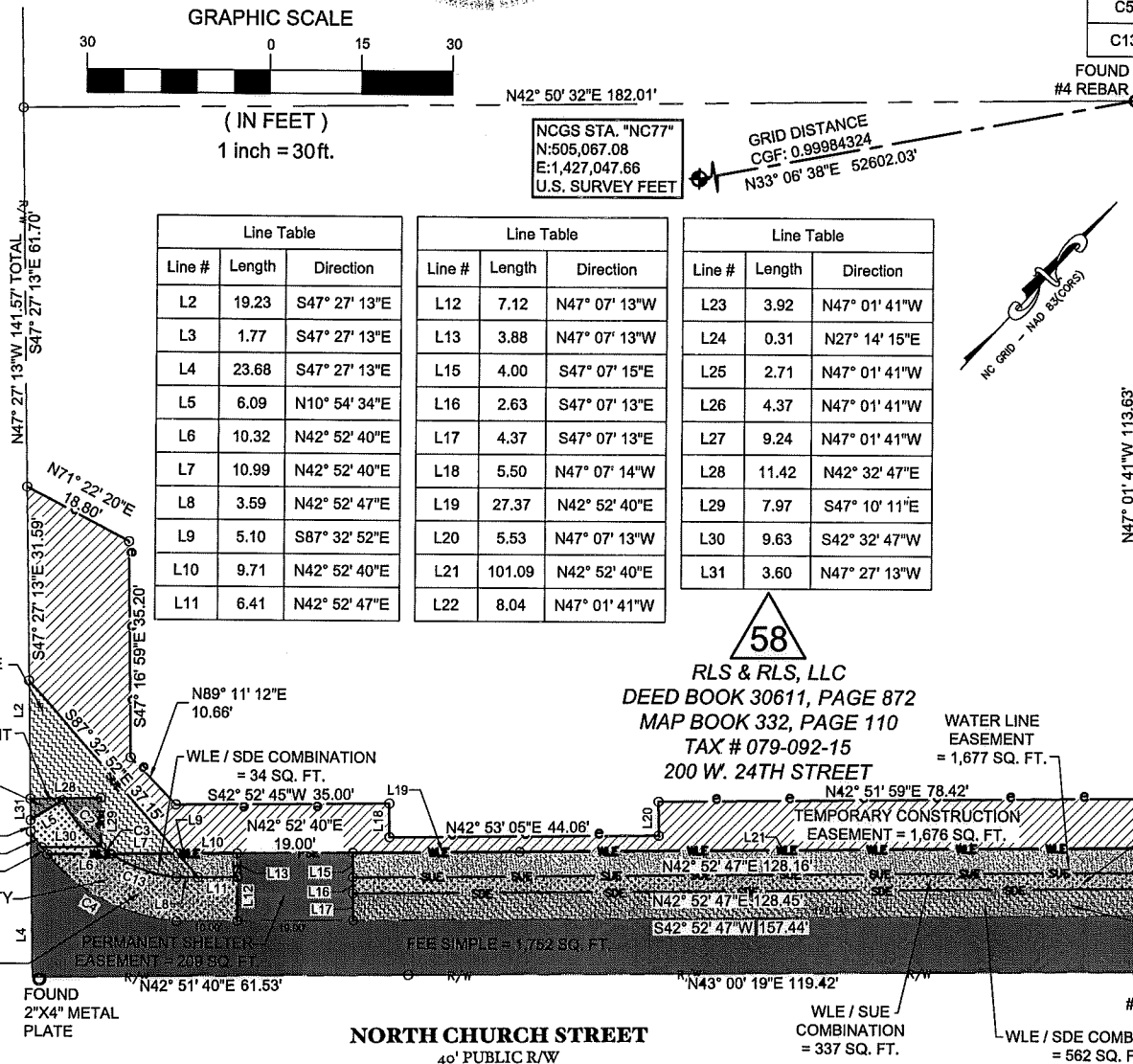
STORM DRAINAGE EASEMENT = 306 SQ. FT.

UTILITY EASEMENT = 39 SQ. FT.

PUE/SDE COMBINATION = 39 SQ. FT.

SIDEWALK UTILITY EASEMENT = 258 SQ. FT.

WLE / SUE COMBINATION = 199 SQ. FT.



AREA TABLE	
PARCEL AREA	= 25,695 SQ. FT.
FEE SIMPLE OUTSIDE OF EXISTING R/W	= 1,752 SQ. FT.
STORM DRAINAGE EASEMENT	= 868 SQ. FT.
UTILITY EASEMENT	= 39 SQ. FT.
SIDEWALK UTILITY EASEMENT	= 595 SQ. FT.
PERMANENT SHELTER EASEMENT	= 209 SQ. FT.
WLE / SUE COMBINATION	= 536 SQ. FT.
WLE / SDE COMBINATION	= 596 SQ. FT.
PUE / SDE COMBINATION	= 39 SQ. FT.
TEMPORARY CONSTRUCTION EASEMENT	= 1,676 SQ. FT.
WATER LINE EASEMENT	= 1,677 SQ. FT.
AREA REMAINING	= 23,943 SQ. FT.

58  
RLS & RLS, LLC  
DEED BOOK 30611, PAGE 872  
MAP BOOK 332, PAGE 110  
TAX # 079-092-15  
200 W. 24TH STREET

2  
MV TRYON II LLC  
DEED BOOK 24165, PAGE 994  
TAX # 079-092-01

REVISION NO.	DATE	DESCRIPTION
2	02/26/2016	OWNER INFO
1	10/19/2015	EASEMENTS

**CHARLOTTE**  
ENGINEERING & PROPERTY  
MANAGEMENT

**RLS & RLS, LLC**  
200 W. 24TH STREET  
Tax ID # 079-092-15

Parcel # 58

**NORTH TRYON  
BUSINESS CORRIDOR**

Project Number: 512-10-039

SHEET 1 OF 1

PARCEL 58.DWG  
PATH

1" = 30'  
SCALE

09/09/15  
DATE

DB 30810 - 334 & DB 30810 - 340