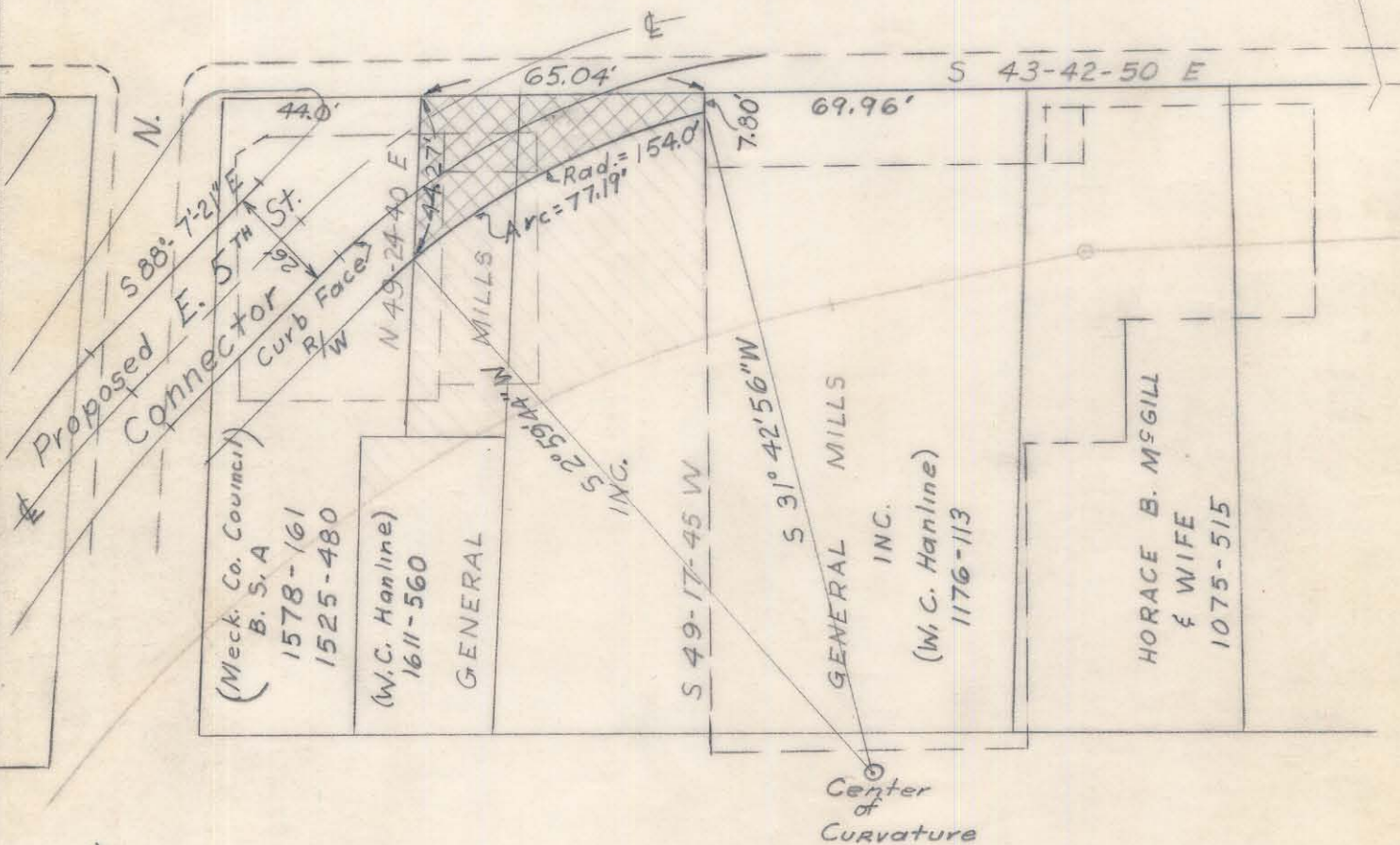


Long St.

10907


Sugar Creek

East Seventh Street



1309 Sq Ft
 Reqd. from General Mills Inc. Prop.

Legend

 Minimum R/W
 5th Street

E. 5th St. To 7th St.
 ⚡ Curve Data
 $\Delta = 40^{\circ}-2'$
 $R = 177.0'$
 $L = 123.67'$
 $T = 64.67'$

Drawn from a map of this office dated April 11, 1961,
 corrected Sept. 13, 1961, and entitled "Proposed
 Widening & Extension of East 5th & 6th Streets"

CITY OF CHARLOTTE		SHEET NO.
NORTH CAROLINA		
ENGINEERING DEPARTMENT		
DESCRIPTION: <u>E. Fifth Street</u>		
<u>Connector - R/W Requirements</u>		
<u>At General Mills Property</u>		
DATE: <u>Feb 8, 1962</u> SCALE: <u>1" = 40'</u>		
DRAWN BY: <u>J.N.B.</u> CITY ENGINEER		

File No. A-7-H-23

80-10