

SEVENTH STREET

R/W MON.

S 46° 04' 32" E

78.31'

R/W MON.

S 02° 28' 38" E

37.63'

R/W MON.

DEED 3497-531 &
N.C.S.H.C. R/W MAP DATED 7-1-70
(NORTHWEST EXPRESSWAY)

G. H. WATTS REALTY CO.



N 38° 20' 03" E 75.11'

(103.61')

N 43° 31' 18" W

102.27'

102.68' total

152'

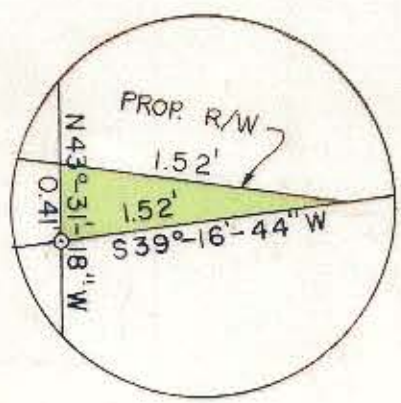
S 39° 16' 44" W 53.55'

52.03'

KINGS DRIVE

SEE
DETAIL

1.52'
0.41'
35.5'



DETAIL

L. A. FURR

PROP. R/W

NOTE: PROPERTY CORNERS SHOWN CIRCLED WERE LOCATED BY ACTUAL SURVEY. BEARINGS ARE BASED ON NORTH CAROLINA COORDINATE SYSTEM.
THIS PLAT WAS PREPARED UNDER MY SUPERVISION.

Stephen A. Gilbert, P.E.

N.C. REG. ENGINEER NO. 6233

REVISED 7-25-74 SAG

TOTAL AREA 7594.23sq.ft. 0.17 ac.
AREA TAKEN 1.07 sq.ft. 0 ac.
AREA REMAINING LEFT 7593.16sq.ft. 0.17 ac.

RALPH WHITEHEAD & ASSOCIATES CONSULTING ENGINEERS CHARLOTTE, N.C.	
CITY OF CHARLOTTE PROJECT NO.	
PROPOSED R/W	
KINGS DRIVE RELOCATION	R/W 85'
PROPERTY OF G. H. WATTS REALTY CO.	
DRAWN BY JMD	DATE 5-10-74
CHECKED BY JWC	DATE 5-14-74
SCALE 1" = 20'	SHEET 17 OF 21
	DWG. NO. 1202.71-P

030-131-03