

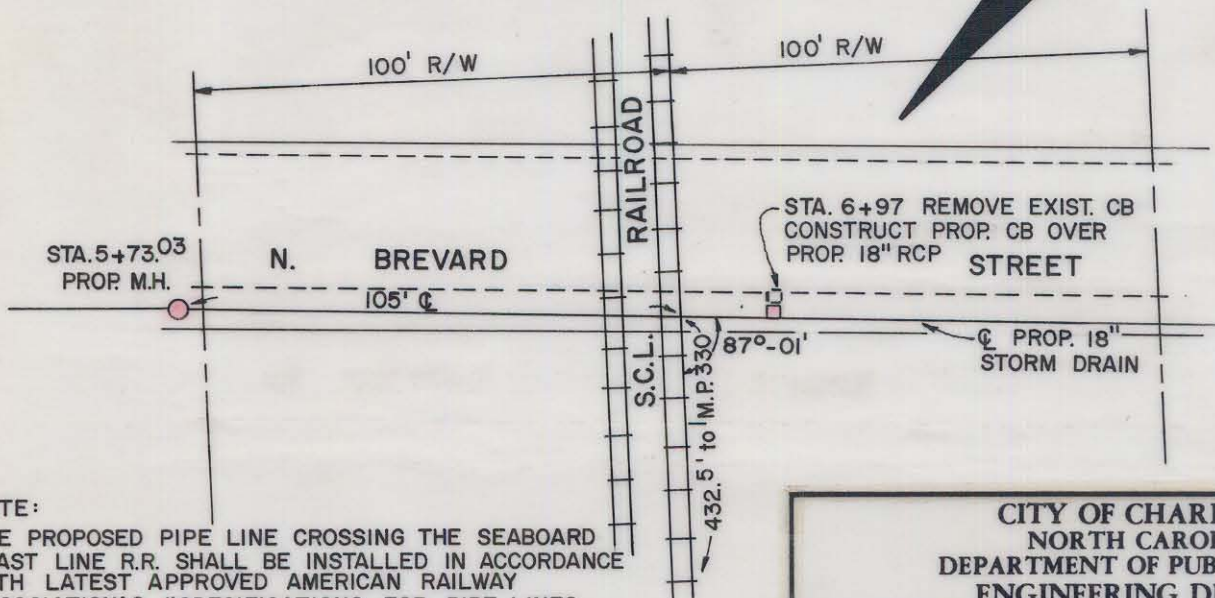
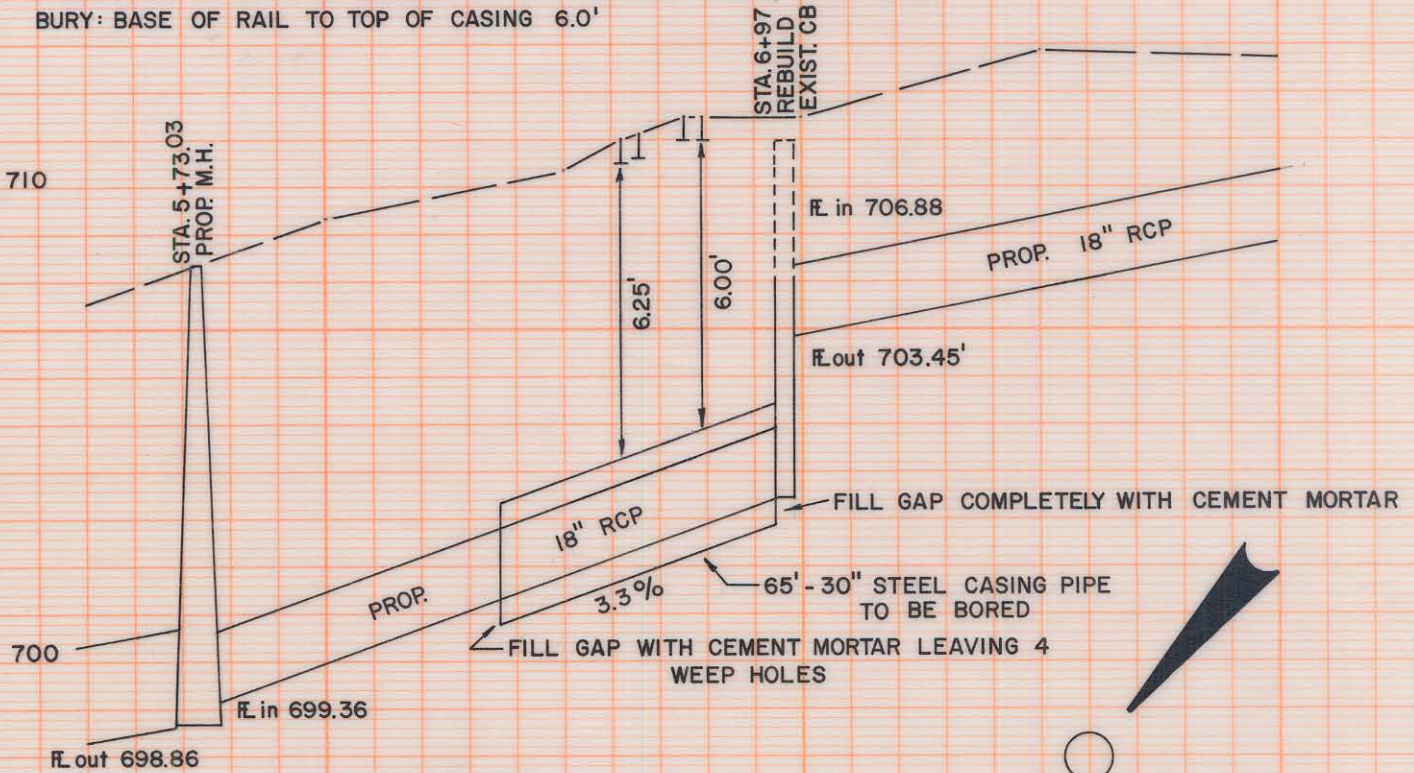
CONTENTS TO BE HANDLED
 OUTSIDE DIAMETER
 PIPE MATERIAL
 SPECIFICATION AND GRADE
 WALL THICKNESS
 ACTUAL WORKING PRESSURE
 TYPE OF JOINT
 METHOD OF INSTALLATION

CARRIER PIPE
 STORM DRAINAGE
 24"
 REINFORCED CONCRETE
 CLASS 3
 2.5"
 GRAVITY
 TONGUE and GROOVE
 JACKING

CASING PIPE

 31.0"
 STEEL
 A-139 STRUCT. GRADE
 0.50"
 GRAVITY
 WELDED
 BORING

PROTECTION AT ENDS OF CASING: CEMENT GROUT, BOTH ENDS
 BURY: BASE OF RAIL TO TOP OF CASING 6.0'



NOTE:
 THE PROPOSED PIPE LINE CROSSING THE SEABOARD COAST LINE R.R. SHALL BE INSTALLED IN ACCORDANCE WITH LATEST APPROVED AMERICAN RAILWAY ASSOCIATION'S "SPECIFICATIONS FOR PIPE LINES FOR CONVEYING FLAMMABLE AND NONFLAMMABLE SUBSTANCES."

SCALES: PROFILE, VERT. 1" = 4' HOR. 1" = 40'
 PLAN, 1" = 40"

081-035/045

CITY OF CHARLOTTE NORTH CAROLINA DEPARTMENT OF PUBLIC WORKS ENGINEERING DIVISION		JOB NO. 512- 72-184
REVISIONS	STORM DRAIN SEWER ALONG N. BREVARD STREET	FILE NO. RW-74
DRAWN BY RWM	SEABOARD COAST LINE RAILROAD	SHEET 1
CHECKED BY JSS	DATE MAY, 1974	OF 1
CITY ENGINEER	SCALE S SHOWN	

Void
5-18-74
955