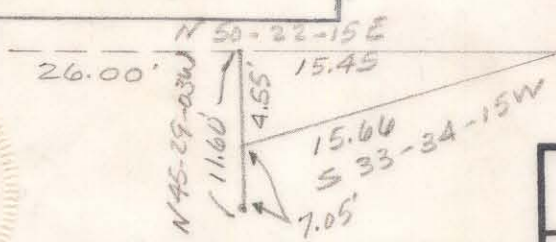


Approved by *Charles E. Owens*  
R/W Agent



This plat was prepared under my supervision *David M. Lucas*  
N.C. Reg. Engineer No *2737*



CITY OF CHARLOTTE NORTH CAROLINA ENGINEERING DEPARTMENT		JOB NO.
REVISIONS	Additional Right-of-Way N. Davidson @ E. 12 <sup>th</sup> St.	467
DRAWN BY <i>WITE</i>	Property of <b>WALTER B. FINCHER</b>	FILE NO.
CHECKED BY <i>CDR</i> by <i>D. Lucas</i> CITY ENGINEER	DATE <i>Jan. 1965</i>	SHEET
	SCALE <i>1" = 20'</i>	OF

81-087-01