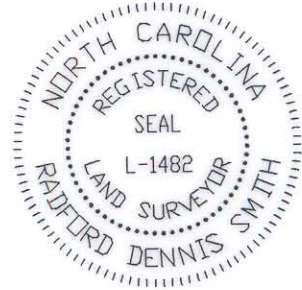
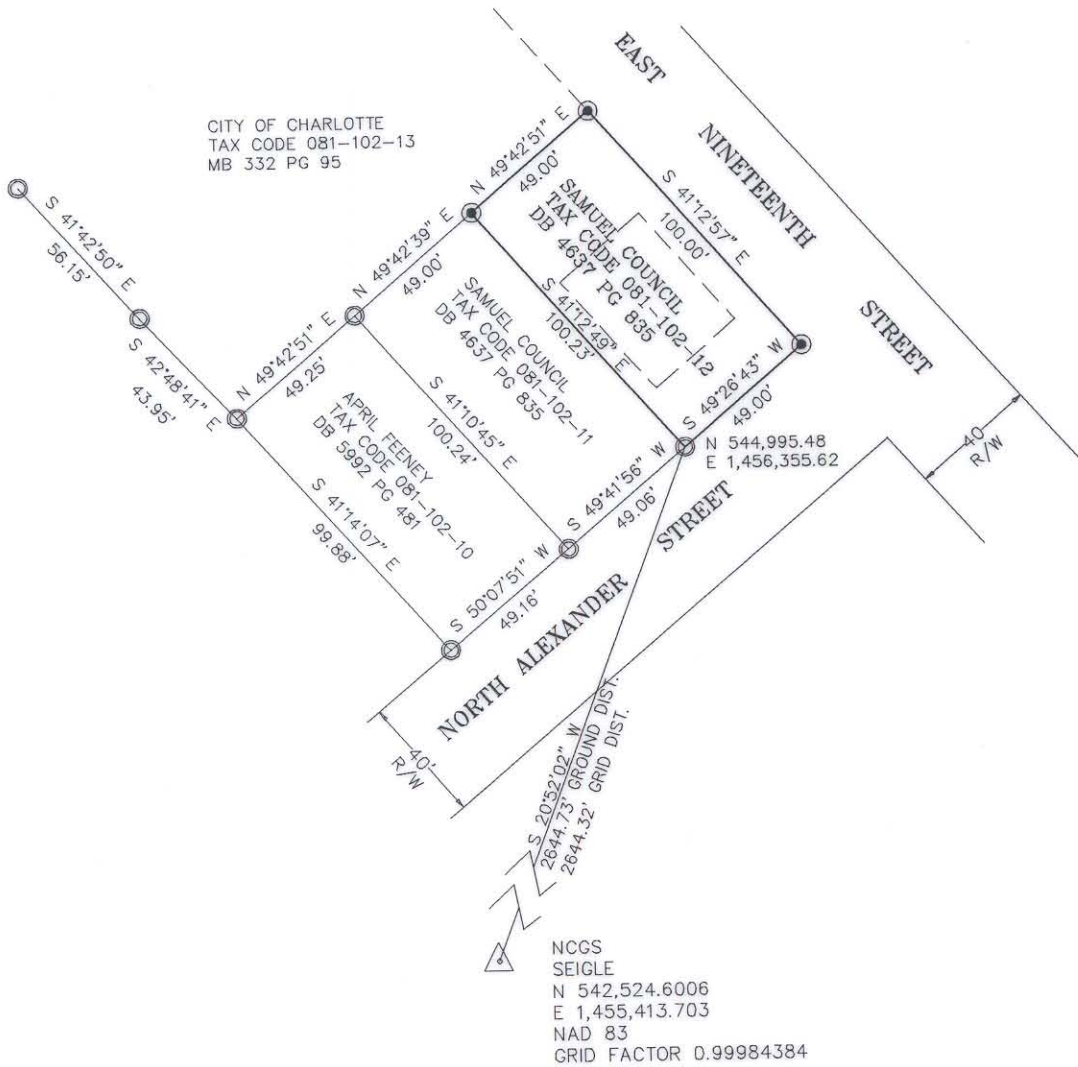


I, R. DENNIS SMITH CERTIFY THAT THIS PLAT WAS PREPARED FROM AN ACTUAL FIELD SURVEY DONE UNDER MY SUPERVISION HAVING A RATIO OF PRECISION OF 1:10,000. AND THAT THIS PLAT WAS PREPARED UNDER MY SUPERVISION.

R. Dennis Smith 6-17-93
 N.C.R.L.S. L-1482 DATE



VICINITY MAP
 NOT TO SCALE



CITY OF CHARLOTTE
 TAX CODE 081-102-13
 MB 332 PG 95

NCGS
 SEIGLE
 N 542,524.6006
 E 1,455,413.703
 NAD 83
 GRID FACTOR 0.99984384

GRAPHIC SCALE



(IN FEET)
 1 inch = 60 ft.

NOTES:

- 1) PRESENT ZONING R3
- 2) 20' FRONT SETBACK, 35' REAR SETBACK,
 10' STEEET SIDE SETBACK,
 AND 6' PROPERTY SIDE SETBACK.
- 3) AREA: 4,905 SQ. FT.
 .113 AC.

LEGEND

- IRON PIN FOUND ○
- IRON PIN SET ●
- CONC. MON. FOUND ▲

PREPARED BY:
 CITY OF CHARLOTTE
 ENGINEERING DEPARTMENT
 600 EAST FOURTH STREET
 CHARLOTTE, NC 28202
 704-336-2291

CHARLOTTE ENGINEERING DEPARTMENT		
REVISIONS	BOUNDARY SURVEY FOR CITY OF CHARLOTTE	JOB NO. 93095
DRAWN BY DB	PROPERTY OF SAMUEL COUNCIL CHARLOTTE, MECK. CO., NC	FILE NO.
CHECKED BY DHS		COUNCIL
<i>RDS</i> SURVEY SUPVR.	DATE 06-11-93	SHEET 1
	SCALE 1"=60'	OF 1

81-10