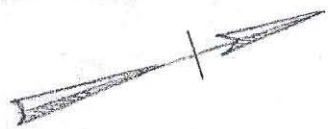


Topo # 0907



Piedmont Junior High School



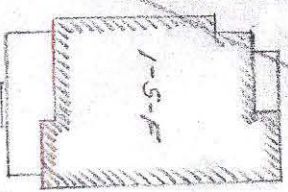
City of Charlotte, N.C.
614-123

see map Dated Dec 18-46

EAST TENTH STREET

N. 70° 55' W. 490

N. 36° 05' E. 6322



9787

252.55

Proposed New Widening Line

56.51

4974

4843

30

Prop. Work
Prop. Curbs

Proposed New Line
N. 47° 15' E. 12087
0.037 Acre
S. 43° 40' W. 18294
Disputed Line

Theodore Smith
654-15

550

S. 64° 28' E.

S. 43° 40' W.

VAN DERBURG ST.

Map Showing a Revised Dividing Lot Line and a Part of Piedmont Junior High School Property to be Deeded or Quitclaimed by the CITY OF CHARLOTTE, N.C. to THEODORE SMITH on East 10th Street Scale 1" = 40' April 22, 1941. Office of City Engineer.

81-114-15