

Total Area	72,602.	Sq. Ft.	1,667 Ac.
Area Taken	455.	Sq. Ft.	0.010 Ac.
Area Remaining	72,147.	Sq. Ft.	1,657 Ac.

TRACT I



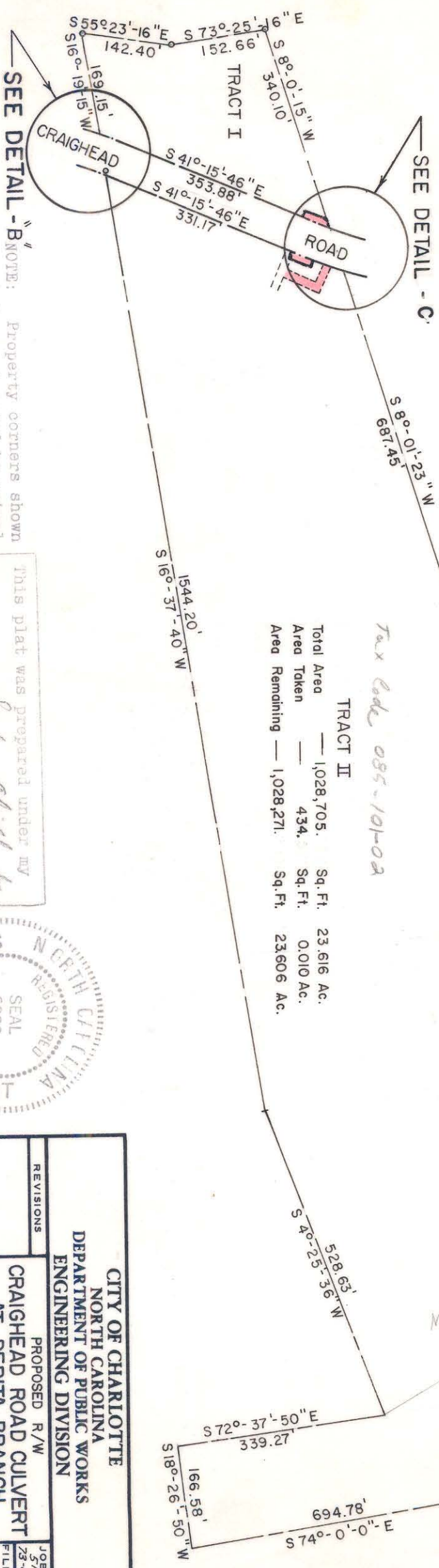
COMBINED AREAS			
Total Area	1,101,544	Sq. Ft.	25,288 Ac.
Area Taken	889	Sq. Ft.	.020 Ac.
Area Remaining	1,100,655	Sq. Ft.	25,268 Ac.

TRACT III	
Total Area	237. Sq. Ft. 0.005 Ac.

SEE DETAIL - "A"

Tax Code 085-101-02

TRACT II			
Total Area	1,028,705.	Sq. Ft.	23,616 Ac.
Area Taken	434.	Sq. Ft.	0.010 Ac.
Area Remaining	1,028,271.	Sq. Ft.	23,606 Ac.



SEE DETAIL - "B"

NOTE: Property corners shown circled were located by actual survey. Bearings are based on

MAP OF B.C. DAVIDSON ESTATE BY DAVID R. LANTER DEC. '61.

This plat was prepared under my supervision *Stephen A. Gilbert* N.C. Reg. Engineer No. 6233



REVISIONS CITY OF CHARLOTTE NORTH CAROLINA DEPARTMENT OF PUBLIC WORKS ENGINEERING DIVISION		PROPOSED R/W CRAIGHEAD ROAD CULVERT AT DERITA BRANCH PROPERTY OF MARY L. and ALICE C. DAVIDSON	
DRAWN BY M.A.S. CHECKED BY S.K. CR LANTER	DATE APRIL / 76 SCALE 1" = 200'	JOB NO. 3-23-69 FILE NO. 165	SHEET 1 OF 3

087-041-07 RND 85-101-02