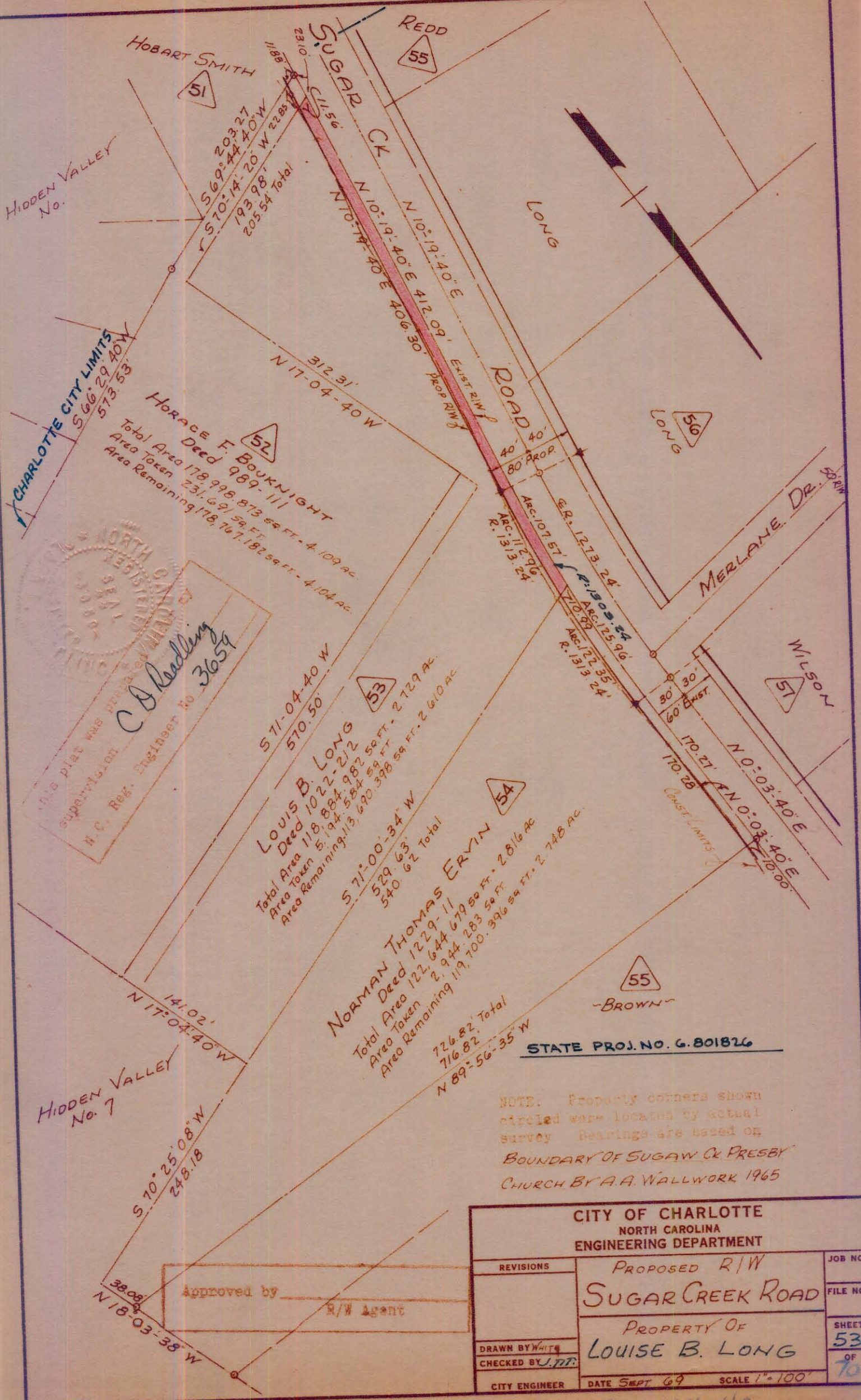


87-06



THIS PLAT WAS PREPARED UNDER THE SUPERVISION OF
C.D. Reading
 N.C. Reg. Engineer No. 3654

CITY OF CHARLOTTE NORTH CAROLINA ENGINEERING DEPARTMENT		
REVISIONS	PROPOSED R/W	JOB NO.
	SUGAR CREEK ROAD	FILE NO.
	PROPERTY OF	SHEET
	LOUISE B. LONG	53
DRAWN BY White		OF
CHECKED BY J.P.T.		70
CITY ENGINEER	DATE SEPT 69	SCALE 1"=100'

089-064-40