

I, DAVID H. SNIDER, CERTIFY THAT THIS PLAT WAS PREPARED UNDER MY SUPERVISION AND THAT THE PLAT WAS PREPARED FOR THE PURPOSE OF ACQUISITION AND EASEMENTS ONLY, AND IS NOT INTENDED TO BE A BOUNDARY SURVEY OF PROPERTY SHOWN.

*David H. Snider* 2/24/14  
 DAVID H. SNIDER, NC P.L.S. L-2942 DATE

TAX CODE: 093-023-33 DB 17673 PG 734  
 TAX CODE: 093-023-30 DB 17673 PG 021  
 TAX CODE: 093-023-29 DB 26643 PG 320  
 TAX CODE: 093-023-28 DB 17673 PG 613  
 TAX CODE: 093-023-27 DB 23674 PG 046  
 TAX CODE: 093-023-26 DB 17751 PG 579  
 TAX CODE: 093-042-01 DB 4451 PG 585  
 TAX CODE: 093-042-03 DB 26785 PG 590  
 TAX CODE: 093-042-04 DB 5332 PG 917  
 TAX CODE: 093-042-05 DB 9759 PG 292  
 TAX CODE: 093-042-06 DB 25730 PG 534  
 TAX CODE: 093-042-07 DB 7834 PG 769  
 TAX CODE: 093-042-08 DB 21147 PG 417  
 TAX CODE: 093-042-09 DB 11754 PG 170  
 TAX CODE: 093-042-10 DB 5597 PG 652  
 TAX CODE: 093-042-11 DB 19104 PG 529  
 TAX CODE: 093-042-12 DB 24109 PG 466  
 TAX CODE: 093-042-13 DB 26353 PG 656  
 TAX CODE: 093-042-14 DB 17775 PG 877  
 TAX CODE: 093-042-27 DB 24047 PG 307  
 TAX CODE: 093-042-28 DB 23343 PG 808  
 TAX CODE: 093-042-28 DB 7827 PG 215  
 TAX CODE: 093-042-33 DB 5373 PG 845  
 TAX CODE: 093-042-34 DB 9103 PG 514  
 TAX CODE: 093-042-35 DB 11266 PG 747  
 TAX CODE: 093-042-35 DB 8312 PG 408  
 TAX CODE: 093-042-37 DB 14071 PG 826  
 TAX CODE: 093-042-38 DB 23247 PG 215  
 TAX CODE: 093-042-38 DB 6787 PG 781  
 TAX CODE: 093-042-40 DB 18441 PG 315  
 TAX CODE: 093-042-43 DB 13911 PG 380  
 TAX CODE: 093-042-44 DB 18876 PG 159  
 TAX CODE: 093-081-17 DB 18334 PG 527  
 TAX CODE: 093-081-01 DB 4380 PG 136  
 TAX CODE: 093-081-03 DB 25926 PG 473

MECKLENBURG COUNTY & THE CHARLOTTE-MECKLENBURG BOARD OF EDUCATION  
 TAX CODE: 093-042-51  
 DB 28011 PG 285  
 DB 23360 PG 552  
 LESS R/W DB 2692 PG 133  
 1100 EASTWAY DRIVE

STATE OF NORTH CAROLINA  
 COUNTY OF MECKLENBURG

I, \_\_\_\_\_ REVIEW OFFICER OF MECKLENBURG COUNTY, CERTIFY THAT THE MAP OR PLAT TO WHICH THIS CERTIFICATION IS AFFIXED MEETS ALL STATUTORY REQUIREMENTS FOR RECORDING.

REVIEW OFFICER \_\_\_\_\_ DATE \_\_\_\_\_

PREPARED BY:  
 CITY OF CHARLOTTE  
 ENGINEERING & PROPERTY MANAGEMENT DEPARTMENT  
 600 EAST FOURTH STREET  
 CHARLOTTE, NC 28202  
 704-336-2291

EAST SUGAR CREEK ROAD  
 R/W VARIES

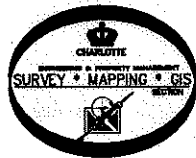
EASTWAY DRIVE  
 R/W VARIES

SEE DETAIL "B"  
 SHEET 3 OF 3

SEE DETAIL "A"  
 SHEET 2 OF 3

SEE DETAIL "C" & "D"  
 SHEET 3 OF 3

NC GRID COORDINATES  
 N.=546832.07  
 E.=1467741.92  
 CGF: 0.99984196



NOTES:

- 1.) BEARINGS AND DISTANCES SHOWN IN PARENTHESES ARE BASED ON RECORDED MAP INFORMATION
- 2.) COMPUTED PROJECT DISTANCE \_\_\_\_\_\*
- 3.) REFERENCE UNRECORDED SURVEY BY R.B. PHARR & ASSOC. DATED MARCH 24, 2000 FOR CHARLOTTE-MECKLENBURG SCHOOLS FILE NO. W-2538, JOB NO. 75721 & NCDOT ROADWAY PLANS 8.2722501
- 4.) TOTAL AREA 2,634,926 SQ. FT.
- 5.) TEMPORARY CONSTRUCTION EASEMENT 7,331 SQ. FT.
- 6.) UTILITY EASEMENT 122 SQ. FT.
- 7.) STORM DRAINAGE EASEMENT 108 SQ. FT.
- 8.) FEE SIMPLE OUTSIDE EXISTING R/W 5,074 SQ. FT.
- 9.) UTILITY EASEMENT OVERLAPS TCE 96 SQ. FT.
- 10.) STORM DRAINAGE EASEMENT OVERLAPS TCE 108 SQ. FT.
- 11.) AREA REMAINING 2,629,852 SQ. FT.

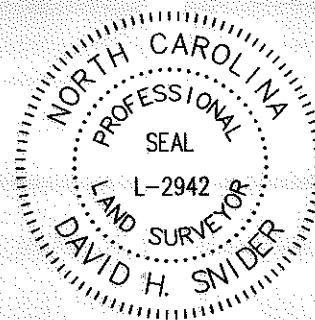
CHARLOTTE ENGINEERING & PROPERTY MANAGEMENT DEPARTMENT								
<table border="1"> <thead> <tr> <th>REVISIONS</th> <th>JOB NO.</th> </tr> </thead> <tbody> <tr> <td>1. added detail C&amp;D note to sht. 1 of 3 and revised ownership name 2-05-14</td> <td>512-12-046</td> </tr> </tbody> </table>	REVISIONS	JOB NO.	1. added detail C&D note to sht. 1 of 3 and revised ownership name 2-05-14	512-12-046	SUGAR CREEK RD./EASTWAY DR. INTERSECTION AND SIDEWALK IMPROVEMENTS	211042		
REVISIONS	JOB NO.							
1. added detail C&D note to sht. 1 of 3 and revised ownership name 2-05-14	512-12-046							
<table border="1"> <thead> <tr> <th>SCALE</th> <th>SHEET</th> </tr> </thead> <tbody> <tr> <td>0 1" = 300' 1"</td> <td>1</td> </tr> </tbody> </table>	SCALE	SHEET	0 1" = 300' 1"	1	PROPERTY OF MECKLENBURG COUNTY & THE CHARLOTTE-MECKLENBURG BOARD OF EDUCATION CHARLOTTE, MECKLENBURG CO., NC	OF 3		
SCALE	SHEET							
0 1" = 300' 1"	1							
<table border="1"> <thead> <tr> <th>DRAWN BY</th> <th>CHECKED BY</th> <th>SURVEY SUPVR.</th> </tr> </thead> <tbody> <tr> <td>G.F.</td> <td>DHS</td> <td><i>DM</i></td> </tr> </tbody> </table>	DRAWN BY	CHECKED BY	SURVEY SUPVR.	G.F.	DHS	<i>DM</i>	DATE	
DRAWN BY	CHECKED BY	SURVEY SUPVR.						
G.F.	DHS	<i>DM</i>						

ACQUISITION BY DB 29126 PG 673

ACQUISITION BY DB 29124 PG 264

# DETAIL "A" N.T.S.

I, DAVID H. SNIDER, CERTIFY THAT THIS PLAT WAS PREPARED UNDER MY SUPERVISION AND THAT THE PLAT WAS PREPARED FOR THE PURPOSE OF ACQUISITION AND EASEMENTS ONLY, AND IS NOT INTENDED TO BE A BOUNDARY SURVEY OF PROPERTY SHOWN.

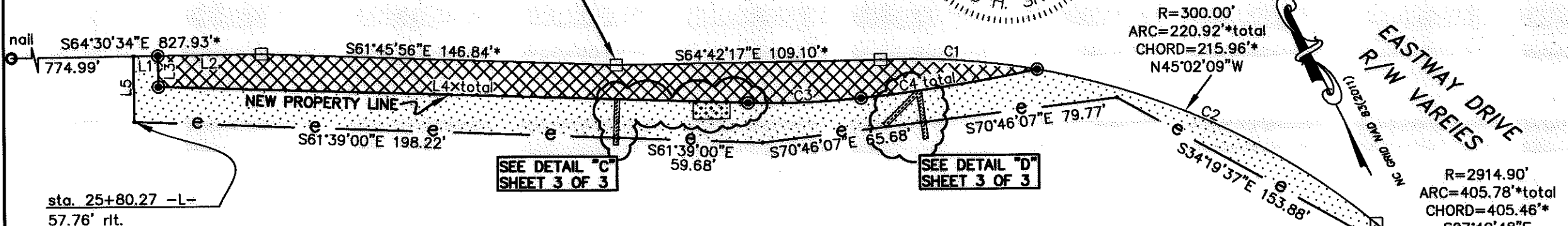


*David H. Snider* 2/24/14  
DAVID H. SNIDER, NC P.L.S. L-2942 DATE

EAST SUGAR CREEK ROAD

R/W VAREIES

OLD PROPERTY LINE



sta. 25+80.27 -L-  
57.76' rt.

SEE DETAIL "C"  
SHEET 3 OF 3

SEE DETAIL "D"  
SHEET 3 OF 3

## LEGEND

- CONCRETE MONUMENT
- IRON PIN FOUND
- #5 REBAR SET OR PK NAIL
- CALCULATED POINT
- LINES SURVEYED
- LINES NOT SURVEYED
- TEMPORARY CONSTRUCTION EASEMENT
- STORM DRAINAGE EASEMENT
- UTILITY EASEMENT
- TEMPORARY CONSTRUCTION EASEMENT
- UTILITY EASEMENT
- STORM DRAINAGE EASEMENT
- FEE SIMPLE OUTSIDE EXISTING R/W

Curve Table				
Curve #	Length	Radius	CHORD BEARING	CHORD
C1	64.93	300.00	N59°55'54"W	64.81
C2	155.99	300.00	N38°50'07"W	154.24
C3	46.86	340.50	S65°55'25"E	46.83
C4	73.64	707.50	S72°50'54"E	73.61
C5	35.29	2914.90	S24°02'19"E	35.29
C6	370.50	2914.90	S28°01'36"E	370.25

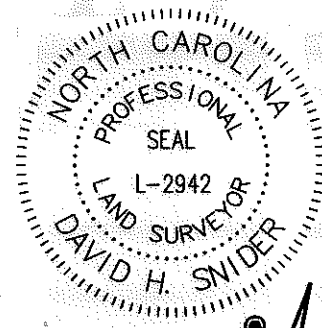
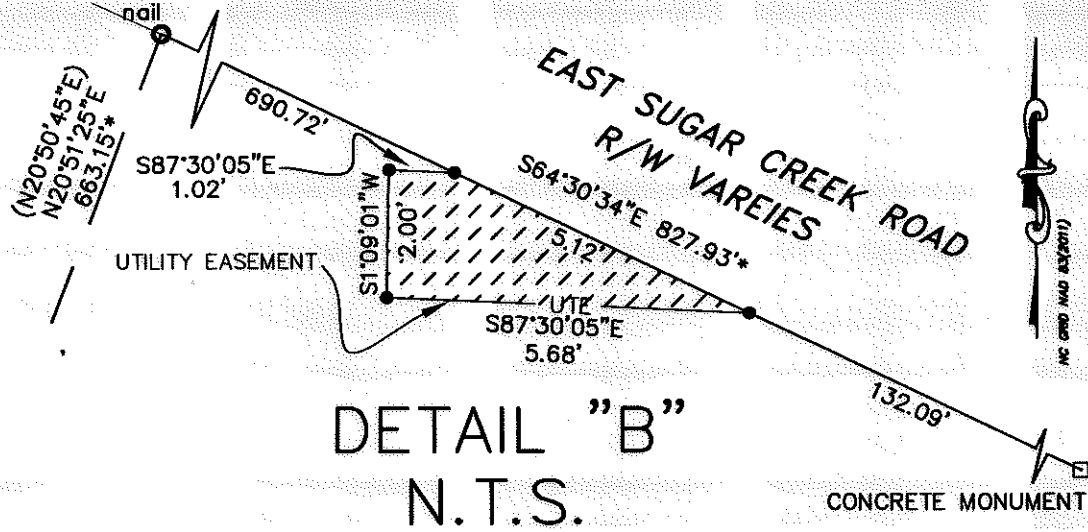
Line Table		
Line #	Length	Direction
L1	10.00	S64°30'34"E
L2	42.94	S64°30'34"E
L3	12.90	N25°29'26"E
L4	243.91	S61°58'51"E
L5	27.30	S25°29'26"W

PREPARED BY:  
CITY OF CHARLOTTE  
ENGINEERING & PROPERTY MANAGEMENT DEPARTMENT  
600 EAST FOURTH STREET  
CHARLOTTE, NC 28202  
704-336-2291

CHARLOTTE		
ENGINEERING & PROPERTY MANAGEMENT DEPARTMENT		
<b>REVISIONS</b> 1. added detail C&D note to sht. 1 of 3 and revised ownership name 2-05-14	<b>SUGAR CREEK RD./EASTWAY DR. INTERSECTION AND SIDEWALK IMPROVEMENTS</b>	JOB NO. 512-12-046
<b>SCALE</b> N.T.S.	<b>PROPERTY OF</b> MECKLENBURG COUNTY & THE CHARLOTTE-MECKLENBURG BOARD OF EDUCATION CHARLOTTE, MECKLENBURG CO., NC	212046
DRAWN BY G.F.	CHECKED BY DHS SURVEY SUPVR. <i>DHS</i>	SHEET 2 OF 3
DATE	K:\AutoCad\En_su-LD4\212046\PLATS\PLAT MAPS\PLAT-07	

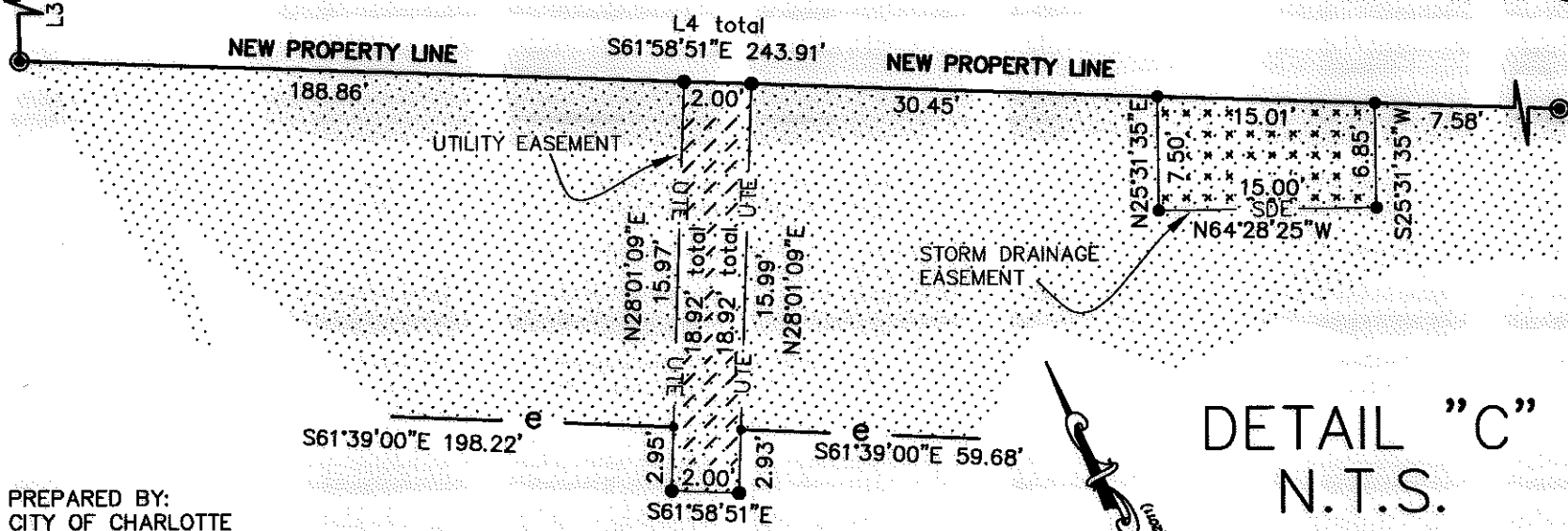
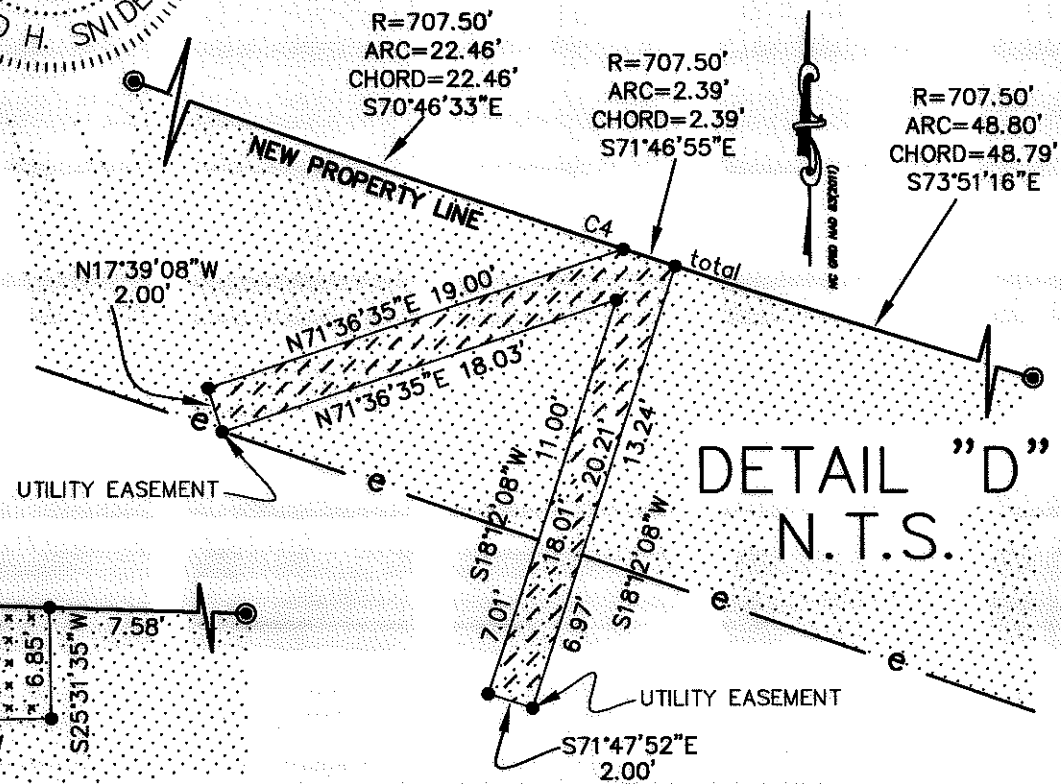
ACQUISITION BY DB 29126 PG 623

ACQUISITION BY DB 29124 PG 264



I, DAVID H. SNIDER, CERTIFY THAT THIS PLAT WAS PREPARED UNDER MY SUPERVISION AND THAT THE PLAT WAS PREPARED FOR THE PURPOSE OF ACQUISITION AND EASEMENTS ONLY, AND IS NOT INTENDED TO BE A BOUNDARY SURVEY OF PROPERTY SHOWN.

*David H. Snider* 2/24/14  
 DAVID H. SNIDER, NC P.L.S. L-2942 DATE



PREPARED BY:  
 CITY OF CHARLOTTE  
 ENGINEERING & PROPERTY MANAGEMENT DEPARTMENT  
 600 EAST FOURTH STREET  
 CHARLOTTE, NC 28202  
 704-336-2291

CHARLOTTE ENGINEERING & PROPERTY MANAGEMENT DEPARTMENT		
<b>REVISIONS</b> 1. added detail C&D note to sht. 1 of 3 and revised ownership name 2-05-14	<b>SUGAR CREEK RD./EASTWAY DR. INTERSECTION AND SIDEWALK IMPROVEMENTS</b>	<b>JOB NO.</b> 512-12-046
<b>SCALE</b> N.T.S.	<b>PROPERTY OF</b> MECKLENBURG COUNTY & THE CHARLOTTE-MECKLENBURG BOARD OF EDUCATION CHARLOTTE, MECKLENBURG CO., NC	<b>212046</b>  <b>SHEET</b> 3 <b>OF</b> 3
<b>DRAWN BY</b> G.F.	<b>CHECKED BY</b> DHS	<b>SURVEY SUPVR.</b> <i>DHS</i>
DATE _____		
K: \AutoCad\En_su-LD4\212046\PLATS\PLAT MAPS\PLAT-07		