

CURVE	DELTA	RADIUS	TANGENT	LENGTH	CHDBRG.	CHDDIST.
C1	2°52'04"	711.74'	17.82'	35.62'	S 1°25'46" E	35.62'
C2	3°15'32"	720.24'	20.49'	40.97'	S 1°37'31" E	40.96'
C3	4°12'08"	741.74'	27.21'	54.40'	N 2°05'49" W	54.39'
C4	0°10'04"	720.24'	1.06'	2.11'	S 0°42'14" E	2.11'

LINE	BEARING	DIST.
L19	S 0°00'17" W	20.00'
L20	N 89°59'44" W	14.50'
L21	N 0°00'17" E	20.00'
L22	S 89°59'44" E	14.50'

LINE	BEARING	DIST.
L8	S 0°00'17" W	2.00'
L9	S 83°29'05" W	17.61'
L10	N 0°00'17" E	2.00'
L11	N 83°29'05" E	17.61'

LINE	BEARING	DIST.
C4	SEE TABLE	
L12	S 81°44'57" W	16.64'
L13	N 25°41'24" W	2.38'
L14	N 82°19'48" E	17.63'

LINE	BEARING	DIST.
L15	S 57°02'17" W	3.29'
L16	N 83°03'19" W	12.57'
L17	N 21°35'33" E	2.38'
L18	S 82°16'50" E	14.49'
L23(TIE)	S 57°02'17" W	12.43'

LINE	BEARING	DIST.
L3	S 0°00'17" W	196.30'
C2	SEE TABLE	
L5	S 57°02'17" W	24.64'
C3	SEE TABLE	
L6	N 0°00'17" E	184.28'
L7	N 60°48'23" E	24.63'

DESC.	SQ. FT.	AC.
TOTAL PARCEL	90328	2.1
TOTAL AREA ACQ'D	2014	0.05
TOTAL PERM. UTIL. EASE. A	35	n/a
TOTAL PERM. UTIL. EASE. B	37	n/a
TOTAL PERM. UTIL. EASE. C	30	n/a
TOTAL PERM. DRAIN. EASE.	290	0.01
AREA REMAINING	87921	2.0
TOTAL TEMP. CONST. EASE.	5117	0.12

LINE	BEARING	DIST.
L1	S 0°00'17" W	201.05'
C1	SEE TABLE	
L2	S 57°02'17" W	9.81'
C2	SEE TABLE	
L3	N 0°00'17" E	196.30'
L4	N 60°48'23" E	9.74'

N/F K.F.C. NATIONAL MANAGEMENT CO.
D.B. 3526, PP. 356-57

N/F GREATER PROVIDENCE BAPTIST CHURCH TRUSTEES
D.B. 5683, PP. 659-61

N.C. GRID - N.A.D. 83
COMBINED SCALE FACTOR = .9998362

22

NCGS MON. "RANDY"
N 546702.660
E 1481061.021

I, Bradley Lloyd Hunter, certify that this plat was drawn under my supervision. This plat is a compilation of field and deed data and is NOT intended to be a boundary survey of the property shown.



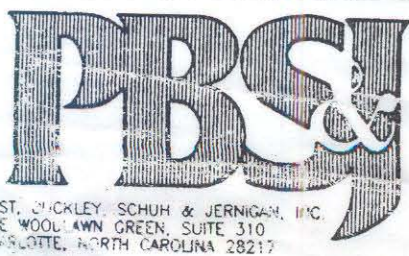
Bradley Lloyd Hunter
Bradley Lloyd Hunter, NCRLS # L-3565

REFERENCES:

- 1) NCGS MONUMENTS "RANDY" AND "TAYLOR".
- 2) CHARLOTTE ENG. DEPT. R/W PLANS FOR PROPOSED MILTON RD. IMPROVEMENTS PREP. BY PBS&J, CHARLOTTE, DATED 10\25\93. (PARCEL #22)
- 3) D.B. 4376, PP. 623-24.
- 4) D.B. 5683, PP. 659-61.
- 5) D.B. 6001, PP. 595-97.
- 6) D.B. 7077, PP. 463-65.

NOTES:

- 1) EIP DENOTES EXISTING IRON PIPE
- 2) IPS DENOTES IRON PIPE SET.
- 3) ALL DISTANCES ARE HORIZONTAL GROUND.
- 4) AREAS BY COORDINATE COMPUTATION.
- 5) (C) DENOTES COMPUTED.
- 6) (F) DENOTES FIELD MEASUREMENT.



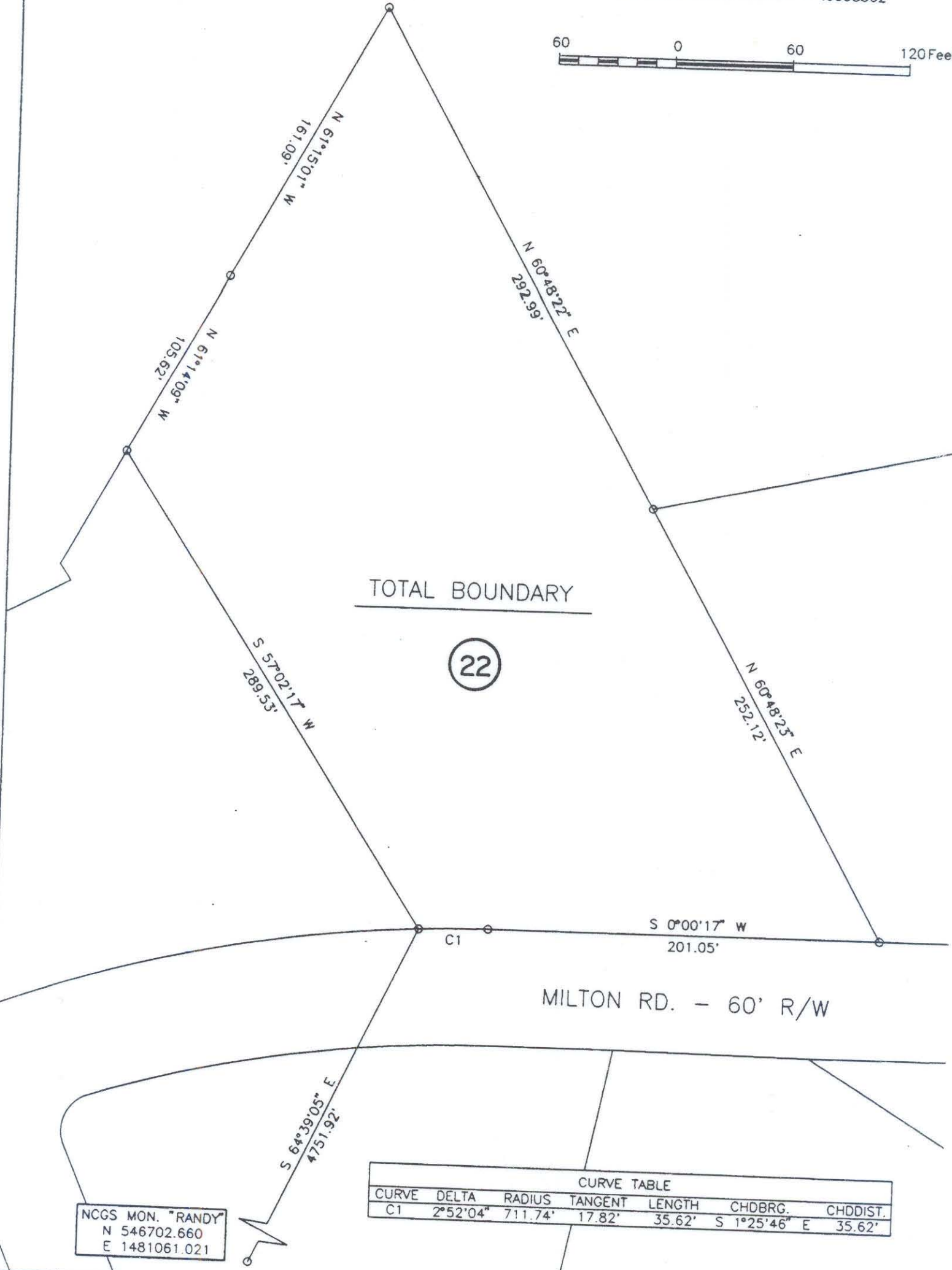
REVISIONS		PROPERTY OF	
MILTON ROAD IMPROVEMENTS		N/F GREATER PROVIDENCE BAPTIST CHURCH TRUSTEES	
PROJECT NO. 512-89-062		CHARLOTTE, N.C.	
SHEET 1		DATE: 10/25/93	

99-152-21



N.C. GRID - N.A.D. 83

COMBINED SCALE FACTOR = .9998362



TOTAL BOUNDARY

22

MILTON RD. - 60' R/W

CURVE TABLE						
CURVE	DELTA	RADIUS	TANGENT	LENGTH	CHDBRG.	CHDDIST.
C1	2°52'04"	711.74'	17.82'	35.62'	S 1°25'46" E	35.62'

NCGS MON. "RANDY"
 N 546702.660
 E 1481061.021



POST, BUCKLEY, SCHUH & JERNIGAN, INC.
 ONE WOODLAWN GREEN, SUITE 310
 CHARLOTTE, NORTH CAROLINA 28217



CHARLOTTE
 ENGINEERING DEPARTMENT

REVISIONS	MILTON ROAD IMPROVEMENTS PROJECT NO. 512-89-062	JOB NO. 29-049.15
	PROPERTY OF GREATER PROVIDENCE BAPTIST CHURCH TRUSTEES	DWG NO. MLT22.DWG
DRAWN BY BLH.	TAX MAP CODE 99-151-PARCEL 24	SHEET 2
CHECKED BY	CITY OF CHARLOTTE, MECKLENBURG COUNTY, N.C.	OF 2
SURVEY SUPV.	DATE 5/14/93	SCALE 1" = 60'

99-152-21