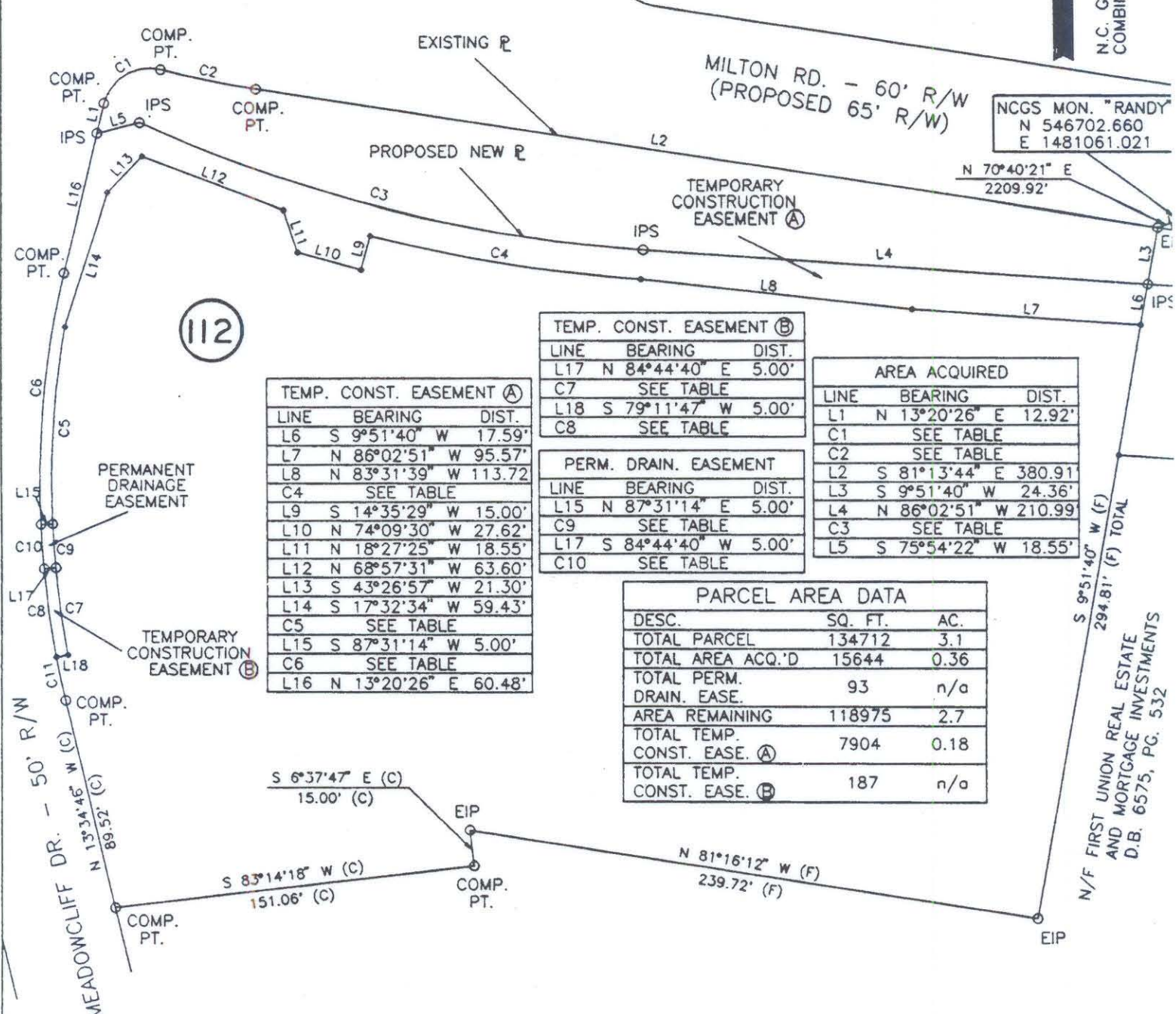


DESC.	DELTA	RADIUS	LENGTH	TANGENT	CHBRG	CHDIST
C1	87°37'01"	20.00'	30.58'	19.19'	N 59°31'51" E	27.69'
C2	5°33'38"	419.44'	40.71'	20.37'	S 78°25'31" E	40.69'
C3	20°40'04"	605.46'	218.40'	110.40'	N 75°42'49" W	217.22'
C4	10°38'20"	617.96'	114.74'	57.54'	N 80°43'41" W	114.58'
C5	12°29'32"	382.77'	83.46'	41.89'	S 3°46'03" W	83.29'
C6	15°49'13"	387.77'	107.07'	53.88'	N 6°05'53" E	106.73'
C7	5°32'53"	382.77'	37.06'	18.55'	S 8°01'45" E	37.05'
C8	5°32'51"	387.77'	37.54'	18.79'	N 8°01'45" W	37.53'
C9	2°46'37"	382.77'	18.55'	9.28'	S 3°52'01" E	18.55'
C10	2°46'36"	387.77'	18.79'	9.40'	N 3°52'01" W	18.79'
C11	2°46'31"	387.77'	18.78'	9.39'	N 12°11'28" W	18.78'



LINE	BEARING	DIST.
L6	S 9°51'40" W	17.59'
L7	N 86°02'51" W	95.57'
L8	N 83°31'39" W	113.72'
C4	SEE TABLE	
L9	S 14°35'29" W	15.00'
L10	N 74°09'30" W	27.62'
L11	N 18°27'25" W	18.55'
L12	N 68°57'31" W	63.60'
L13	S 43°26'57" W	21.30'
L14	S 17°32'34" W	59.43'
C5	SEE TABLE	
L15	S 87°31'14" W	5.00'
C6	SEE TABLE	
L16	N 13°20'26" E	60.48'

LINE	BEARING	DIST.
L17	N 84°44'40" E	5.00'
C7	SEE TABLE	
L18	S 79°11'47" W	5.00'
C8	SEE TABLE	

LINE	BEARING	DIST.
L15	N 87°31'14" E	5.00'
C9	SEE TABLE	
L17	S 84°44'40" W	5.00'
C10	SEE TABLE	

LINE	BEARING	DIST.
L1	N 13°20'26" E	12.92'
C1	SEE TABLE	
C2	SEE TABLE	
L2	S 81°13'44" E	380.91'
L3	S 9°51'40" W	24.36'
L4	N 86°02'51" W	210.99'
C3	SEE TABLE	
L5	S 75°54'22" W	18.55'

DESC.	SQ. FT.	AC.
TOTAL PARCEL	134712	3.1
TOTAL AREA ACQ'D	15644	0.36
TOTAL PERM. DRAIN. EASE.	93	n/a
AREA REMAINING	118975	2.7
TOTAL TEMP. CONST. EASE. (A)	7904	0.18
TOTAL TEMP. CONST. EASE. (B)	187	n/a

I, Bradley Lloyd Hunter, certify that this plat was drawn under my supervision. This plat is a compilation of field and deed data and is NOT intended to be a boundary survey of the property shown.



Bradley Lloyd Hunter
Bradley Lloyd Hunter, NCRLS # L-3565

- REFERENCES:
- 1) NCGS MONUMENTS "RANDY" AND "TAYLOR".
 - 2) CHARLOTTE ENG. DEPT. R/W RD. IMPROVEMENTS PREP. BY PBS&J, CHARLOTTE, DATED 10\25\93. (PARCEL #112)
 - 3) D.B. 6966 PP. 61-65.
- NOTES:
- 1) EIP DENOTES EXISTING IRON PIPE.
 - 2) IPS DENOTES IRON PIPE SET.
 - 3) ALL DISTANCES ARE HORIZONTAL PLANS FOR PROPOSED MILTON RD. GROUND.
 - 4) AREAS BY COORDINATE COMPUTATION.
 - 5) (C) DENOTES COMPUTED.
 - 6) (F) DENOTES FIELD MEASUREMENT.



 CHARLOTTE ENGINEERING DEPARTMENT		JOB NO. 28-048.15
MILTON ROAD IMPROVEMENTS PROJECT NO. 512-89-062		DWG NO. MIL112.DWG
PROPERTY OF ELM STREET A.M.E. ZION CHURCH TAX MAP CODE 99-211-PARCEL 2 CITY OF CHARLOTTE, MECKLENBURG COUNTY, N.C.		SHEET 1 OF 1
REVISIONS DRAWN BY: ELJL CHECKED BY: SURVEY SUPERV.	DATE 2/25/94 SCALE 1" = 60'	

99-211-02