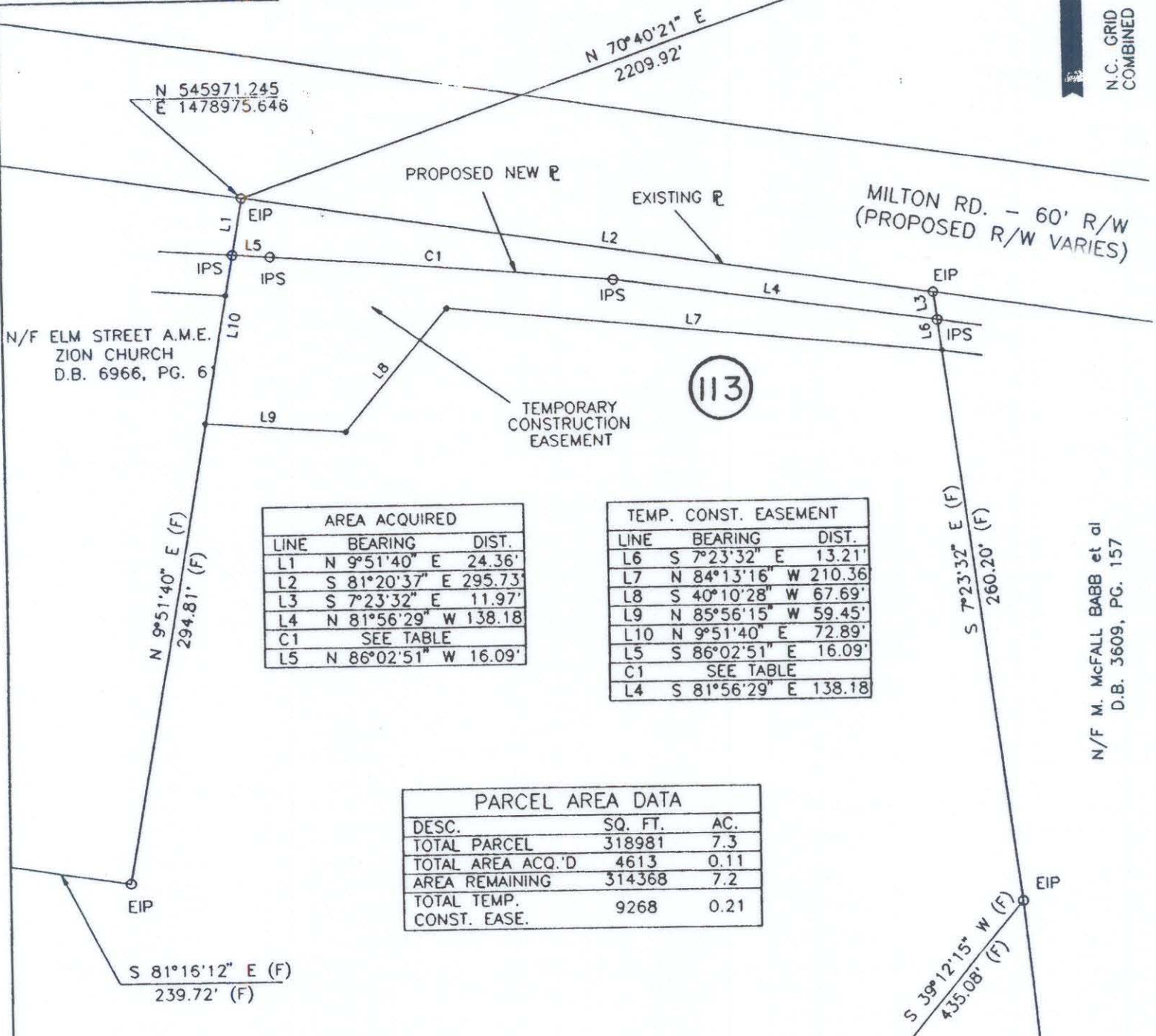


CURVE DATA TABLE						
DESC.	DELTA	RADIUS	LENGTH	TANGENT	CHBRG	CHDIST
C1	1°27'55"	5697.08'	145.69'	72.85'	N 85°18'54" W	145.69'

NCGS MON. "RANDY"
N 546702.660
E 1481061.021

N.C. GRID - N.A.D. 83
COMBINED SCALE FACTOR = .9998362



AREA ACQUIRED		
LINE	BEARING	DIST.
L1	N 9°51'40" E	24.36'
L2	S 81°20'37" E	295.73'
L3	S 7°23'32" E	11.97'
L4	N 81°56'29" W	138.18'
C1	SEE TABLE	
L5	N 86°02'51" W	16.09'

TEMP. CONST. EASEMENT		
LINE	BEARING	DIST.
L6	S 7°23'32" E	13.21'
L7	N 84°13'16" W	210.36'
L8	S 40°10'28" W	67.69'
L9	N 85°56'15" W	59.45'
L10	N 9°51'40" E	72.89'
L5	S 86°02'51" E	16.09'
C1	SEE TABLE	
L4	S 81°56'29" E	138.18'

PARCEL AREA DATA		
DESC.	SQ. FT.	AC.
TOTAL PARCEL	318981	7.3
TOTAL AREA ACQ.'D	4613	0.11
AREA REMAINING	314368	7.2
TOTAL TEMP. CONST. EASE.	9268	0.21

I, Bradley Lloyd Hunter, certify that this plat was drawn under my supervision. This plat is a compilation of field and deed data and is NOT intended to be a boundary survey of the property shown.

- REFERENCES:
- 1) NCGS MONUMENTS "RANDY" AND "TAYLOR".
 - 2) CHARLOTTE ENG. DEPT. R/W PLANS FOR PROPOSED MILTON RD. IMPROVEMENTS PREP. BY PBS&J, CHARLOTTE, DATED 10/25/93. (PARCEL #113)
 - 3) D.B. 6575, PG. 532.

- NOTES:
- 1) EIP DENOTES EXISTING IRON PIPE
 - 2) IPS DENOTES IRON PIPE SET.
 - 3) ALL DISTANCES ARE HORIZONTAL GROUND.
 - 4) AREAS BY COORDINATE COMPUTATION.
 - 5) (C) DENOTES COMPUTED.
 - 6) (F) DENOTES FIELD MEASUREMENT.



Bradley Lloyd Hunter
Bradley Lloyd Hunter, NCRLS # L-3565



POST, BUCKLEY, SCHUH & JERNIGAN, INC.
ONE WOODLAWN GREEN, SUITE 310

CHARLOTTE ENGINEERING DEPARTMENT		JOB NO.
MILTON ROAD IMPROVEMENTS		28-048.1
PROJECT NO. 512-89-062		DWG NO.
PROPERTY OF FIRST UNION REAL ESTATE EQUITY AND MORTGAGE INVESTMENTS		MLT113.00
TAX MAP CODE 99-211-PARCEL 8		SHEET
CITY OF CHARLOTTE, MECKLENBURG COUNTY, N.C.		1
DRAWN BY B.L.H.	CHECKED BY	OF

99-211-06